



# ***Sector Acceleration Action Plan***

## ***Creative Industries***

### ***February 2022***

#### ***Consultation Draft***

Version: V3.0  
Edit date : 20 February 2022  
Author: Economic Acceleration & Job Creation War Room  
Distribution: CONFIDENTIAL – RECIPIENTS ONLY

## Context and background

This sector acceleration action plan for the creative industries in Gauteng draws on work consolidated through series of focused CEO roundtables designed to enrich, expand and align with the efforts Gauteng Economic Acceleration and Jobs War Room (as detailed under Annexure A) held over the course of February 2022.

The war room functions as a fusion centre, clustering capacity from public and private sector around specific, high impact projects and programmes.

It deals with initiatives driving growth in Gauteng's 10 priority sectors, as well as the programmatic work on major industrial corridors (anchored by special economic zones) and the whole of government efforts to develop specific townships as multi-layer enterprise zones (Annexure A expands in some detail on the structure and focus areas of the war room).

**The 10 high growth sectors identified are:**

- **High Growth Sectors**
- **Energy, with a focus on new technologies and a diverse energy mix**
- **Transportation and logistics**
- **ICT and digital services with a focus on the gig economy**
- **Tourism and Hospitality**
- **Food, Beverages, Agro-processing and agribusiness**
- **Construction and Infrastructure**
- **Automotive, Aerospace and Defence**
- **Financial services**
- **Cultural and creative services**
- **Industrial Cannabis**

Within this context, the War Room action labs programme has been working directly with industry associations (and larger players in their own right) to agree specific, high impact points of action which can scale the sector in question, providing market expansion for firms of all sizes and creating high volumes of jobs in the process.

This work has surfaced the need for more focused sessions with industry leaders in each of the 10 priority sectors to both scale-up and focus the war room efforts under the action lab focus area, tying in the work of teams dealing with township economy initiatives, special economic zones, development of new urban nodes, the green economy and youth workforce development.

**These will form the basis of a clear compact between the GPG and each sector, focusing on major initiatives under each sector that can drive accelerated growth and livelihood generation across the Gauteng City Region.**

This sector acceleration action plan speaks specifically to Creative Industries.

All attendees of the February 2022 roundtable are henceforth invited to be standing members of the Creative Industries Action Lab , a reference group that will work directly with the war room to implement these commitments.

## **Actionables to accelerate Job Rich growth in the Creative Sector across the Gauteng City Region – 2022 through 2024 and beyond to be led by Gauteng Provincial Government (GPG) and the Creative Industries Action Lab**

### **With respect to the creative arts more broadly :**

GPG will work with the sector to create a hub accelerator network. This network will have, as one of its explicit goals, the aggregation of incubators – focused on early stage businesses – into a province wide accelerator capability, focused on delivering both services and content origination projects at scale, and will also act as a market making platform in this regard. To enable this it will have formal linkages with a range of distribution channels and established market making platforms.

Both hubs will be integrated, where feasible, into the new township cloud precincts that will be developed as part of the new township enterprise zones that are set to be deployed by GPG under the new township economic development act.

The Hub Accelerator Network will also be designed to act as a consolidation platform for relevant incentives managed by the Department of Trade, Industry and Competition in Gauteng.

The Creative Sector Action Lab team at the war-room must complete the design for the Hub Accelerator Network by end March 2022, including a detailed deployment project plan for the 12 months following.

1. The Hub Accelerator Network will also act as consolidation point for portfolio financing approach linked to township enterprise partnership fund (See detail under war-room summary under Annexure A) and similar vehicles. This focuses on wholesale funding distributed to intermediaries that run loans to portfolios of small enterprises. The products to be made available through the hub network will include bridging finance for project development linked to a project marketplace that the hub/ accelerator network will convene and enable.

These features will be part of the design the Creative Sector Action lab team will present by end March 2022.

2. The GPG will work with the action lab to establish and deploy a retail fashion incubator linked to hangar-space at major mass-market retailers, connecting in design capabilities and support programmes across a range of partners and integrating these into a common market access platform.

The creative sector action lab team will present the roadmap for this intervention by end April 2022.

3. The GPG commits to work with the Creative Industries Action Lab to consolidate and present well thought through , investment-promoting and progressively empowering positions on any legislation passing through the National Council of Provinces, including but not limited to any legislation with impact on intellectual property and the ownership/ tradability thereof.

The Action Lab commits to author a collectively endorsed lobbying position paper on all such legislation before parliament as at the time of writing by end of May 2022.

With respect specifically to Gaming and game-linked animation

1. Gaming and animation hubs will be explicitly included in the Hub Accelerator Network and prioritised for access to township cloud zones, including hot desking capabilities for game development services companies and content origination companies.
2. The Hub Accelerator Network will include a specific consolidation of funding and effort to establish a skills programme to develop middle and senior level gaming professionals as part of its accelerator function .
3. In order to support the skills transfer requirements for (2), GPG and the Action lab will lobby for a special work visa category for globally experienced gaming professionals to locate in South Africa, with conditions tying visa status to being part of an ongoing training and skills transfer programme (for which the Hub Accelerator Network will provide a channel of compliance).

The design of the proposals to this effect must be completed by May 2022.

4. In addition to the efforts coordinated through the Hub Accelerator Network the Creative Industries Action Lab will develop and deploy an economic and policy framework targeting the location of at least one internationally trading gaming studio in Gauteng (potentially as part of the new Lanseria Smart City initiative). As part of this framework. This should include a profit share/ ESD arrangement cross subsidizing the incubator to accelerator pathway for gaming incubators who form part of the Hub Accelerator Network.

The target date for concluding an investment deal with at least 1 major studio will be April 2023.

The action lab will produce a roadmap to this target by April 2022.

With respect to film sector specifically

1. GPG will support current proposals to deploy a film studio complex attached to the Cradle of Humankind servicing the film industry globally and directly integrated into the Lanseria Smart City initiative.

The GPG will target conclusion of a Memorandum of Understanding with all involved parties to support this project by end of February 2022. The initial phases of the studio complex must be established by March 2024.

2. Building on the capabilities of the Gauteng Film Commission, the GPG will deploy a Gauteng film enabling office network with regional desks linked to key state institutions (including those controlling permitting), stacking and streamlining access to incentives for film projects. This will include a structured working channel with DTIC to deploy these incentives and active partnerships with both international film service networks and streaming platforms with their own content creation arms.

The roadmap for the establishment of this film enabling office and its regional networks must be complete by March 2022.

3. Linked to the film enabling office the GPG will work with the action lab to design a Gauteng Film Academy programme, networking together existing institutions and creating funding and accreditation linkages with the relevant SETAs.

The film academy programme design will be included in the roadmap for the film enabling office network.

With respect specifically to recorded music :

1. The GPG will explicitly include hubs providing support to black-owned/ emerging record companies in the Hub Accelerator network.
2. The GPG will ensure that the concerns of the music recording industry with regards to enabling widespread commercial returns on royalty bearing properties are included in the lobbying position papers prepared for the NCOP.



## **Annexure A : The Gauteng Economic Acceleration and Job Creation War-Room**

### **Context**

This annexure summarises the configuration and programmatic content underpinning the new economic and jobs war-room led by the Gauteng Department for Economic Development and its agencies, in collaboration with its sister department, the Gauteng Department of Agriculture and Rural Development.

At the time of writing the war room was in the process of expanding to manage its mandate on a whole-of-government basis within the boundaries of Gauteng Province.

This section provides a summary of the operational configuration of the war-room, while Annexure A provides more extensive content on the wider set of action plans under the GPG Economic Acceleration programmes the war-room is driving.

The full set of economic acceleration programmes can be summarised as follows :

- *Bringing opportunity to the many and confronting inequality at the spatial level through **the Township Economic Revitalization Programme / new deal for township economies** (now expanded and amplified through the township rebuilding programme post July 2021 unrest)*
- *Reindustrializing Gauteng for the 21<sup>st</sup> century through **Multi-tier SEZ & High Growth Sector Programme***
- *Systematically confronting youth economic exclusion through the **Tshepo 1Million & Youth workforce development programme***
- *Creating the enabling conditions for a high-growth economy through our **Catalytic Infrastructure programme***

The Economic Acceleration and Job Creation War-Room , as explained immediately below, is an intergovernmental programme management office tasked with driving – and institutionalizing – the major high impact initiatives that underpin these acceleration programmes.

## *The Gauteng Economy & Jobs War Room*

The war room is run using 7 functional task teams. Their key project focal points are summarised below :



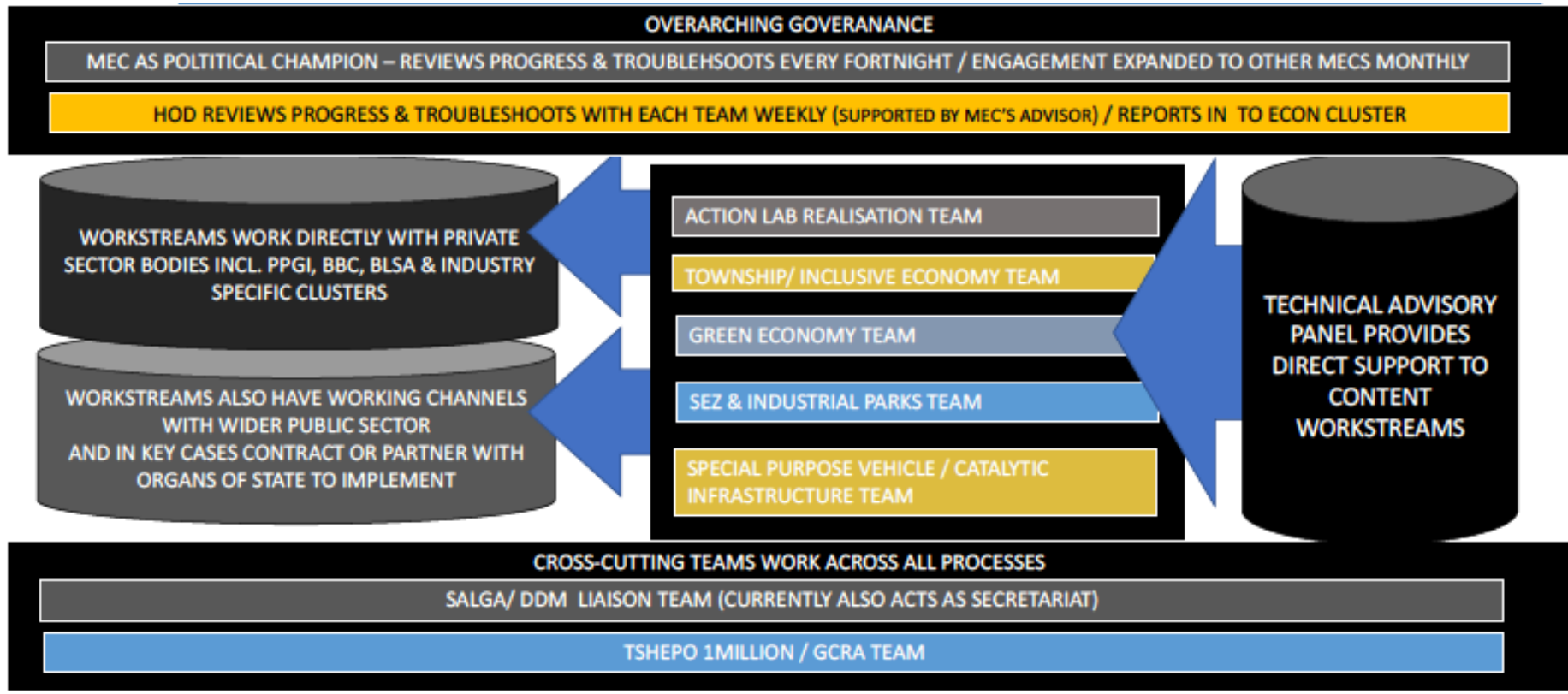
<p><b>TOWNSHIP ECONOMY TEAM</b></p>	<ul style="list-style-type: none"> <li>• <b>Support implementation of the township economic development act including:</b> <ul style="list-style-type: none"> <li>• <b>Supporting implementation of draft model bylaws in partnership with the districts</b></li> <li>• Programmatically Supporting implementation of <b>GEP-IDC township economy partnership fund (TEPF), including partnership Support initiatives</b> linked to backyard real estate/ township high streets and township wholesale &amp; retail development (cuts across high growth sectors)</li> <li>• <b>Taxi</b> economy initiative, including taxi industrialisation partnership (Toyota) and TEPF taxi fund (explicit participation opportunity for DBSA)</li> <li>• Hotdesk clusters and networks linked to Ekasi labs</li> </ul> </li> </ul>
<p><b>SEZ &amp; INDUSTRIAL PARKS TEAM</b></p>	<ul style="list-style-type: none"> <li>• Support establishment of GIDZ as properly capacitated SEZ / industrial parks oversight entity (including industrial parks portfolio initiative-links to TER team)</li> <li>• Coordinate implementation of Vaal SEZ &amp; N12 SEZ , including regional development agency role</li> <li>• Coordinate expansion of OR Tambo SEZ</li> <li>• Support refinement and deployment of portfolio programme for township industrial estates linking them as supplier clusters to high growth sectors</li> <li>• Dryports partnership with Transnet &amp; Support Gauteng participation in Gauteng-Eastern Cape High Capacity Corridor Strategic Integrated Project (including wagon production/ steel sourcing)</li> <li>•</li> </ul>

<b>ACTION LAB REALISATION TEAM</b>	<ul style="list-style-type: none"> <li>• <b>Implementation of Action lab deliverables for :</b> <ul style="list-style-type: none"> <li>• Broadband (incl. GBN commercialisation)</li> <li>• Global Business Services</li> <li>• Construction (incl. steel)</li> </ul> </li> <li>•</li> <li>• <b>Coordination of action labs and deliverable implementation for:</b> <ul style="list-style-type: none"> <li>• Energy</li> <li>• Logistics &amp; Transportation</li> <li>• Agriprocessing &amp; Agribusiness</li> <li>• Cannabis</li> </ul> </li> <li>•</li> </ul>
<b>GREEN ECONOMY TEAM</b>	<ul style="list-style-type: none"> <li>• <b>Green H2 partnership with SASOL</b> (large scale embedded generation grids, Green H2 IPPs, H2 fuel cell conversion for bus fleets and strategic localisation of component manufacturing)</li> <li>• <b>Green H2 production partnership with Sibanye Stillwater</b></li> <li>• <b>AMD reprocessing partnership</b> , working with DBSA &amp; WRI</li> <li>• <b>Waste economy programme:</b> landfill compliance twinned with waste economy programme plus partnership fund embedding EPR resources</li> </ul>
<b>SPECIAL PURPOSE VEHICLE / CATALYTIC INFRASTRUCTURE TEAM</b>	<ul style="list-style-type: none"> <li>• Support full deployment of Lanseria Smart City initiative , including full rollout of SPVs</li> <li>• Support expansion of the Lanseria SPV model for bulk services to the Vaal and N12 corridor (including area-based masterplanning)</li> <li>• Coordinates with SEZ team on regional industrial mobilization</li> <li>• Coordinates with Green economy team on integrating green utilities into the new nodes</li> <li>•</li> </ul>
<b>SALGA/ DDM LIAISON TEAM</b>	<ul style="list-style-type: none"> <li>• <b>WORKS WITH ALL TEAMS TO ALIGN EFFORTS WITH MUNICIPALITIES VIA DDM STRUCTURES</b></li> </ul>

<p><b>TSHEPO 1MILLION / GCRA TEAM</b></p>	<ul style="list-style-type: none"> <li>•</li> <li>• <b>COORDINATES WORKFORCE DEVELOPMENT CHANNELS FOR HIGH GROWTH SECTORS</b></li> <li>• <b>WORKS WITH ALL TEAMS TO ALIGN EMPLOYMENT AND SELF-EMPLOYMENT PATHWAYS FOR YOUNG PEOPLE</b></li> <li>•</li> </ul>
---	--

The functional design of the war room is summarised by figure 1.1 on the page following.

**Figure 1.1 – Economic and Jobs war room functional design**



*A summary of key war room operational focal points follows*

## **War room operational focal points**

### **1. Accelerating the New Deal for Township Economies**

- **The Township Development Bill – which is designed to transform our townships into economically diversified, job-rich spaces filled with hundreds of 1000's of growth SMMEs has been gazetted by the Gauteng Provincial Legislature, with final comments due 30-08-2021.**
- **We are now moving forward with that Legislation, including the draft model bylaw that is one of the proposed act's main policy instruments.**

**The Township Economic Development act as drafted, based on approved policy, is designed to bring opportunity to the many and confront inequality at the spatial level by :**

- **Changing how townships are regulated and governed** to transform them into zones of widespread, job-creating commercial activity . This is to be done through new draft standard bylaws and streamlined regulations
- **Setting up better procurement rules and programmatic support which allow government and its main contractors to buy from large groups of township-based firms**, with systems linking them so they can supply if they were one large firm – this includes Manufacturing cluster pilots
- **Creating a permanent township funding mandate which establishes a township growth SMME fund** to provide wholesale, blended finance to intermediaries that can de-risk lending to township based firms, including community banks.
- **Providing legal framing for supporting the Taxi Economy Initiatives**, including setting up investment vehicles to commercialize taxi ranks and other taxi economy nodes using blended finance and zoning overlays to incentivize development around ranks, transforming them into township CBD nodes.
- **Providing legal framing for rapidly releasing publicly owned land** for best, most developmental commercial use in township areas
- **Providing legal framing for upgrading township backyard real estate** – the fastest growing form of rental in Gauteng which now accounts for how 4 million citizens of the province live. This includes provisions to establish township commercial precincts/ high streets in areas targeted for precinct-level backyard real estate upgrades

**This instrument will create a new economic geography – the township enterprise zone.**

The zones are focused on moving from a stifling legalistic mode of management of economic activities to an enabling approach which combines everything government can do and “Stacks” benefits to businesses and workers in the zones .

**The shift entails:**

- 1. Cutting red tape in the zones through mandating legislation, Model Standard By-law(s) and regulations;**

2. Targeted tax incentives (can also be run as incentive grant to businesses)
3. Targeted funding (using township enterprise partnership fund)
4. Targeted procurement and pipeline development
5. Clear operations and management roles defined,
6. A monitoring and evaluation framework; and
7. Progressive view to support decentralised management and data gathering/monitoring about less formal economic activity in Gauteng.

The following parameters define the areas that will be designated as township enterprise zones

1. Historical non-white "townships" (as noted in 1996 census including R293 townships, etc.)
2. An area within and abutting Gauteng Province sharing a set of distinguishing characteristics, namely:
  - **Structurally disadvantaged areas** (historical, evident and emerging);
  - Area serving as **predominantly a dormitory town and/or labour reserve** including informal settlements;
  - Areas serving as consumer retail market and/or **destinations with limited economic diversification**
  - Areas serving as consumer retail market and/or **destination with limited recognition of economic potential existing in the area**

**This generates an alphabetized list of proposed township enterprise zones as follows:**

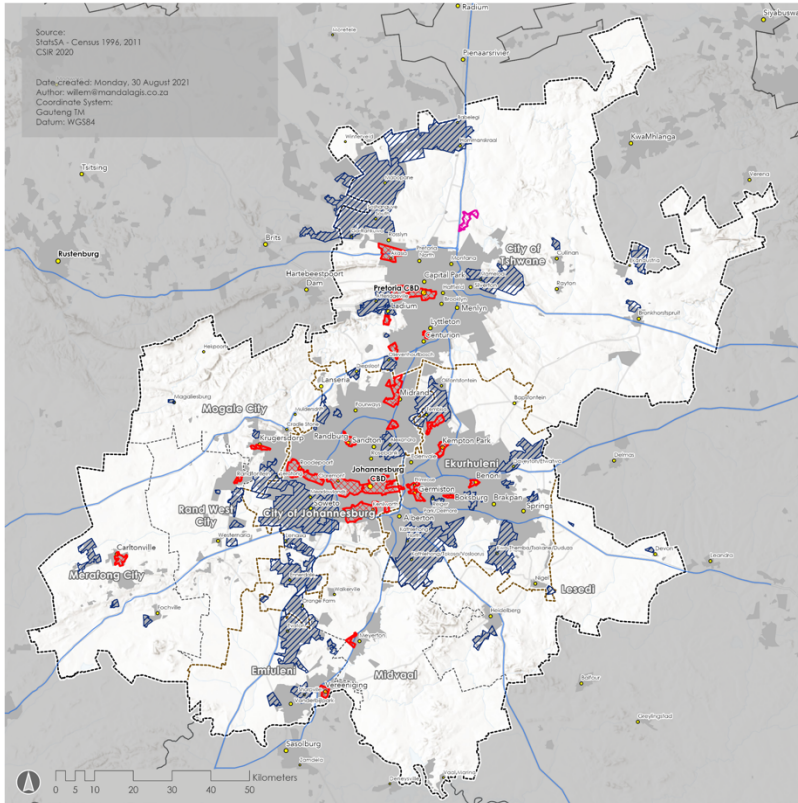
Actonville/Dalpark
Alexandra
Atteridgeville/Lotus Gardens
Bakerton/Paynville
Bekkersdal
Benoni CBD
Bloubostrand/Kaya Sand
Boksburg CBD
Bophelong
Carletonville CBD
Cerutiville
Cosmo City
Daveyton/Etwatwa
Devon/Impumelelo
Diepsloot
Ekgangala
Ennerdale/ Lenasia South/Lawley/Vlakfontein
Evaton/Sebokeng/Orage Farm

Finsbury
Germiston CBD
Greater Soweto
Hammanskraal/Temba
Johannseburg CBD
Kagiso/Tshepisong/Azaadville
Katlehong/Vosloorus
Kempton Park CBD
Khutshong
Kingsway/Linelani Village
Kokosi/Fochville
Krugersdorp CBD
Kwazenzele
Langaville/Stakane
Lenasia/Thembalihle/Lehae
Magaliesburg/Gamohale
Mamelodi/Eersterust
Mayfair/Riverlea/Bosmont
Meyerton Park
Midrand
Mooiplaats/Sunderland Ridge Informal
Munsieville
Olievenhoutbosch
Poortjie
Pretoria CBD
Randfontein CBD
Ransburg CBD
Ratanda
Refilwe
Reiger Park
Rethabiseng
Roodepoort
Rosettenville/Mondeor/Crown Gardens
Roshnee/Rust ter Vaal
Sharpville/Boipatong
Simunye
Soshanguve/Ga-Rankuwa
Sunderland Ridge Informal
Tembisa
The Orchards
Toekomsrus/Mohlakeng/Zenzele
Vereeniging CBD
Wedela
Wheelers Farm/Sweetwaters

Zandspruit Informal

Zithobeni

The following spatial map provides a province wide visualisation of where the zones are likely to be declared

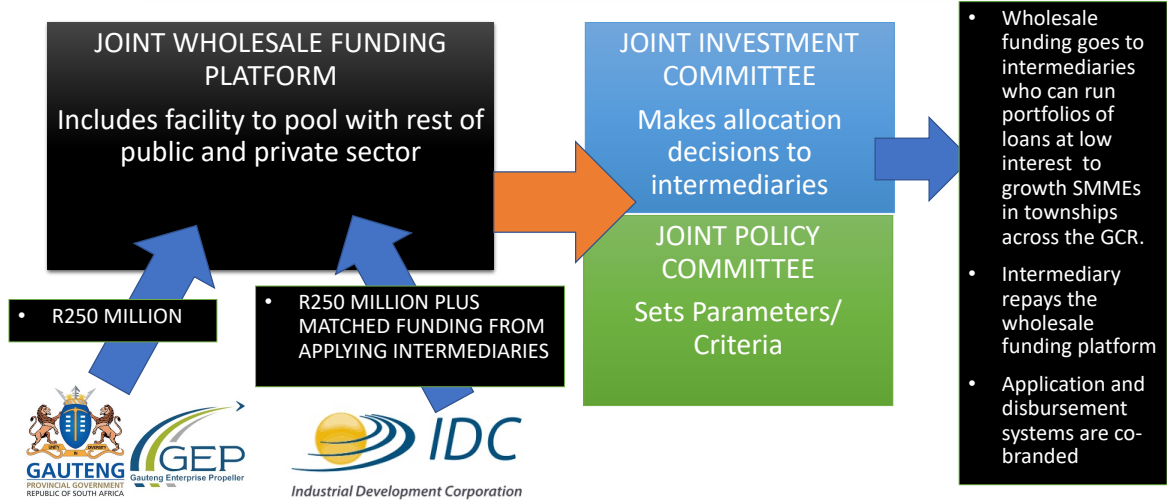


## 2. Scaling up the Township Economy Partnership Fund (GPG-IDC)

The infographic below summarises the credit pooling platform the Gauteng Provincial Government has developed with IDC, providing wholesale capital to intermediaries who can drive clusters of growth SMMEs in township areas (focusing on the new township enterprise zones).



**GCR TOWNSHIP ECONOMY PARTNERSHIP FUND**



**3. Driving implementation of the broader Gauteng Economic Acceleration Agenda (as laid out under GGT2030)**

Gauteng Provincial Government continues to facilitate and promote economic growth and development in the province, with a targeted commitment to focus on enhancing inclusivity of the economy, whilst improving its competitiveness. Central to this, is the ability to create an enabling environment for jobs to be created in the province by making interventions in 10 high growth sectors.

This is the driving force behind the Transformation, Modernization and Re-industrialization programme first outlined under the 5<sup>th</sup> Gauteng Provincial government, now further elaborated in the GGT2030 plan of action which has been adopted as the guiding vision of the 6<sup>th</sup> administration.

GGT2030 not only sets down specific and bold actions to empower Women; Youth ; SMMEs; Black businesses; It further recognizes that government must aggregate its efforts across spheres as well as with the private and non-profit sectors in pursuit of specific goals, including:

- Driving spatial and economic transformation, particularly with respect to townships.
- Creating employment for the many & facilitating an employment to empowerment pathway for all classes of disadvantaged citizens

- Coordinating industrialization initiatives so they are geared towards products and services required by the 10 high growth sectors and thus are sustainably financeable.

Provided the programmes and initiatives outlined under the economy, jobs and infrastructure component of GGT2030 are fully implemented, the impact in Gauteng within a decade has been modelled as follows :

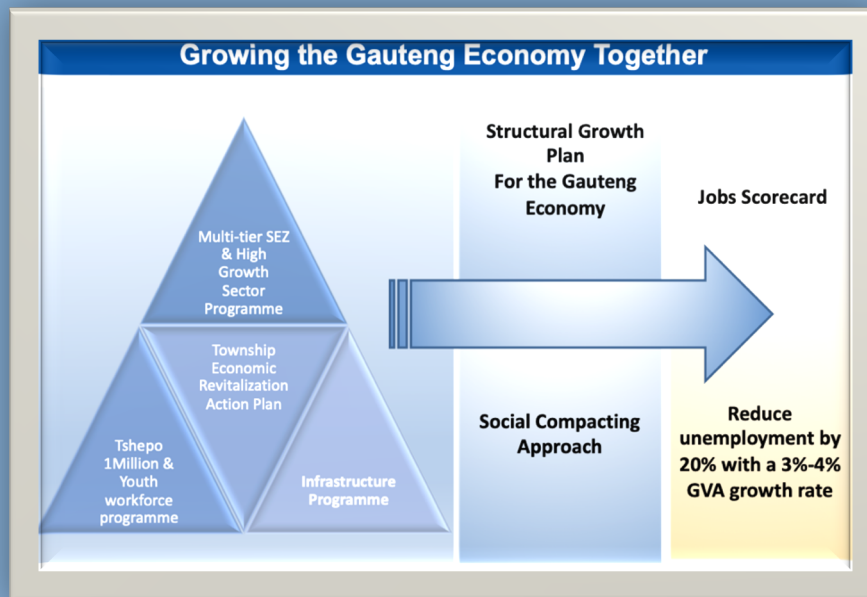
- The size of the economy is expected to more than double over the next 11 years, from its current size of about R1 trillion to a little above R2 trillion, at 2010 prices
- Unemployment rate will be reduced by almost two-thirds from the 36% (Mild COVID-19 scenario) and 42% (Severe Scenario) in 2020 to 13% by 2030
- Per Capita GDP is expected to increase by 70% in real terms from about R 68, 000 currently to about R 115, 000 in 2030

The mechanisms to achieve these objectives under the **Economy, Jobs & Infrastructure** commitments at the core of GGT2030 are summarised under the apex programme approach unpacked by Figure 1 on the following page.

The implementation of these initiatives is being accelerated through a multi-disciplinary war-room, the operational structure of which is described and summarised under the opening section of this document .

**Figure 1: Summary of economic acceleration Apex programmes**

*Gauteng Provincial Government continues to facilitate and promote economic growth and development in the province, with a targeted commitment to focus on enhancing inclusivity of the economy, whilst improving its competitiveness. Central to this, is the ability to create an enabling environment for jobs to be created in the province by making interventions in the key economic sectors. These efforts have been organised as a set of apex programmes focused on economic acceleration and investment fast-tracking*



**The Apex Economic Acceleration Programmes are :**

- Reindustrializing Gauteng for the 21<sup>st</sup> century through **Multi-tier SEZ & High Growth Sector Programme**
- Bring opportunity to the many and confront inequality at the spatial level through **the Township Economic Revitalization Programme**
- Systematically confront youth economic exclusion through the **Tshepo 1Million & Youth workforce development programme**
- Creating the enabling conditions for a high-growth economy through our **Catalytic Infrastructure programme**
- **Restructuring the Gauteng economy for long term growth by:**
  - Modernizing network industries
  - Lowering barriers to entry and addressing distorted patterns of ownership
  - Prioritizing labour intensive growth
  - Focused and flexible industrial policy
- Engaging the private sector and social partners to join the effort through **structured Social Compacting**

**These programmes are linked to Jobs scorecard for the 6<sup>th</sup> Administration**

**Table 3.1 : 10 targeted economic high growth sectors strategically identified by GGT2030 matrixed to Departmental and Agency roles**

Initiatives supporting acceleration of the 10 high-growth sectors identified by GGT2030 include the transversal role of linking investment facilitation to value-chain transformation and SMME empowerment through **active** enterprise and supplier development. The special economic zone network and the associated industrial park network play a significant role in this set of objectives.

<ul style="list-style-type: none"> <li>High Growth Sectors</li> </ul>	<ul style="list-style-type: none"> <li>Lead within Gauteng Provincial Government</li> </ul>	<ul style="list-style-type: none"> <li>Key actions/ initiatives to be driven under the Economic Apex programmes</li> </ul>
<ul style="list-style-type: none"> <li>Energy, with a focus on new technologies and a diverse energy mix</li> </ul>	<ul style="list-style-type: none"> <li>The energy security office is being transitioned to report into Office of the Premier (OOP), but is multi-disciplinary</li> </ul>	<ul style="list-style-type: none"> <li>SEZ network integration into bio-energy.</li> <li>Lead on Green Industrialisation and Green Economy policy and programmes, including Green Energy</li> <li>Facilitating Sector transformation, including supplier and enterprise development for value chain inclusion</li> </ul>
<ul style="list-style-type: none"> <li>Transportation and logistics</li> </ul>	<ul style="list-style-type: none"> <li>Department of Provincial Roads and Transport (GDPRT)</li> </ul>	<ul style="list-style-type: none"> <li>SEZ network integration into logistics networks (including Gauteng-EC High-Capacity Rail Corridor)</li> <li>Facilitating Sector transformation, including supplier and enterprise development for value chain inclusion</li> </ul>

<ul style="list-style-type: none"> <li>• <b>ICT and digital services with a focus on the gig economy</b></li> </ul>	<ul style="list-style-type: none"> <li>• Department of E-Government (E-Gov) leads on 4IR transformation of Government and Gauteng Broadband Network (GBN) commercialisation</li> <li>•</li> <li>• DED Group Leads on Global Business Services via action lab process</li> <li>•</li> </ul>	<ul style="list-style-type: none"> <li>• Digital economy support and enabling through investor facilitation as well as enterprise and supplier development</li> <li>• Co-ordination of joint actions with industry to grow the Global Business Services sector via action lab process</li> <li>•</li> </ul>
<ul style="list-style-type: none"> <li>• <b>Tourism and Hospitality</b></li> </ul>	<ul style="list-style-type: none"> <li>• DED Group via GTA</li> </ul>	<ul style="list-style-type: none"> <li>• Co-ordination of joint actions with industry to grow the tourism sector</li> <li>• Investment facilitation into the tourism sector</li> <li>• Facilitating Sector transformation, including supplier and enterprise development for value chain inclusion</li> <li>•</li> </ul>
<ul style="list-style-type: none"> <li>• <b>Food, Beverages, Agro-processing and agribusiness</b></li> </ul>	<ul style="list-style-type: none"> <li>• Department of Agriculture and Rural Development (GDARD)</li> </ul>	<ul style="list-style-type: none"> <li>• Co-ordination of joint actions with industry to grow the food, beverages and agro-processing sectors</li> <li>• Investment facilitation into these sectors , including through the SEZ network</li> <li>• Facilitating Sector transformation, including supplier and enterprise development for value chain inclusion</li> </ul>

<ul style="list-style-type: none"> <li>• <b>Construction and Infrastructure</b></li> </ul>	<ul style="list-style-type: none"> <li>• Department of Infrastructure Development (DID)</li> <li>•</li> </ul>	<ul style="list-style-type: none"> <li>• Investor facilitation into Special Purpose Vehicles enabling blended finance of catalytic infrastructure</li> <li>• Facilitating sector transformation through enterprise/ supplier development and workforce development initiatives (including community contracting models)</li> <li>•</li> </ul>
<ul style="list-style-type: none"> <li>• <b>Automotive, Aerospace and Defence</b></li> </ul>	<ul style="list-style-type: none"> <li>• DED Group via GGDA Group</li> </ul>	<ul style="list-style-type: none"> <li>• Co-ordination of joint actions with industry to grow the automotive, industry and defence sectors</li> <li>• Investment facilitation into these sectors , including through the SEZ network</li> <li>• Facilitating Sector transformation, including supplier and enterprise development for value chain inclusion</li> </ul>
<ul style="list-style-type: none"> <li>• <b>Financial services</b></li> </ul>	<ul style="list-style-type: none"> <li>• DED Group with respect to deepening and widening the sector in Gauteng</li> <li>•</li> </ul>	<ul style="list-style-type: none"> <li>• Expanding financing access to township based and under-banked firms.</li> <li>• Facilitating sector transformation through enterprise/ supplier development and workforce development initiatives</li> </ul>

<ul style="list-style-type: none"> <li>• <b>Cultural and creative services</b></li> </ul>	<ul style="list-style-type: none"> <li>• Department of Sports, Recreation, Arts &amp; Culture (SRAC)</li> </ul>	<ul style="list-style-type: none"> <li>• Industrialisation of key creative economy sectors with high-growth path potential, including animation and gaming production.</li> <li>• Facilitating Sector transformation, including supplier and enterprise development for value chain inclusion (with a specific focus on digital production, gaming development and animation)</li> <li>•</li> </ul>
<ul style="list-style-type: none"> <li>• <b>Industrial Cannabis</b></li> </ul>	<ul style="list-style-type: none"> <li>• Department of Agriculture and Rural Development (GDARD)</li> </ul>	<ul style="list-style-type: none"> <li>• Work with relevant authorities to develop a regulatory ‘sandbox’ to coherently regulate the sector in Gauteng.</li> <li>• Co-ordination of joint actions with industry to grow the industrial cannabis sector</li> <li>• Investment facilitation into this sector , including through the SEZ network</li> <li>• Facilitating black industrialist participation in the sector, including supplier and enterprise development for value chain inclusion</li> </ul>
<ul style="list-style-type: none"> <li>•</li> </ul>	<ul style="list-style-type: none"> <li>•</li> </ul>	<ul style="list-style-type: none"> <li>•</li> </ul>

**Table 3.2 : High Growth Sector Project Matrix**

	INDUSTRIAL SECTOR	SPECIAL ECONOMIC ZONES	NEW ECONOMIC NODES	BROADER INDUSTRIAL STIMULUS	MAJOR LIGHTHOUSE/ CATALYTIC PROJECTS			KEY POLICY INSTRUMENTS
					WITHIN 2022-23 FINANCIAL YEAR	WITHIN 6 <sup>TH</sup> ADMINISTRATION	EXPANSION BY 2030	
1	<p><b>Energy, with a focus on new technologies and a diverse energy mix</b></p>	<p>Deployment of Vaal SEZ as an enabler for Green H2 micro-grids, deployed by black industrialists</p> <p>Bio-energy, battery storage manufacturing &amp; Industrial Hydrogen to be included within N12 corridor SEZ</p> <p>H2 fuel cell manufacturing as part of OR Tamb SEZ.</p> <p>N12 Corridor SEZ includes Green H2 focus</p> <p>Lanseria Hi-tech SEZ will include Green technologies as a targeted cluster</p> <p>Green energy deployment across all SEZ facilities and their associated industrial belts/ clusters, including 100% renewable energy investment incentive</p>	<p>Inclusion of green energy systems – including embedded generation and micro-grids – within the master-plans for new economic nodes (Lanseria, Vaal, N12 corridor) to be financed by bulk infrastructure investment schemes. This includes provision for green short range transport systems (such as renewably powered trams and light rail for transit within nodes and connecting to multi-modal facilities)</p> <p>Integration of green technology systems into design of human settlements mega projects.</p> <p>Equipping refurbished township industrial estates as supplier parks for energy value chains</p>	<p>Microgrid rollout to major industrial sites using green H2 and other leading technologies</p> <p>Support green energy microgrids in township enterprise zones</p> <p>Partnership public transport (BRT bus manufacturing) to drive green fuel adoption.</p> <p>Syndication of green funding channels via :            (1) linkage to Township Economy Partnership Fund via a dedicated channel and            (2) deploying a green challenge umbrella fund for the GCR</p> <p>Waste to energy as part of broader waste economy programme tied to enforcement of landfill standards and pooled waste</p>	<p>Consolidate and finalize Partnerships to deploy green industrial power across GCR using locally produced Green H2 focusing on steel sector and advanced manufacturing</p> <p>Kickstart process for 42 MW Green energy IPP to supply Tshwane Automotive SEZ</p> <p>Initiate AMD water cleansing project for the N12 corridor (anchored at Cradle) supplying feedstock water for Green H2 as well as for agricultural use.</p> <p>Initiate waste to energy as part of broader waste economy partnership with GCR municipalities</p>	<p>Green industrial baseload</p> <p>Project to deliver Green H2 Production at export scale on as part of N12 corridor SEZ initiated</p> <p>Renewable energy IPPs in major township nodes (9 highest density township clusters, plus Sebokeng and Kagiso) linked to Township Economy Partnership Fund projects, including backyard shack real estate upgrade programme.</p> <p>Green energy systems as part of new bulk installations in Lanseria, Vaal and the West Rand.</p> <p>Deploy buses using H2 fuel cells across the GCR, working in partnership with Busmark and N12 Corridor SEZ</p>	<p>Green H2 Microgrid and other industrial networks deployed</p> <p>Tier 1 Solar PV producer in Gauteng established through ramp of renewable energy grid servicing Green H2 production on N12 corridor to 15 GW scale (feeding a 5 GW electrolyzer)</p> <p>Convert 100% of GCR buses to renewable fuel base</p>	<p>Energy action lab</p> <p>SEZ network</p> <p>SPV for new economic nodes</p> <p>Township Enterprise Zones</p> <p>Township Economy Partnership Fund</p> <p>New green economy partnership fund</p> <p>Partnership with Eskom on microgrid deployment</p> <p>Strategic private sector partnerships</p>



	INDUSTRIAL SECTOR	SPECIAL ECONOMIC ZONES	NEW ECONOMIC NODES	BROADER INDUSTRIAL STIMULUS	MAJOR LIGHTHOUSE/ CATALYTIC PROJECTS			KEY POLICY INSTRUMENTS
					WITHIN 2022-23 FINANCIAL YEAR	WITHIN 6 <sup>TH</sup> ADMINISTRATION	EXPANSION BY 2030	
		package for companies seeking to export to the EU and other carbon-conscious constituencies.		economy opportunities across the GCR ( linked to extended producer responsibility funding)				
2	<b>Transportation and Logistics</b>	<p>Tshwane automotive SEZ includes explicit linkage to hugely upgraded port capacity at Gqerbha and massive upgrade to Southcore line as part of Gauteng-EC high capacity corridor.</p> <p>Tambo springs SEZ will be an extension of the largest dry port on the continent, with Transnet as a key investor, and linkage to Aerotropolis and key new road networks.</p> <p>Vaal River SEZ, Lanseria Hi-tech SEZ and N12 corridor SEZ are all designed to connect</p>	<p>Inclusion of freight network linkages and supporting road networks in master-plans and bulk investment schemes for Lanseria , the Vaal Region and N12 corridor.</p> <p>Inclusion of new public transport networks and supporting road networks in master-plans and bulk investment schemes for Lanseria, the Vaal Region and N12 corridor.</p> <p>Collaboration with ORTIA and ACSA to launch full Aerotropolis project, including the new midfield cargo terminal, including Lanseria-style SPV for the bulk services.</p> <p>Inclusion of air-cargo development projects in the Lanseria and Vaal nodes.</p>	<p>Partnership with Transnet/DPE, Eastern Cape PG and DTIC to operationalise Gauteng Eastern Cape High Capacity Freight Corridor</p> <p>Production hubs for Rolling Stock servicing PRASA and Gauteng-EC High Capacity Corridor as part of rail production cluster in eastern corridor</p> <p>Link value chains to industrial clusters to be developed as part of township enterprise zones</p> <p>Partnership with road freight operators on trucking industrialisation and road to rail</p>	<p>Participate in the institutional mechanism to support the roll-out of the Gauteng-EC High Capacity Rail Corridor.</p> <p>Link in green steel production and wagon production in East of GCR for Gauteng-EC corridor as part of the rollout plan.</p> <p>Finalise 10 year financing package for critical portfolio of economically relevant roads (with DBSA and others)</p> <p>Roll out first dealership and aftermarket repair/ service sites under Toyota partnership for Taxi industry development/ industrialisation</p> <p>Initiate Growthpoint/ DHL dryport project as first development under new Lanseria Masterplan</p>	<p>Completion of Gauteng-EC High Capacity corridor by 2024-25 financial year</p> <p>Complete 50% of approved portfolio of economically critical roads.</p> <p>Rollout of Toyota partnership on Taxi industrialisation across all 5 corridors of GCR</p> <p>Full rollout of partnership with Transnet to set up Gauteng as freight rail nerve centre based on agreed sequencing of dryport/ container hub establishment , including full deployment of partnerships and financing deals.</p> <p>Launch Midfield cargo terminal as part of Aerotropolis project.</p>	<p>Expansion of Freight rail link into SADC</p> <p>Complete 100% of portfolio of economically critical roads.</p> <p>Full realisation of freight and logistics components of master plans in Lanseria, Vaal and N12 corridor</p> <p>Gauteng Expansion (Phase 3)</p>	<p>Freight sector action lab</p> <p>SEZ network</p> <p>SPV for new economic nodes</p> <p>Township Enterprise Zones</p> <p>Township Economy Partnership Fund</p> <p>Partnership with Transnet on Gauteng-EC corridor and dryport network</p> <p>Strategic private sector partnerships</p>

	INDUSTRIAL SECTOR	SPECIAL ECONOMIC ZONES	NEW ECONOMIC NODES	BROADER INDUSTRIAL STIMULUS	MAJOR LIGHTHOUSE/ CATALYTIC PROJECTS			KEY POLICY INSTRUMENTS
					WITHIN 2022-23 FINANCIAL YEAR	WITHIN 6 <sup>TH</sup> ADMINISTRATION	EXPANSION BY 2030	
		with Freight Rail transit systems	Gautrain expansion to service new and emerging nodes, linked to deployment of integrated fair management system (IFMS) to support multi-modal public transport across the GCR  Deployment of Taxi economy fund to support the development of Taxi Ranks as commercial nodes		Finalise partnership with Transnet to set up Gauteng as freight rail nerve centre based on agreed sequencing of dryport/ container hub establishment  Sponsor Aerotropolis as a SIP, planning in Lanseria style bulk SPV – include green aviation fuel component	Establish green aviation fuel supply, linked to Green H2 production, as part  Launch of DHL/ Growthpoint air cargo capacity expansion in Lanseria  Gautrain expansion (Phase 2)  Expand rolling stock production cluster to supply export markets		
3	<b>ICT, Media and Digital Services – the digital economy</b>	Hi-tech SEZ to be deployed in Lanseria as part of smart city, including support for green urban technologies, a digital government sandbox using blockchain systems, smart infrastructure and latest connectivity technologies  Establishment of GBS SEZ at Nasrec, with crosslink to Braamfontein tech	Inclusion of baseline infrastructure for state-subsidised backhaul (in order to drive free basic broadband) in the bulk infrastructure planning of special purpose vehicles for new nodal developments in Lanseria, the Vaal and West Rand.	GBS implementation charter on deploying township business process support clusters, work from home clusters and hot-desking sites to support gig economy/ creator economy businesses across the GCR.  Action lab with digital council on unlocking last mile broadband into township areas has drawn up a	Activation of broadband action lab roadmap  Deployment of first stages of GBS implementation charter  Configuration of delivery vehicle for Lanseria High Tech SEZ	Broadband / 5G rollout at 70-80%, incl. free basic broadband  Global business service hub / hotdesk expansion to 9 main township nodes  Hotdesks for gig economy businesses deployed in key precincts in township enterprise zones  Initiation of universal broadband rollout in	100% Broadband/ 5G roll-out incl. free basic broadband  GBS hubs/ hotdesks and data centres in 5 main township nodes in each corridor	ICT / broadband action lab  GBS action lab  SEZ network  SPV for new economic nodes  Township Enterprise Zones  Township Economy Partnership Fund

	INDUSTRIAL SECTOR	SPECIAL ECONOMIC ZONES	NEW ECONOMIC NODES	BROADER INDUSTRIAL STIMULUS	MAJOR LIGHTHOUSE/ CATALYTIC PROJECTS			KEY POLICY INSTRUMENTS
					WITHIN 2022-23 FINANCIAL YEAR	WITHIN 6 <sup>TH</sup> ADMINISTRATION	EXPANSION BY 2030	
		<p>precinct / Tshimologong</p> <p>Protea Business Park node of proposed N12 Corridor SEZ includes significant ICT business service investment.</p> <p>Cloud and business support services to be integrated into Vaal River SEZ.</p>		<p>comprehensive roadmap, including provisions which now form part of Township Economic Development Bill</p> <p>GCR positioned as pilot for the broadband access fund , subsidising 50,000 households to connect to high speed broadband</p>		township enterprise zones		Strategic private sector partnerships
4	<b>Tourism and Hospitality</b>	<p>The wider precincts of each SEZ include opportunities for business hospitality sites (modelled on COEGA site).</p> <p>SEZ operating companies to enter into dedicated partnerships with hotel networks and air lines to support business tourism as a spin-off activity.</p>	<p>Evolution of Cradle of Humankind, Dinokeng and other recreational assets in NW Gauteng through linkage to Lanseria masterplan (cross-link to Hartebeesport recreational cluster via inclusion of Madibeng).</p> <p>Evolution of tourism infrastructure linked to Vaal River region as part of Vaal Masterplan</p>	<p>Major event driven tourism tying in tourism precincts in township enterprise zones</p> <p>Partnership with OR Tambo international airport to explicitly promote new flights directly into GCR and connecting via GCR through subsidisation of landing slots, provision of green aviation fuel (linked to energy sector activities) and</p>	<p>Launch of Air Access Gauteng to drive aviation traffic into GCR</p> <p>Conclude negotiation phases of new tourism infrastructure linked to Lanseria and Vaal regions executed as part of masterplan ( including new Gaming and Leisure complex in Lanseria and revitalization of Vaal Region leisure and conferencing infrastructure)</p>	<p>Major event-driven tourism</p> <p>Full realisation of Gauteng Air Access partnership, including continental links driven by African single market.</p> <p>Full establishment of tourism infrastructure linked to Lanseria and Vaal regions executed as part of masterplan, including linkages to eco-tourism assets in both regions.</p>	<p>500% expansion of aviation access to GCR from key global business tourism centres.</p>	<p>Tourism action lab</p> <p>SEZ network</p> <p>SPV for new economic nodes</p> <p>Township Enterprise Zones</p> <p>Township Economy Partnership Fund</p> <p>Strategic private sector partnerships</p>

	INDUSTRIAL SECTOR	SPECIAL ECONOMIC ZONES	NEW ECONOMIC NODES	BROADER INDUSTRIAL STIMULUS	MAJOR LIGHTHOUSE/ CATALYTIC PROJECTS			KEY POLICY INSTRUMENTS
					WITHIN 2022-23 FINANCIAL YEAR	WITHIN 6 <sup>TH</sup> ADMINISTRATION	EXPANSION BY 2030	
				concessional deals with hotel groups.				
5	<b>Agri-food and Agribusiness, focusing on value chains</b>	<p>The N12 corridor SEZ and Vaal River SEZ are both designed with significant agro-processing components.</p> <p>The Tambo Springs SEZ is also designed to accommodate elements of the agro-processing value chain</p>	<p>The masterplans for Lanseria, the Vaal Region and the N12 corridor all include provisions for areas that have an agri-business/ agro-processing profile.</p> <p>The N12 corridor masterplan includes provision for a new fresh produce market to be situated in the west.</p>	<p>A dedicated programme to develop a new fresh produce market for the N12 corridor linked to local agri-hubs directly supports the N12 Corridor SEZ</p> <p>Partnership with agri-business to increase bulk-supply of fresh produce , meat and dairy to township based restaurants embedded as part of Township economy revitalization (also links to agri-hub network)</p>	<p>Financial close and initial rollout of agro-processing/ agro-industrial ecosystem along N12 corridor, with build phase initiated on linked new fresh produce market in the West.</p> <p>This will include collaboration with the Agricultural Development Agency (AGDA) under the Public Private Growth Initiative, the Bokomoso Ba Rona initiative and the Protea west industrial park on dedicated agro-processing partnerships underpinning the ecosystem to be focused on the west rand.</p> <p>This will also include Rollout of township restaurant bulk food supply initiative with agri-business, in the 9 most populous townships in the GCR, linking in agri-hub networks</p>	<p>Expansion of agro-processing to supply products for exports across Africa under African continental free trade agreement (ACFTA)</p> <p>Expand bulk food supply initiative to include distribution through wider network of food wholesale markets</p> <p>Expand agri-hub networks to all township areas across the GCR</p>	<p>Full realisation of agro-processing components of N12 Corridor , Vaal and OR Tambo SEZs integrating supply from Agri-hubs , combining export into Africa and wider global markets with distribution via network of local wholesale food markets.</p>	<p>Agri-processing action lab (AGDA partnership)</p> <p>SEZ network</p> <p>SPV for new economic nodes</p> <p>Township Enterprise Zones</p> <p>Township Economy Partnership Fund</p> <p>Strategic private sector partnerships</p>

	INDUSTRIAL SECTOR	SPECIAL ECONOMIC ZONES	NEW ECONOMIC NODES	BROADER INDUSTRIAL STIMULUS	MAJOR LIGHTHOUSE/ CATALYTIC PROJECTS			KEY POLICY INSTRUMENTS
					WITHIN 2022-23 FINANCIAL YEAR	WITHIN 6 <sup>TH</sup> ADMINISTRATION	EXPANSION BY 2030	
6	<b>Construction and Infrastructure</b>	<p>Development of each SEZ site explicitly designed to expand the capabilities of the construction sector in the surrounding area of each SEZ and wider GCR through multi-level enterprise development programmes</p> <p>SEZ evolution will include the manufacturing of construction/ infrastructure components for utilization within the GCR as well as export.</p>	<p>The infrastructure investment schemes for the new urban nodes (Lanseria, Vaal, N12 corridor) as well as for OR Tambo aerotropolis will fund the deployment of all public infrastructure necessary to unlock private sector developments.</p> <p>Housing mega-projects include explicit commitments to expand the construction sector in the surrounding area of each SEZ and wider GCR through multi-level enterprise development programmes, including evolution of 40 black industrialists in the construction sector.</p> <p>Deployment of R54 billion GPG Infrastructure programme , including social infrastructure as a component of mixed used precincts.</p>	<p>Revitalization of township industrial estates as manufacturing clusters for key inputs into the manufacturing/ construction sectors</p> <p>Linkage of township backyard real estate upgrade initiative to manufacturing of construction sector inputs, with a focus on alternative building technology and off-grid technologies</p>	<p>Expansion of construction sector SMME capacity through 45% set aside of construction value of each SEZ site for enterprise development channels,.</p> <p>Initial Deployment of infrastructure investment schemes for Lanseria (establishment of dedicated PMU with DBSA)</p>	<p>Reconfiguration of township industrial estates as production sites for construction/ infrastructure components as part of township enterprise zones</p> <p>Accelerated Deployment of R54 billion GPG Infrastructure programme , including social infrastructure as a component of mixed used precincts</p> <p>Midpoint of implementation of infrastructure build programme through infrastructure investment schemes for all 3 new nodes</p> <p>Sourcing of 50%-plus of local content requirements for GCR infrastructure projects from production clusters within Gauteng , including SEZs and township industrial estates</p>	<p>Full realisation of ten-year targets for implementation of infrastructure build programme for all 3 new nodes as well as OR Tambo aerotropolis (via infrastructure investment schemes/ special purpose vehicles)</p>	<p>Construction action lab</p> <p>SEZ network</p> <p>SPV for new economic nodes (Lanseria PMU)</p> <p>Township Enterprise Zones</p> <p>Township Economy Partnership Fund</p> <p>Strategic private sector partnerships</p>

	INDUSTRIAL SECTOR	SPECIAL ECONOMIC ZONES	NEW ECONOMIC NODES	BROADER INDUSTRIAL STIMULUS	MAJOR LIGHTHOUSE/ CATALYTIC PROJECTS			KEY POLICY INSTRUMENTS
					WITHIN 2022-23 FINANCIAL YEAR	WITHIN 6 <sup>TH</sup> ADMINISTRATION	EXPANSION BY 2030	
						40 black industrialists established through contracts linked to human settlements mega projects		
7	<b>Automotive, Aerospace and Defence</b>	<p>Tshwane Automotive SEZ acts as anchor of wider automotive industrial cluster in Rosslyn/Silverton area.</p> <p>The N12 corridor SEZ includes provision for expansion of bus manufacturing as part of West City Industrial park.</p> <p>Vaal River SEZ includes provision for advanced manufacturing as part of new/ revitalised industrial capacity.</p> <p>OR Tambo SEZ will include provision for hydrogen fuel cell production as a component of future green automobiles</p> <p>Toyota partnership will include reconfiguration of</p>	<p>Partnership with Transnet to evolve GCR into a nerve centre for freight rail (dryports network) explicitly services the needs of the automotive and advanced manufacturing sectors.</p> <p>Commercial and industrial segments of new economic nodes in Lanseria, N12 corridor and the Vaal Region include provision for advanced manufacturing businesses.</p>	<p>Automotive sector development programme delivered through Automotive Industry development corporation (AIDC) including supplier development in manufacturing value chain to meet local content requirements.</p> <p>Partnership with the taxi industry to develop repair and service capacity as part of township economy hubs operated by professional companies, with equity flowing to trusts owned by local taxi associations</p> <p>Partnership with the Retail motor industry association on scaling up dealerships and</p>	<p>Full launch of Tshwane Automotive Special Economic Zone (TASEZ) producing 200,000 vehicles per annum by 2022.</p> <p>Roll out first dealership and aftermarket repair/ service sites under partnerships for Taxi industry development/ industrialisation, including implementation and replication of Alexandra Automotive as a Taxi economy node</p>	<p>Evolution of auto industry supplier development programme to provide over 80% of local content requirements for vehicles produced in the GCR.</p> <p>Establishment of a full scale electric vehicle production and adoption support programme spearheaded by TASEZ &amp; Rosslyn.</p>	<p>Full evolution of Tshwane automotive cluster and wider SEZ network as mass production system for vehicles exported into Africa and across the globe , expanding volumes by 500% from 2022 baseline to a million vehicles a year</p>	<p>Automotive action lab</p> <p>Automotive industry Transformation fund partnership</p> <p>SEZ network</p> <p>SPV for new economic nodes (Lanseria PMU)</p> <p>Township Enterprise Zones</p> <p>Township Economy Partnership Fund</p> <p>Strategic private sector partnerships</p>

	INDUSTRIAL SECTOR	SPECIAL ECONOMIC ZONES	NEW ECONOMIC NODES	BROADER INDUSTRIAL STIMULUS	MAJOR LIGHTHOUSE/ CATALYTIC PROJECTS			KEY POLICY INSTRUMENTS
					WITHIN 2022-23 FINANCIAL YEAR	WITHIN 6 <sup>TH</sup> ADMINISTRATION	EXPANSION BY 2030	
		<p>township industrial parks to support refurb and re-use businesses supporting taxi fleets</p> <p>Centurion Aerospace Village to be deployed as an SEZ for defence/aerospace</p> <p>Upgrade and expand Rosslyn cluster to include DKD hub serving African market and auto-specific dryport. Integrate cluster into Tshwane Automotive SEZ.</p>		after market facilities across the GCR.				
8	<b>Financial Services</b>	The provisions for global business services and ICT directly support the expansion of financial services capacity within the GCR (Lanseria high tech SEZ, Nasrec GBS SEZ etc)	The provisions for global business services and ICT directly support the expansion of financial services capacity within the GCR	<p>The Township Economy Partnership Fund provides wholesale funding to non-bank financial intermediaries which can de-risk providing working capital, stock credit and purchase order financing to historically unbanked township-based and township linked firms.</p> <p>This initiative directly supports the</p>	<p>Rollout and institutionalization of Township Economy Partnership Fund as a broad based expansion vehicle for the financial services sector in the GCR</p> <p>Deploy dedicated partnerships on Fintech as an enabler of SMME development via Financial Services Action Lab , focused on the township enterprise zones</p>	<p>Build on Township economy partnership fund to scale financing from environmental sustainable and growth oriented (ESG) impact investment funds.</p> <p>Expand Global Business service cloud hubs in GCR to provide back-office support and online customer engagement for financial services offerings traded across</p>	<p>Attain 80% plus digital business banking coverage via fintech systems targeting township enterprise zones.</p> <p>Affirm and expand GCR as the backbone of African continental financial services sector. This includes positioning the GCR as the lead</p>	<p>Financial services action lab</p> <p>SEZ network</p> <p>SPV for new economic nodes (Lanseria PMU)</p> <p>Township Enterprise Zones</p> <p>Township Economy Partnership Fund</p>

	INDUSTRIAL SECTOR	SPECIAL ECONOMIC ZONES	NEW ECONOMIC NODES	BROADER INDUSTRIAL STIMULUS	MAJOR LIGHTHOUSE/ CATALYTIC PROJECTS			KEY POLICY INSTRUMENTS
					WITHIN 2022-23 FINANCIAL YEAR	WITHIN 6 <sup>TH</sup> ADMINISTRATION	EXPANSION BY 2030	
				expansion of the financial services sector to the bottom of the pyramid across the GCR.		the African continent as part of GCR market expansion under the African Continental Free Trade Agreement (ACFTA)	provider of liquidity and market-making platforms for structured finance continentally, and for customer interface and support services for the retail side of the sector.	Strategic private sector partnerships
9	<b>Cultural and Construction Sector</b>	The SEZ provision for digital services and cloud hubs directly support the needs of the gaming and animation sectors.	Master-planning for the new urban nodes (Lanseria, Vaal and N12 corridor) explicitly designate social infrastructure requirements which include new performance spaces/ theatres and museum spaces.  Tshimologong and similar emerging digital clusters (including the new township hubs/ hotdesks for digital businesses) provide an operating platform for gamers	Platform deployment supporting a million livelihoods across the creator economy, aligned with hotdesks.  Digital Construction Sector support initiative focused on the Gaming Industry – creating a services accelerator linked to international gaming companies cross-subsidizing an incubator for local gaming content	Launch of million livelihoods creator economy platform network	Expansion of gaming and animation incubator and accelerator to establish dominant gaming/animation cluster on African continent, serving global markets.  Establishment of new museums as attractions linked to multi-modal precincts	Fully evolve GCR as host to digital creative arts cluster servicing both Africa and global markets, with 40% or more of industry value accounted for by production of local gaming content for domestic and export markets	Cultural and Construction Sector action lab  Automotive industry Transformation fund partnership  SEZ network  SPV for new economic nodes (Lanseria PMU)  Township Enterprise Zones  Township Economy Partnership Fund  Strategic private sector partnerships
10	<b>Industrialisation of Cannabis</b>	Cannabis industrialisation will be technically and logistically supported	Cannabis industrialisation to be included in masterplan-supported	Cannabis/ hemp sector incubators set up in key nodes, linked to township	Cannabis ecosystem support programme to existing networks of cannabis and hemp	Deployment of cannabis/ hemp sector incubators for new sector black industrialsits	GCR positioned as a lead geography for cannabis and hemp production, with	Cannabis action lab  SEZ network



INDUSTRIAL SECTOR	SPECIAL ECONOMIC ZONES	NEW ECONOMIC NODES	BROADER INDUSTRIAL STIMULUS	MAJOR LIGHTHOUSE/ CATALYTIC PROJECTS			KEY POLICY INSTRUMENTS
				WITHIN 2022-23 FINANCIAL YEAR	WITHIN 6 <sup>TH</sup> ADMINISTRATION	EXPANSION BY 2030	
	<p>as a subset of the agro-processing growth path in N12 corridor and Vaal SEZs , with specific sectoral support in terms of assistance with regulatory compliance.</p> <p>Hemp product value chains to be located in revitalised industrial parks</p>	sectors in both Vaal and West Rand	<p>enterprise zones (part of specialist precincts)</p> <p>Finalization of a “Sandbox” regulation for Cannabis as an industrial sector in Gauteng to serve as a national pathfinder</p>	<p>producers to be established</p> <p>Networks of larger scale Cannabis sector investments designed is as part of N12 corridor and Vaal SEZs, with initial roll-out supported by the respective SEZ companies</p> <p>Drafting of a “Sandbox” regulation for Cannabis as an industrial sector in Gauteng to serve as a national pathfinder</p>	<p>Rollout of cannabis sector investments (medicinal as well as hemp) in Vaal and West Rand, with specific nodes across the GCR.</p>	both export and domestic market linkages.	<p>SPV for new economic nodes</p> <p>Township Enterprise Zones</p> <p>Township Economy Partnership Fund</p> <p>Strategic private sector partnerships</p>