

GAUTENG PROVINCIAL COMMAND COUNCIL

Weekly Media Update on COVID-19

30 July 2020

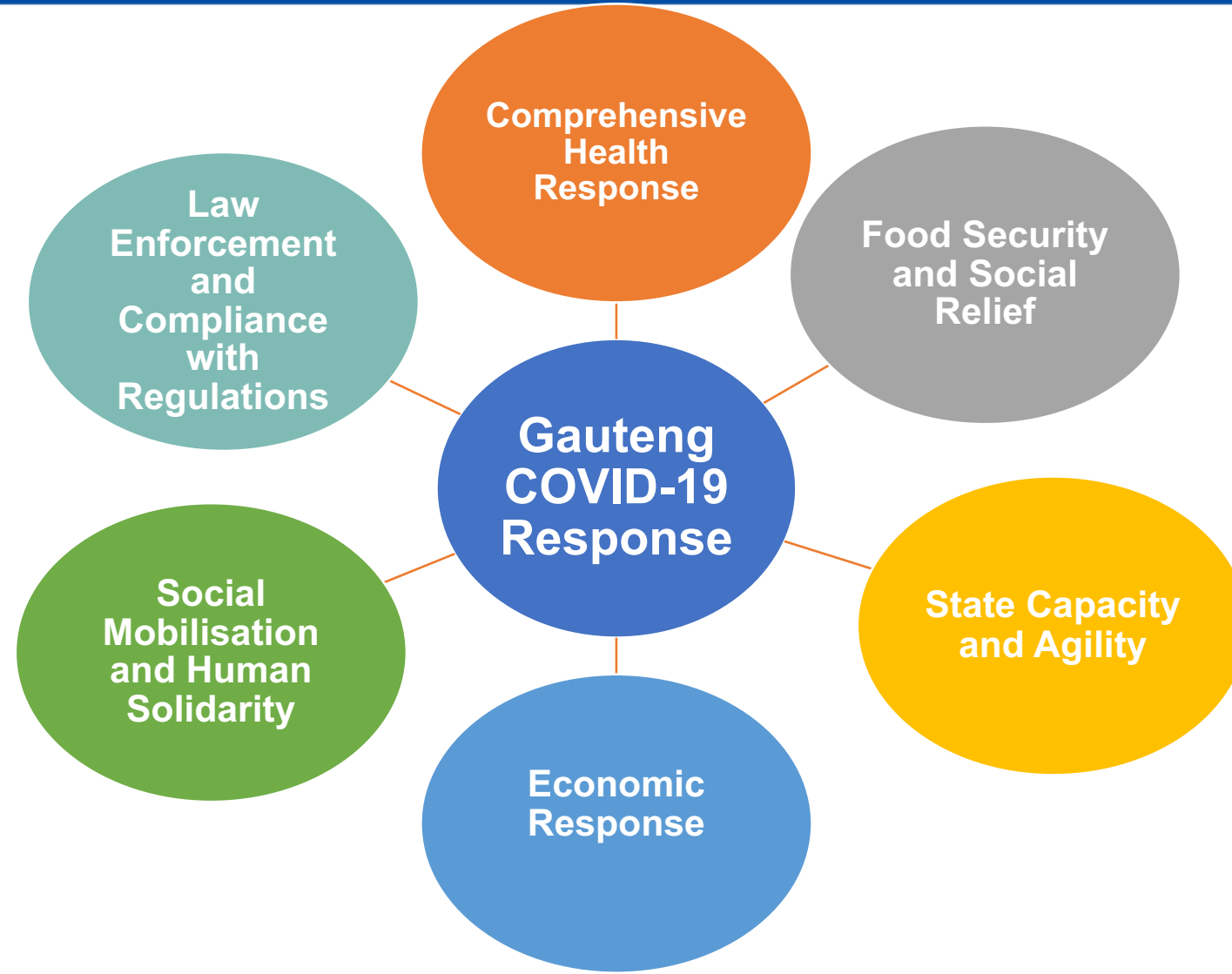


GAUTENG
PROVINCIAL GOVERNMENT
REPUBLIC OF SOUTH AFRICA

GGT2030
GROWING GAUTENG TOGETHER



Gauteng COVID-19 response: Six pillars



Comprehensive Health Response



GAUTENG
PROVINCIAL GOVERNMENT
REPUBLIC OF SOUTH AFRICA

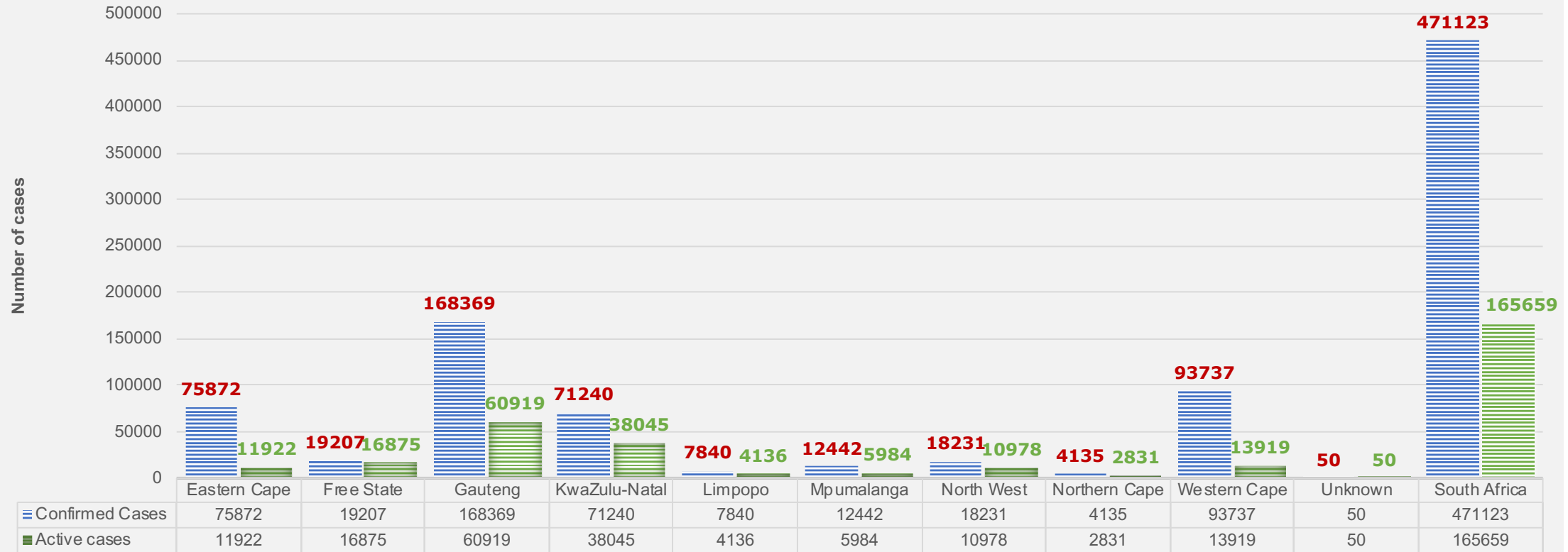
GGT2030
GROWING GAUTENG TOGETHER



National Picture: 29 July 2020

Confirmed cases	Recoveries	Deaths	Tests Conducted	New cases
471 123	297 967	7 497	2 873 163	11 362

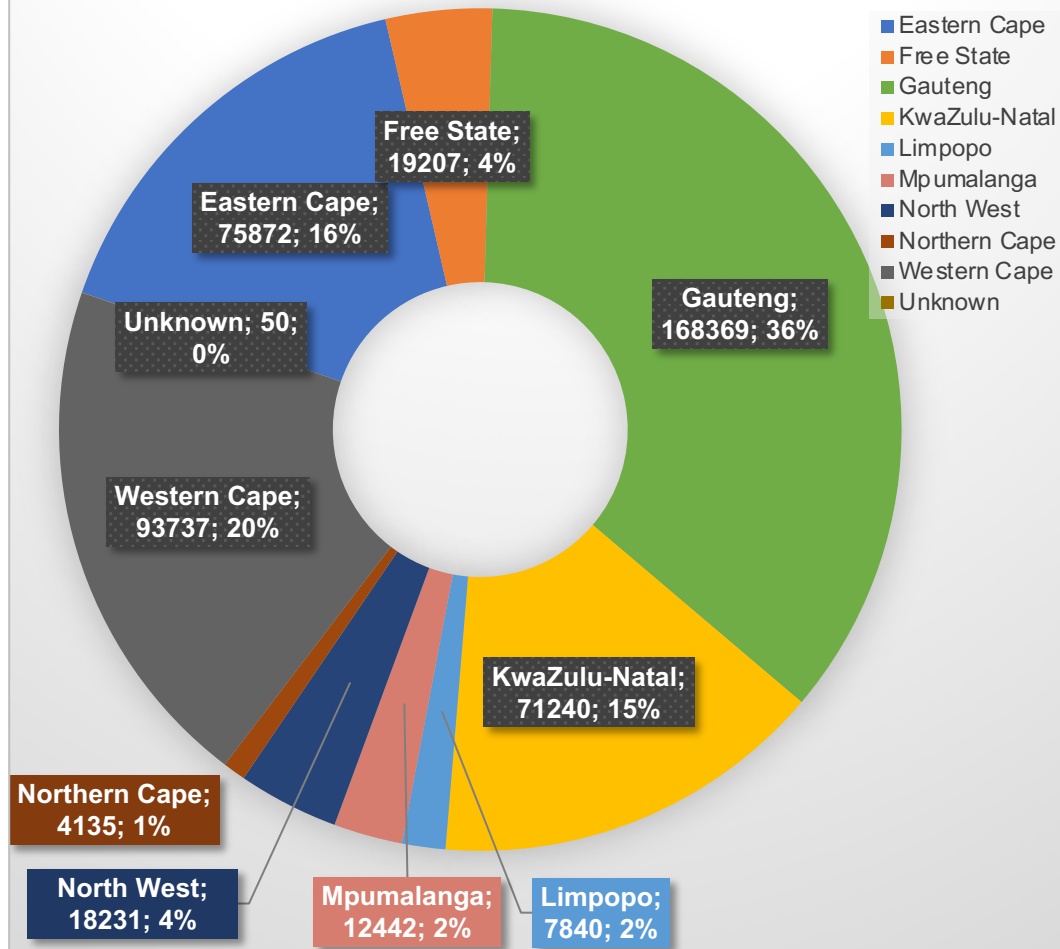
South Africa: National Picture
confirmed and active cases as at 29 July 2020



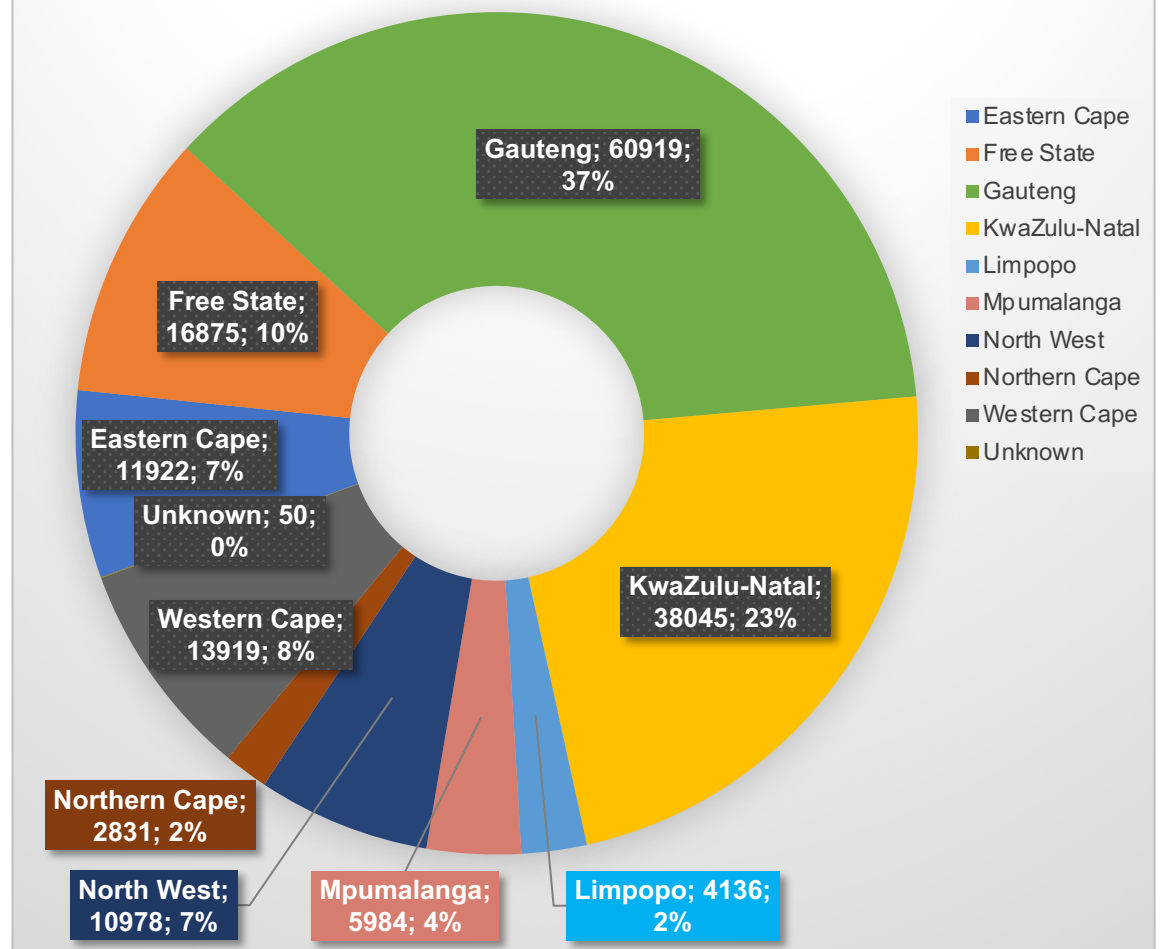


National picture: Confirmed and active cases

South Africa: Confirmed Cases as at 29 July 2020



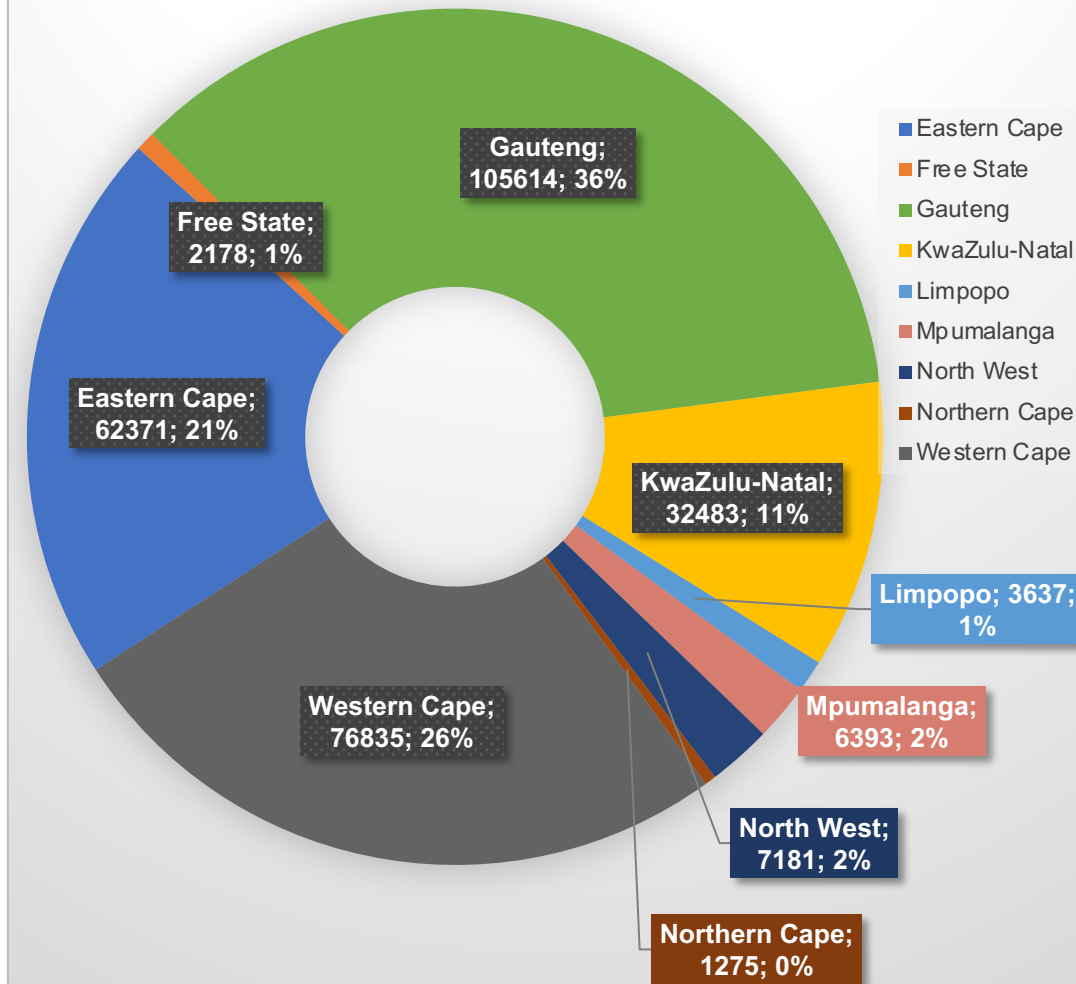
South Africa: Active cases as at 29 July 2020



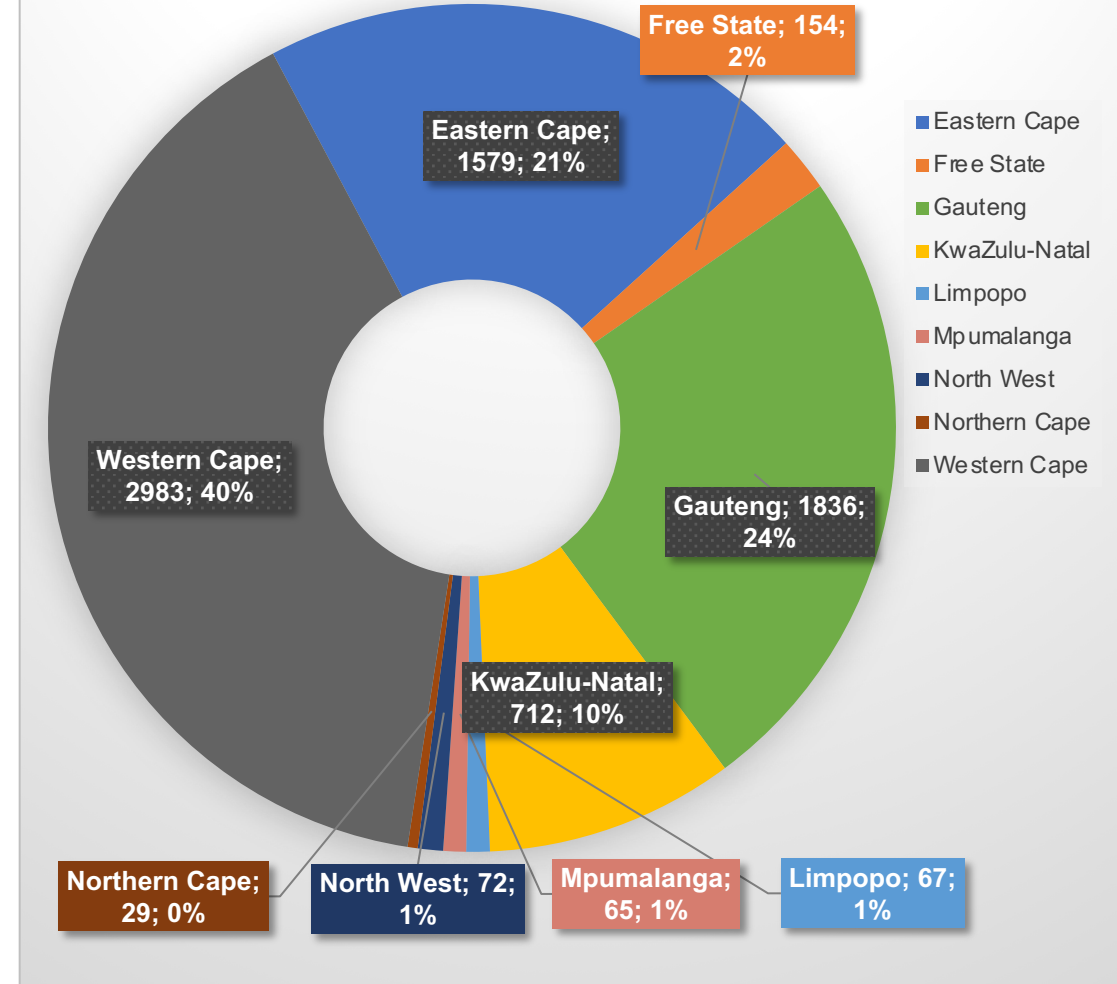


National picture: Recoveries and deaths

South Africa: Recoveries as at 29 July 2020

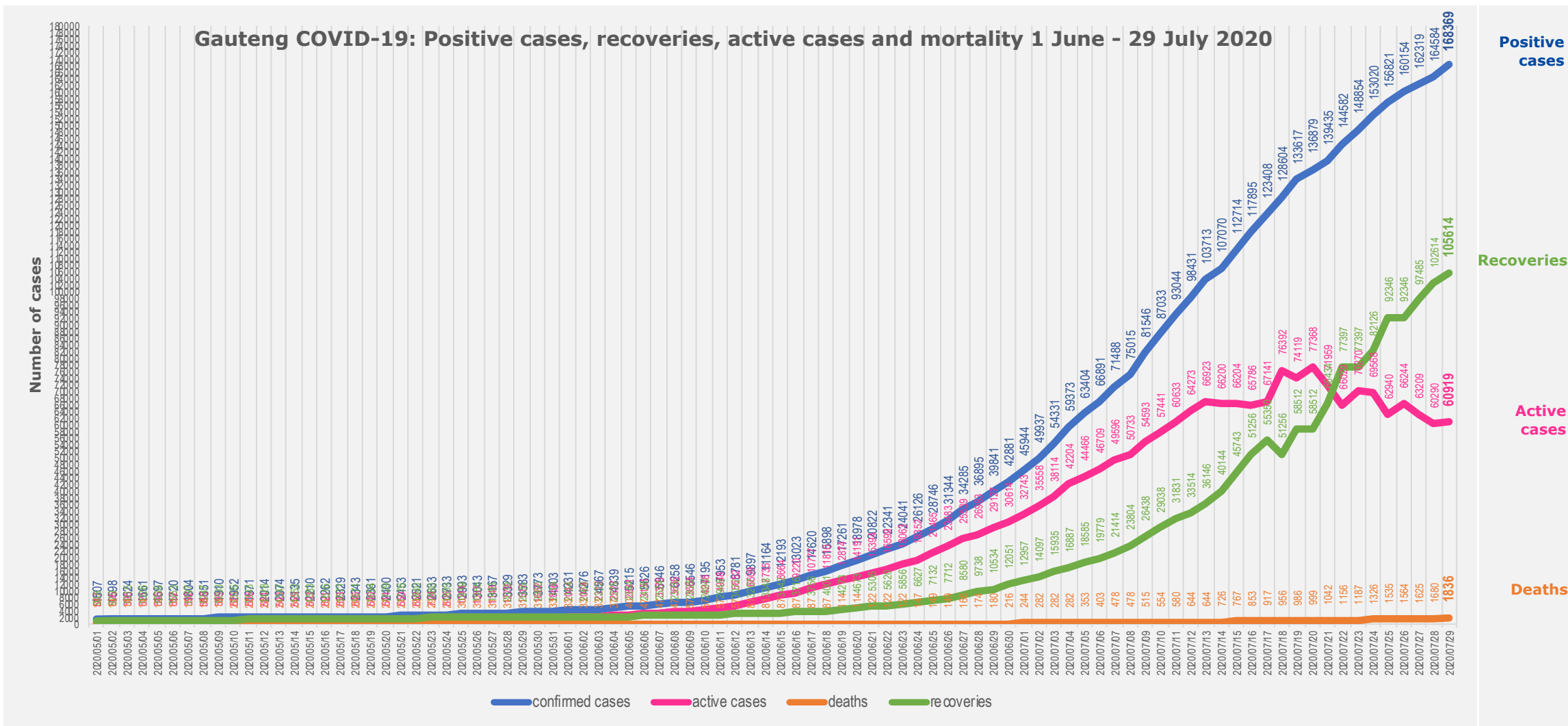


South Africa: Deaths as at 29 July 2020



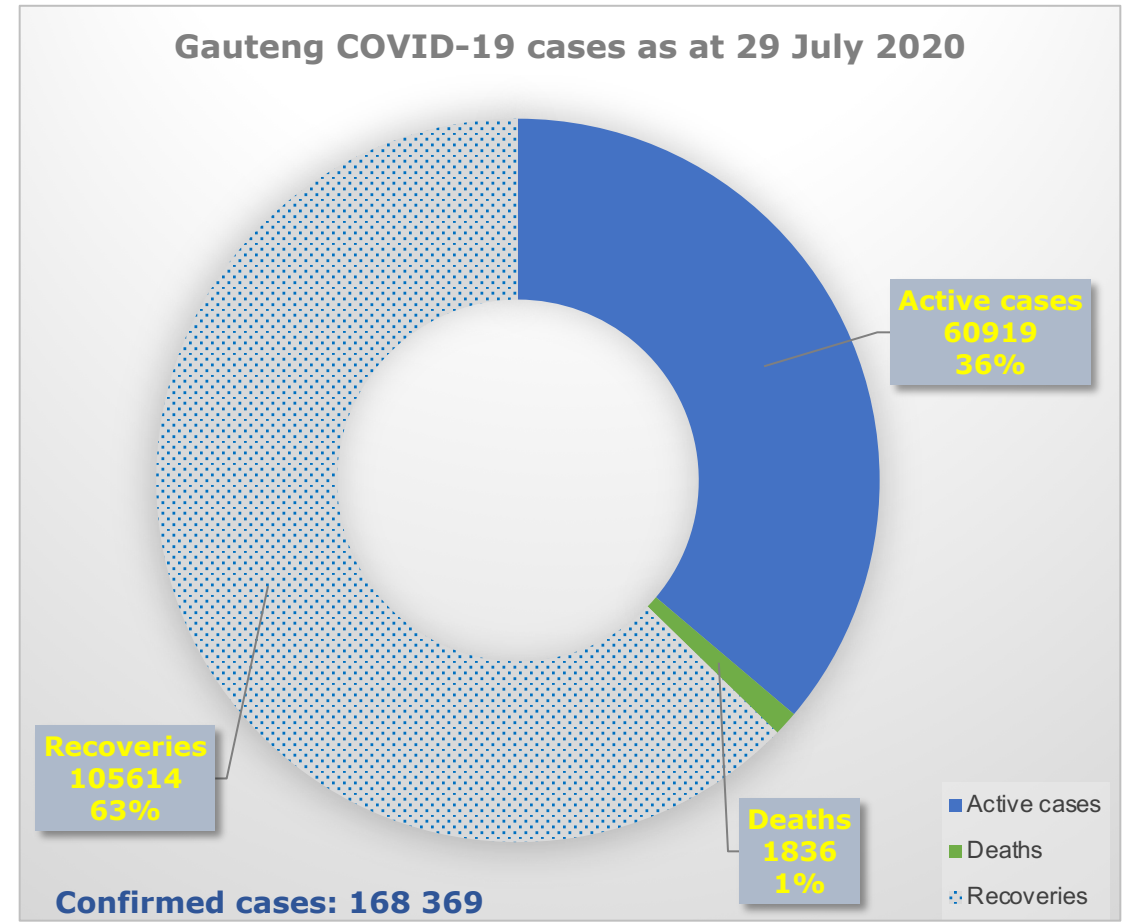
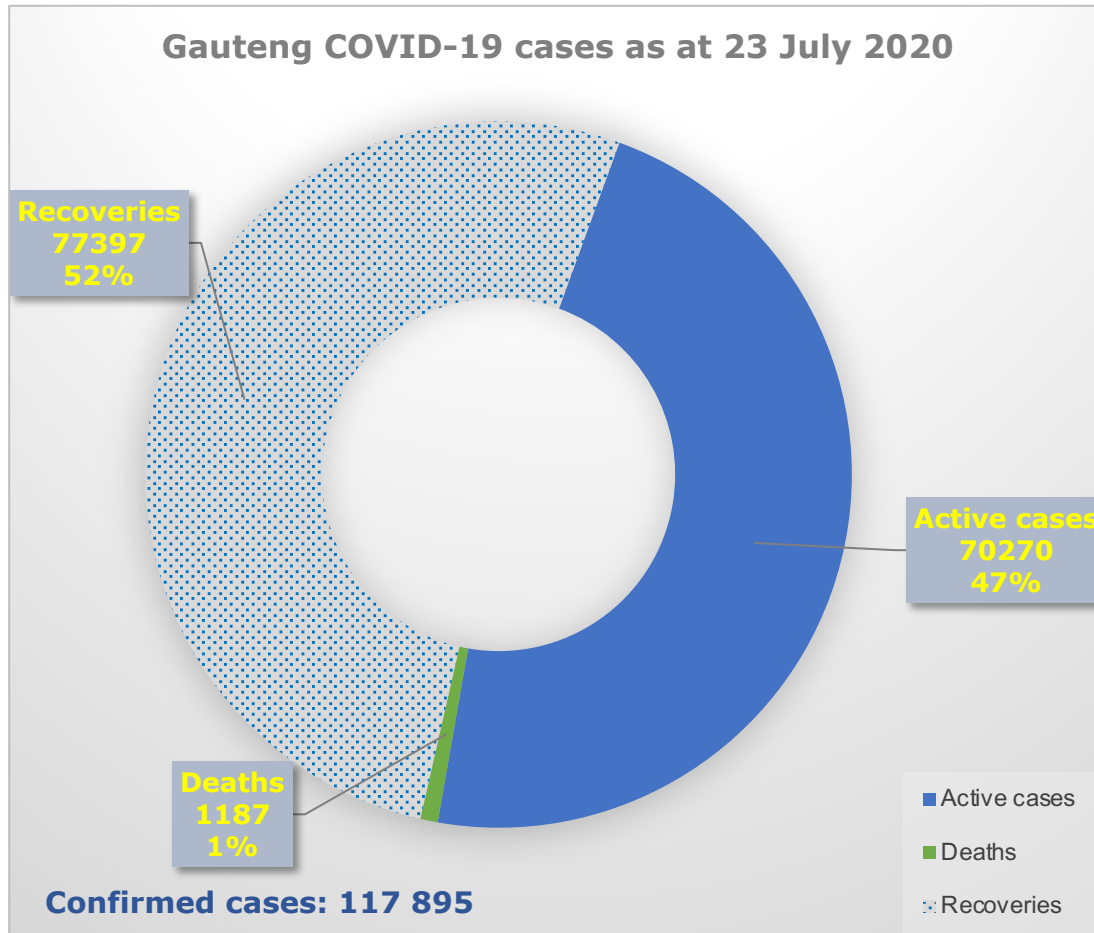


Gauteng COVID-19: Positive cases, recoveries, active cases and mortality



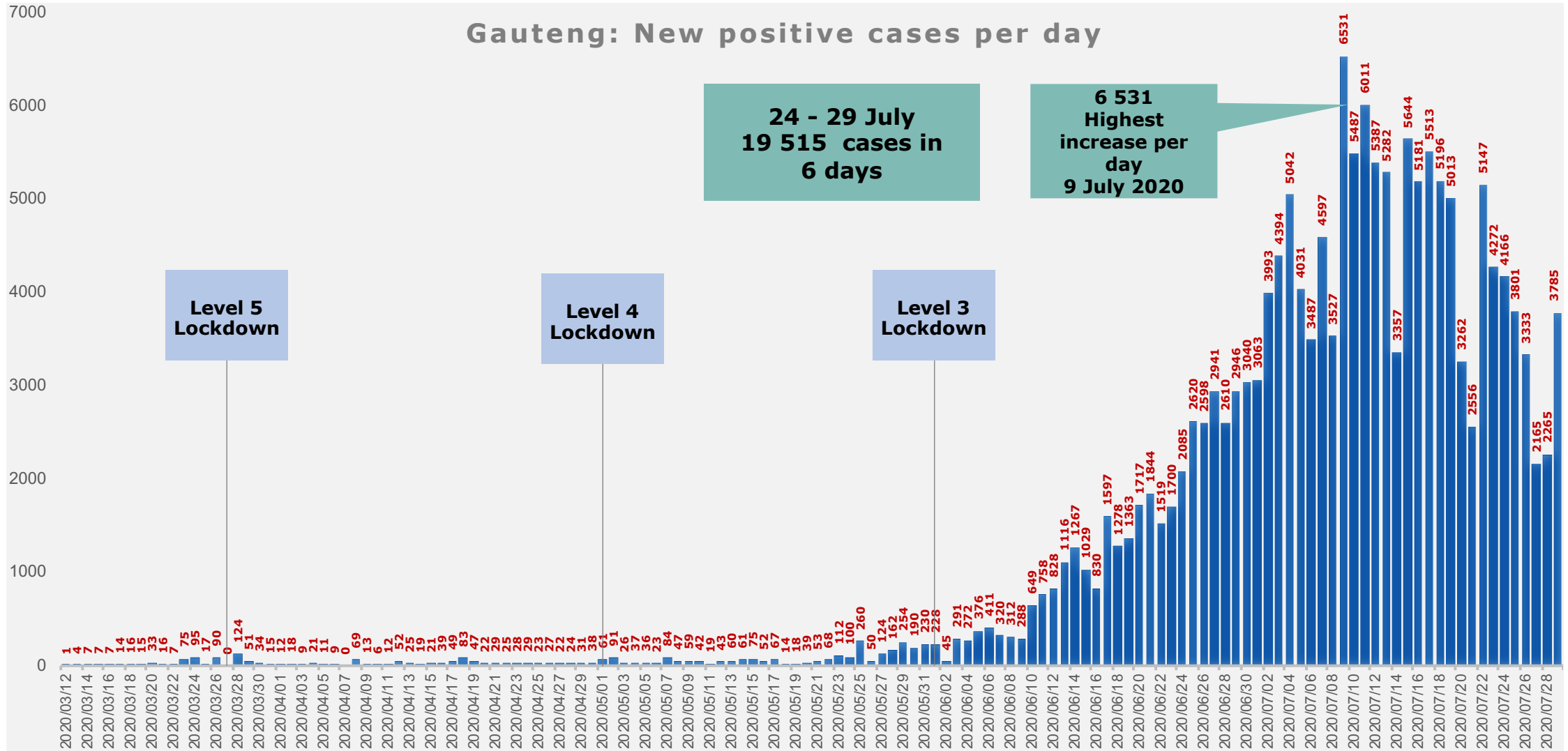


Gauteng COVID-19: Cases as at 29 July 2020



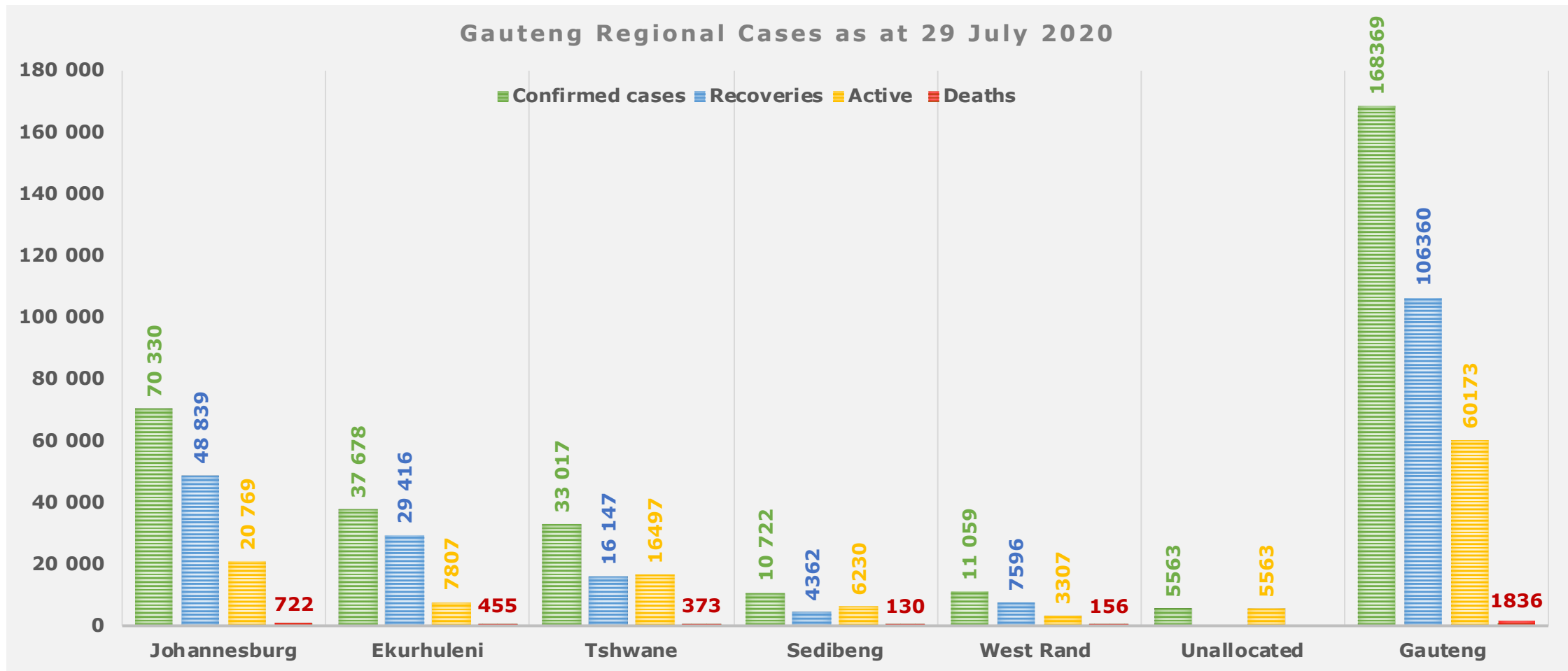


Gauteng COVID-19: New positive cases per day





Gauteng COVID-19: Regional breakdown of positive, recovered, active and deaths



Recovery rate per district:

JHB: 46%

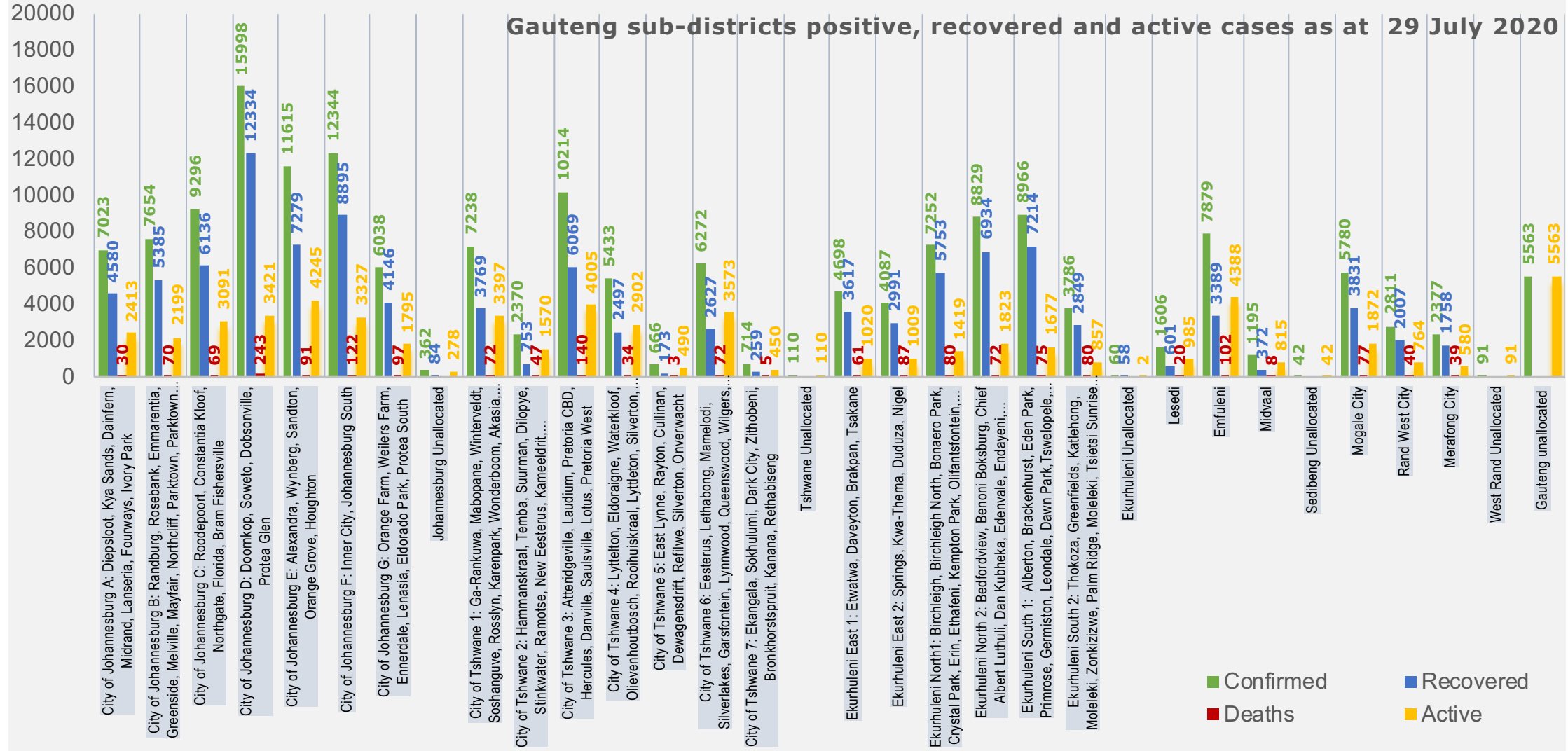
EKU: 28%

TSH: 15%

SED: 4%

WR: 7%

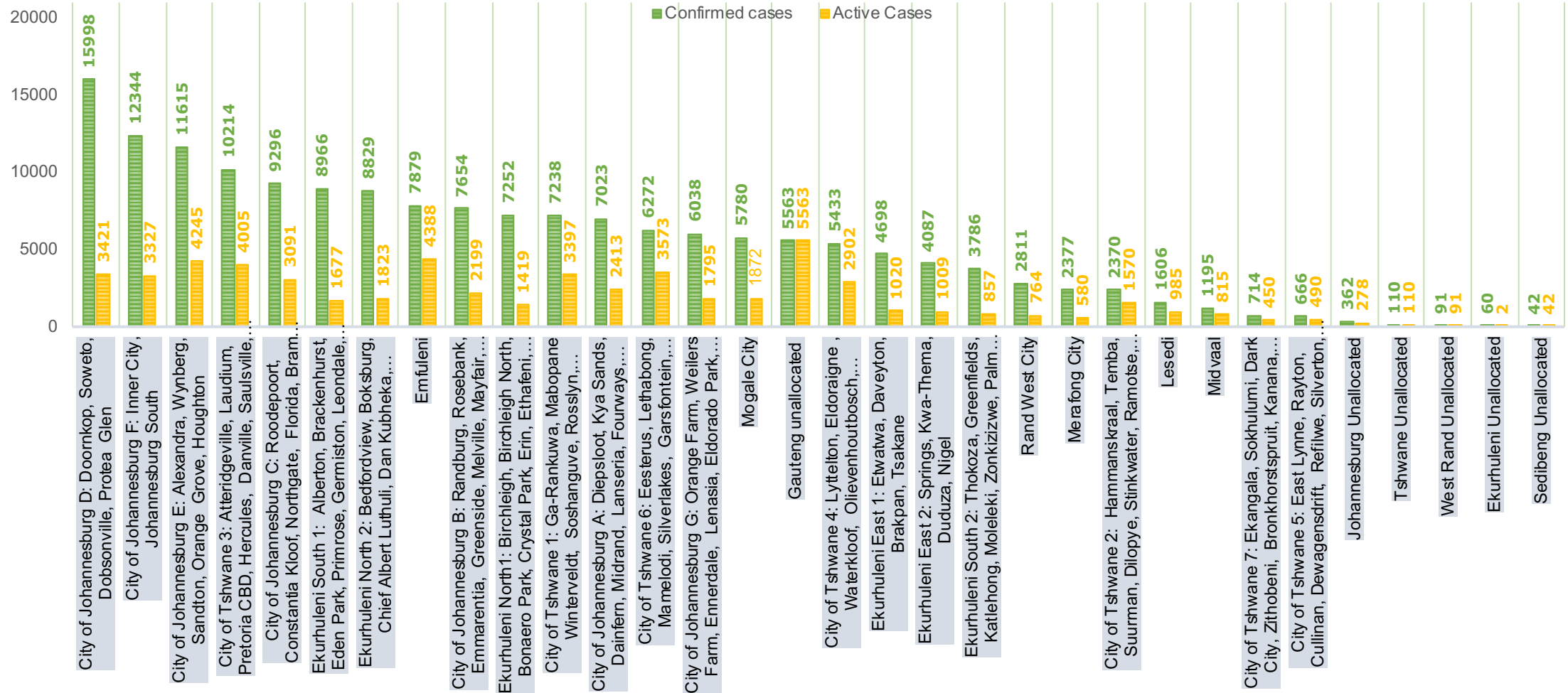
Gauteng sub-districts as at 29 July 2020





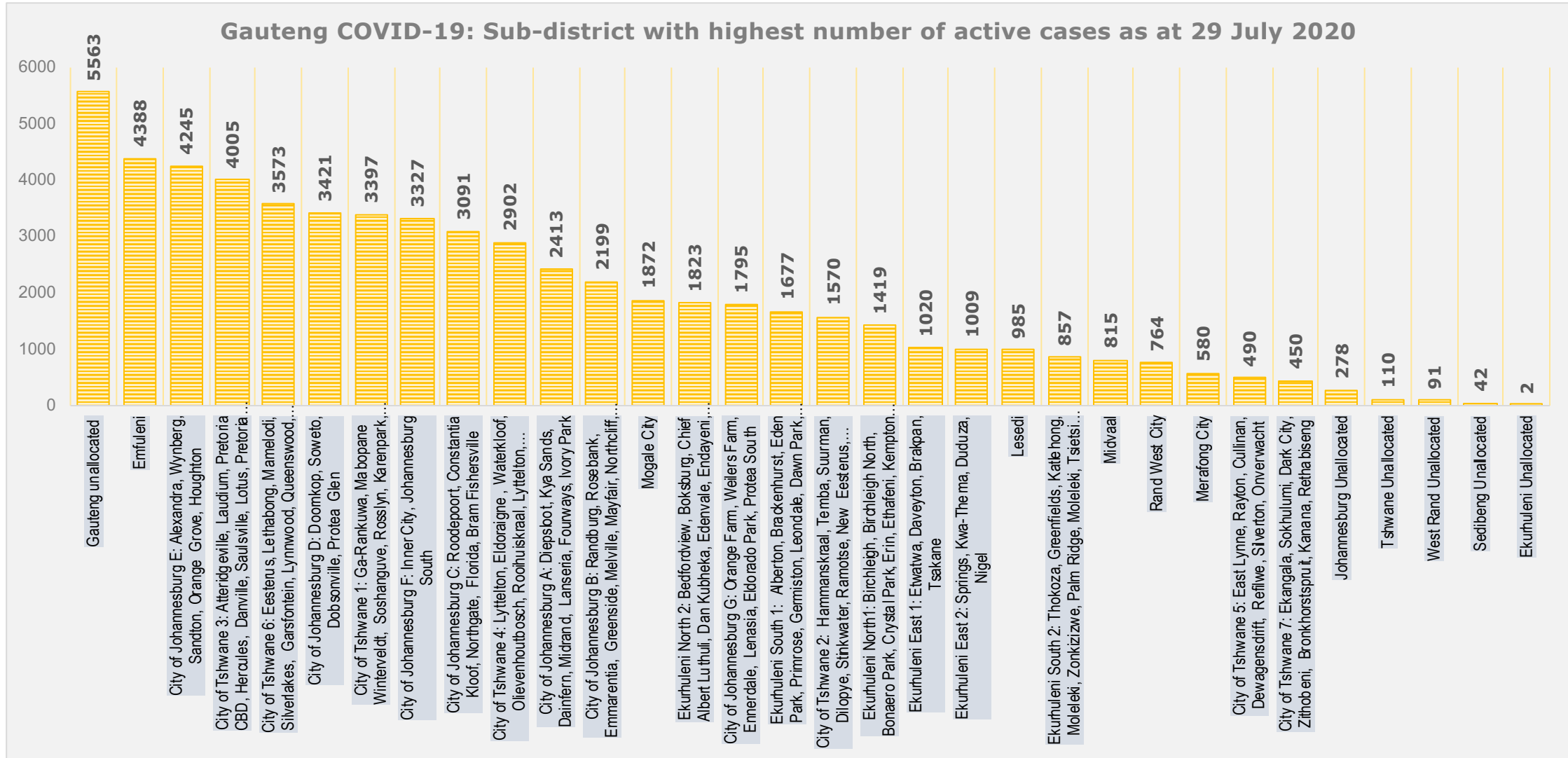
Gauteng COVID-19: Highest Confirmed and active cases per sub-district

Gauteng COVID-19: Highest confirmed and active cases per sub-district as at 29 July



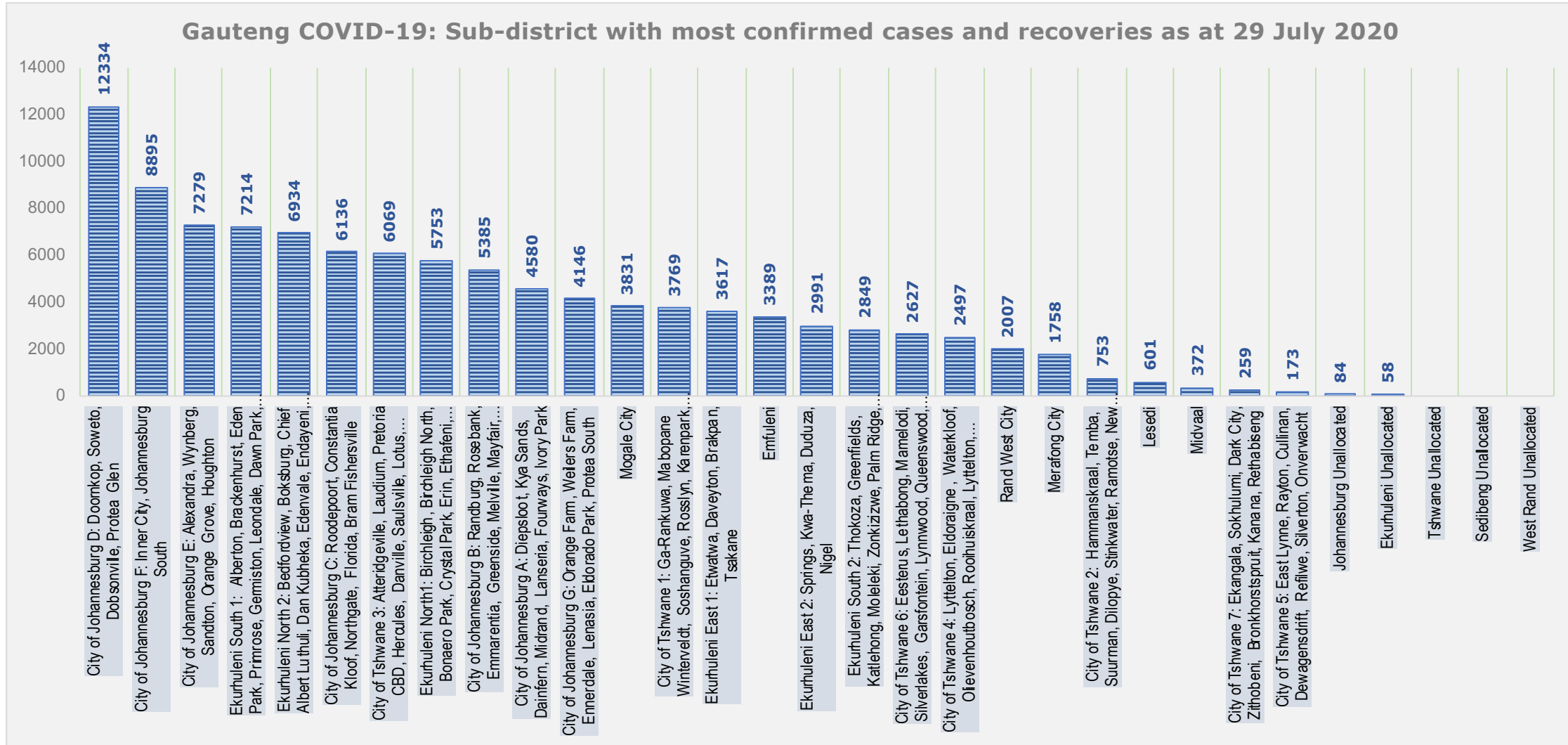


Gauteng COVID-19: Sub-district with highest number of active cases



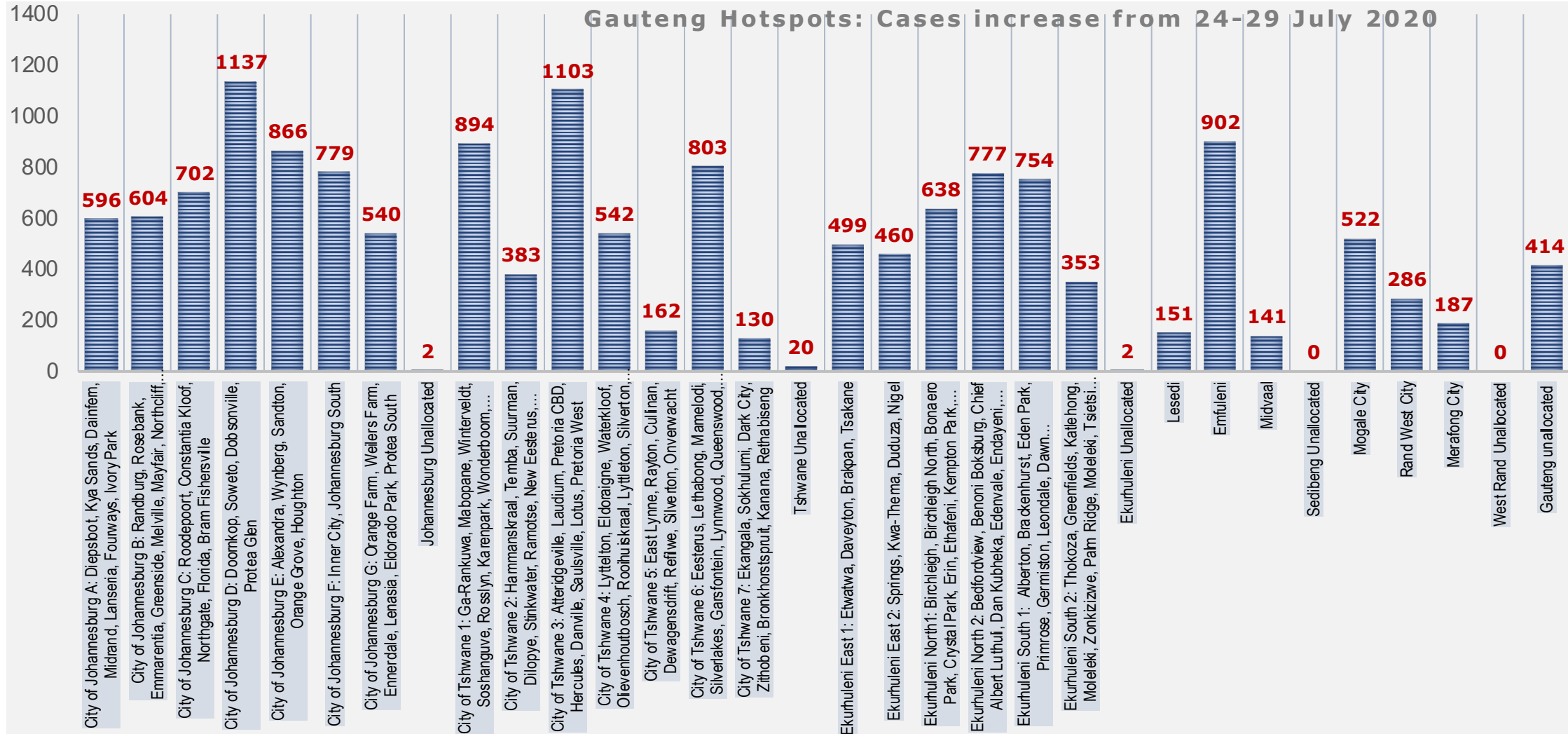


Gauteng COVID-19: Sub-district with highest number of recoveries





Gauteng sub-districts: 6 Day increase in cases per sub-district





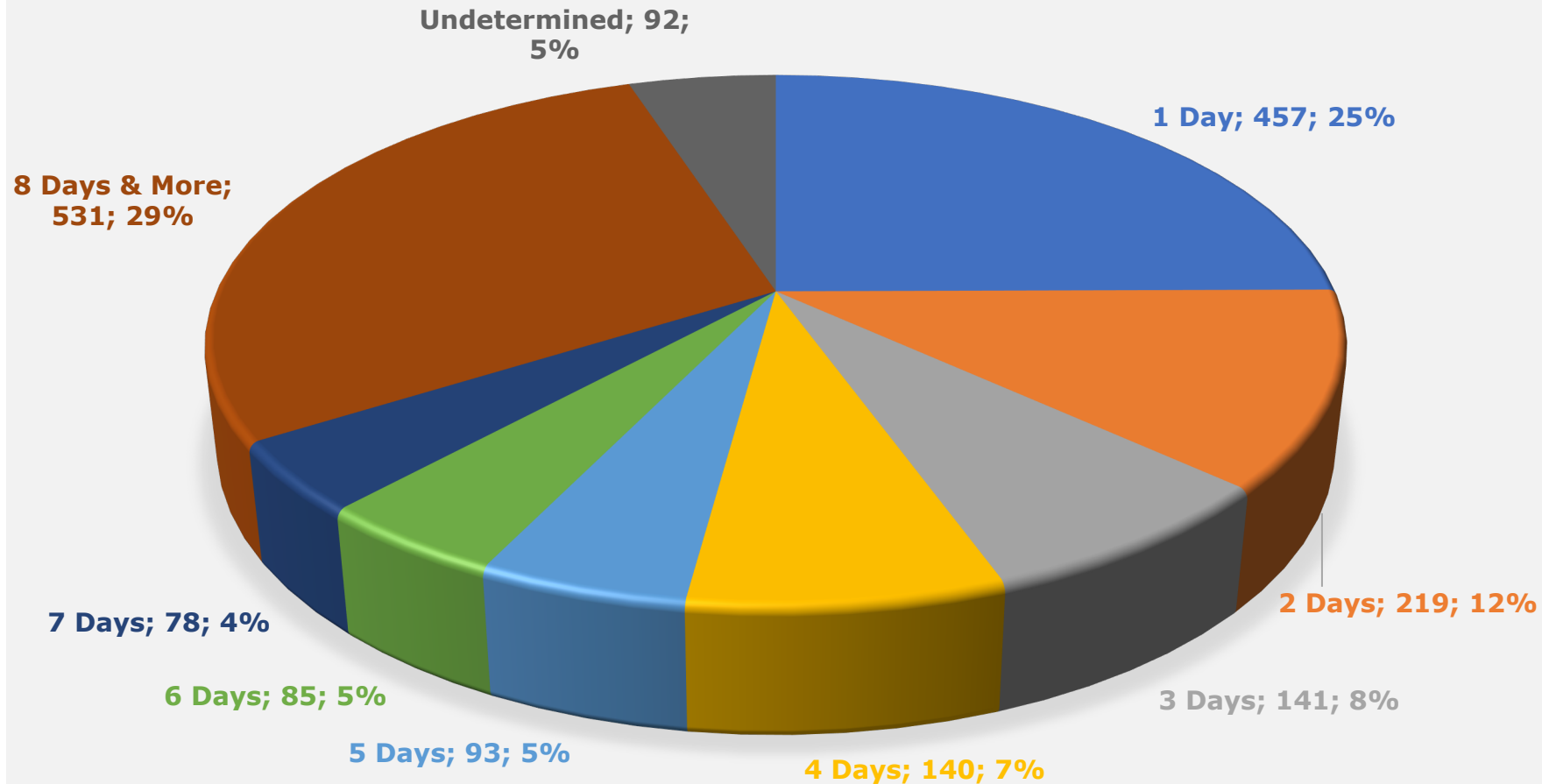
Deaths: Age and Gender Breakdown

Age	Deaths	Percentage	Male	Female	Male	Female
Unknown	30	1,6%	9	21	30%	70%
0-9	15	0,8%	9	6	60%	40%
10-19	4	0,2%	1	3	25%	75%
20-29	30	1,6%	13	17	43%	57%
30-39	97	5,3%	56	41	58%	42%
40-49	203	11,1%	110	93	54%	46%
50-59	395	21,5%	225	170	57%	43%
60-69	462	25,2%	263	199	57%	43%
70-79	350	19,1%	203	147	58%	42%
80-89	195	10,6%	95	100	49%	51%
90-99	53	2,9%	18	35	34%	66%
100-109	2	0,1%	1	1	50%	50%
	1836	100,0%	1003	833		
			55%	45%		

- There is a total of 1 836 deaths recorded so far: 1 003 (55%) Male and 833 (45%) Female.
- 1 207 (66%) between the ages of 50 and 79 - majority among these (691) being male. These are followed by the age groups 40-49 203 (11.1%), 80-89 at 195 (10.6%) and 33-39 97 (5.3%).
- 1 062 (58%) are 60 or more years old, and 744 (41%) are under 60 years of age.

Deaths Analyses: Days diagnosed/Admitted before death

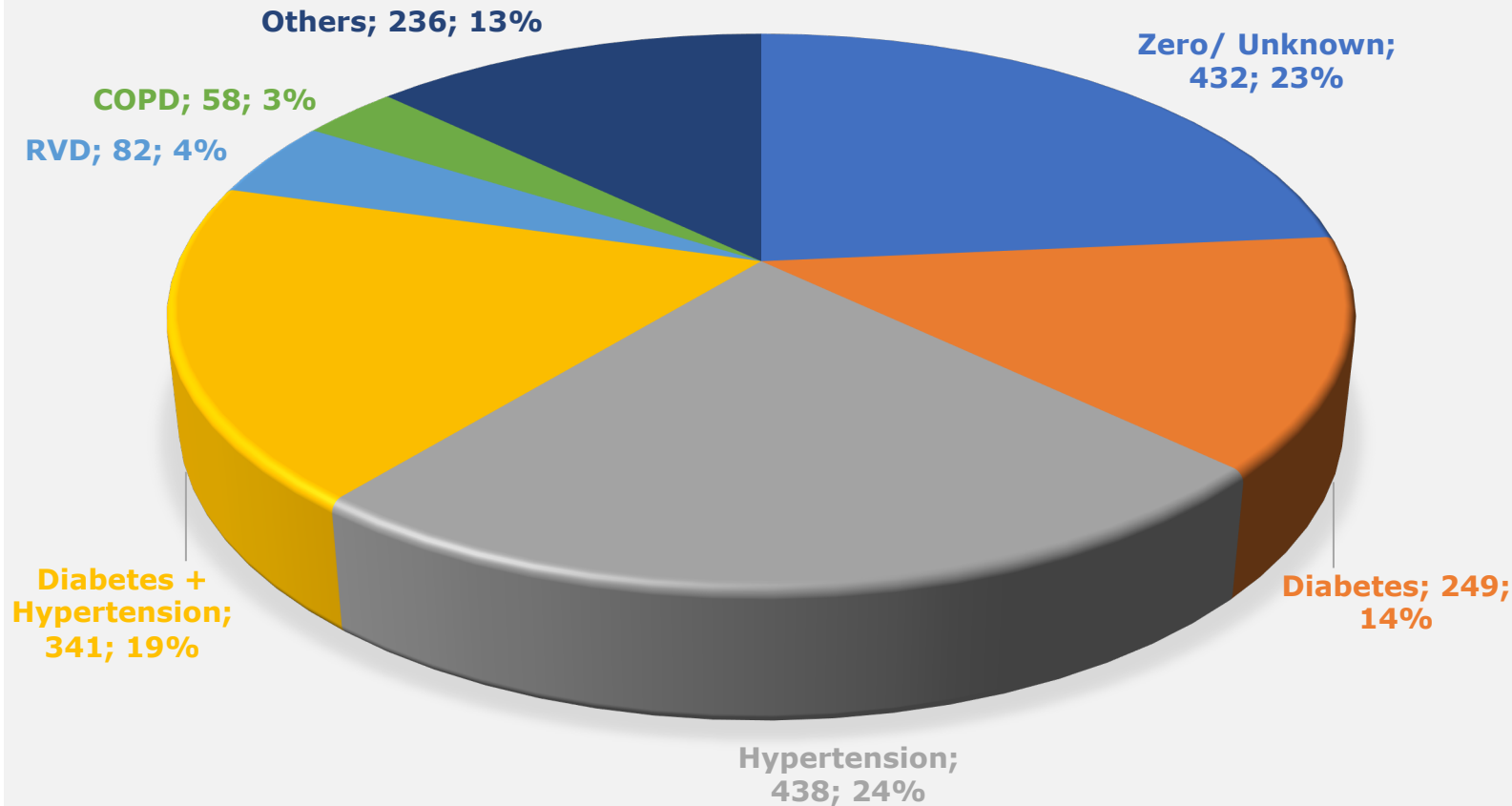
Deaths analyses: Days Diagnosed/Admitted Before Death as at 29 July 2020



- 1 213 (66%) of deaths occur within a week of diagnosis/admission:
- 817 (45%) within 3 days
- 676 (37%) within two days
- 457 (25%) within a day or hours of diagnosis/admission.
- 531 (29%) occur after a week or more of diagnoses/admission.

Deaths Analyses: Comorbidities

Deaths analyses: Comorbidities as at 29 July 2020



- 1 028 (57%) of deaths have either or both Diabetes and Hypertension, with most of these:
 - 438 (24%) – Hypertension
 - 341 (19%) – Both
 - 249 (14%) – Diabetes
- 432 (23%) have zero or unknown comorbidities, while
- 236 (13%) have other comorbidities



NHLS Provincial Testing Figures as at 29 July 2020

PROVINCE	TOTAL TESTS 30 JUNE 2020	TOTAL TESTS 9 JULY 2020	TOTAL TESTS 16 JULY 2020	TOTAL TESTS 23 JULY 2020	TOTAL TESTS 29 JULY 2020	TOTAL TESTS %
Eastern Cape	211 698	258 513	298 194	331 465	353 046	12%
Free State	88 376	106 442	124 323	146 609	165 806	6%
Gauteng	581 014	705 472	817 655	917 385	990 059	34%
Kwazulu-Natal	237 937	281 442	334 184	396 683	455 352	16%
Limpopo	31 876	38 732	44 373	51 833	58 793	2%
Mpumalanga	43 459	54 616	66 577	79 975	91 116	3%
North West	33 320	42 723	52 333	62 758	69 270	2%
Northern Cape	12 420	14 818	16 946	19 162	21 955	1%
Western Cape	337 658	379 429	413 316	447 596	473 660	16%
Unknown	89 181	118 382	157 022	178 640	194 106	7%
Grand Total	1 666 939	2 000 569	2 324 923	2 632 106	2 873 163	100%

*Source NHLS



Scenario Models

Estimating the expected # of cases	South African (NDoH) COVID-19 modelling consortium	Gauteng model (based on GP data)
Active symptomatic cases	313 000 – 400,000	419 654 -541 137
ICU beds in use at peak	8 000 - 11 000	7 973 - 10 281
Non-ICU beds in use at peak	25 000 – 30 000	54 873 -70 888
Peak period	Mid August - early Sept 2020	Early Sept 2020
Parametric assumptions		
Mild cases	95% of active cases	85% of active cases
Critical cases (ICU/High care bed)	1.16% to 1.45%	4.8%
Severe cases (general ward bed)	2.46% to 3.64%	10.2%



Additional Beds being created in existing hospitals using ABT

Facility	Target Beds	Additional Being Created
Dr George Mukhari Cluster	600 ICU beds	300 ICU beds using Alternative Building Technology at Dr George Mukhari 300 beds Alternative Building Technology at Jubilee Hospital
Chris Hani Baragwanath Cluster	800 ICU beds	500 beds Alternative Building Technology at Chris Hani Baragwanath 300 ICU beds Alternative Building Technology at Kopanong Hospital
Ashanti Gold Hospital	175 beds	Refurbishment
TOTAL	1575 beds (900 ICU and 00 general beds)	All beds to be ready by end of July.



Management of COVID-19 Positive In-patients as at 29 July 2020

Facility	Admitted	Intensive Care Unit & High Care Unit	General Ward
Public	3 232	1 252	1980
Private	2 244	637	1607
Total	5 476	1889	3587

- Currently 5476 patients are admitted in hospital, of which 1889 are in ICU and High care and 3587 in the General Ward.



Number of Gauteng Public Servants tested positive

- Out of 172 113 public servants in Gauteng, 4 205 have tested positive since March. This includes public Health workers and Educators.
- Like all other patients, affected staff and their family members are receiving care and treatment in line with the World Health Organisation protocols.
- All other staff members who were in contact with those that tested positive have been tested and will continue to follow all protocols to prevent the spread of the virus.
- There is ongoing decontamination of all public buildings regularly as part of the measures to combat the spread of COVID-19.
- As part of continuous medical surveillance protocol, public servants undergo daily screening and some are referred for testing.



PPE Stock

REPORTING	STOCK ON HAND CLOSING BALANCE	STOCK ORDERED
Body PPE	2 407 070	29 392 560
Environmental PPE	122 839	6 027 500
Face PPE	426 745	4 926 498
Hand PPE	3 421 582	42 157 900
Respiratory PPE	10 671 822	47 325 900
Tools	4 845	233 808
Grand Total	17 054 903	130 064 166

- Based on the current patient load we have adequate PPE in stock. However we continue to order more stock for the next phases of the pandemic.
- We still want to emphasise that surgical and N95 masks must be reserved for use only by frontline healthcare workers.
- Priority is on the empowerment of local manufacturing companies, SMMEs and Township businesses.
- The Department is sourcing from various service providers who are registered on the COVID-19

PPE stock



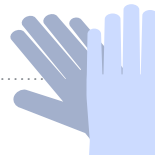
FACE PPE

Stock on hand: 426 745
Stock ordered: 4 926 498



BODY PPE

Stock on hand: 2 407 070
Stock ordered: 29 392 560



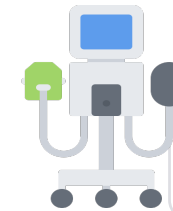
HAND PPE

Stock on hand: 3 421 582
Stock ordered: 42 157 900



RESPIRATORY PPE

Stock on hand: 10 671 822
Stock ordered: 47 325 900



TOOLS

Stock on hand: 4 845
Stock ordered: 233 808



ENVIRONMENTAL PPE

Stock on hand: 122 839
Stock ordered: 6 027 500

GRAND TOTAL

Stock on hand : 17 054 903

GRAND TOTAL

Stock ordered: 130 064 166

Food Security, Social Relief, Water, sanitation and resettlement



GAUTENG
PROVINCIAL GOVERNMENT
REPUBLIC OF SOUTH AFRICA

GGT2030
GROWING GAUTENG TOGETHER



Food Security and Social Relief – 2 Million Milestone

Food Bank	Number of Food Parcels distributed to Households	Number of people supported
Johannesburg	90 473	452 365
Tshwane	112 835	564 175
Ekurhuleni	68 862	334 310
Sedibeng	60 313	301 565
West Rand	59 790	298 950
Sub-Total	392 273	1 961 365
SSA SRD	12 329	61 645
Total	404 602	2 023 010

- Since the lockdown, **404 602** households have been provided with food relief, supporting a total of **2 023 010** people (at least 5 people per household).
- **368 175 calls** received with an overall response rate of **109%**.
- However, the demand for food far outstrips our capacity to meet the need.
- We continue to call for more support from business, foundations and civil society initiatives on food relief. However, such initiatives must be coordinated with government and the distribution should avoid breaching social distancing regulations.
- **Food Distribution (National Picture):** GPG accounts for **42.6%** of the total Social Development Food Relief distribution across the country, followed by **LP** at **12.9%**, **MP** and **WC** at **9.8%** each.



Status of Shelters for Homeless People

Region	Capacity	Currently in the Shelter receiving meals
Johannesburg	1964	717
Ekurhuleni	584	121
Tshwane	2465	1 563
Sedibeng	232	61
West Rand	561	125
Totals	5 806	2 587

- We are providing temporary shelter to the Homeless in **47** Shelters across the Province, working with municipalities.
- **2 587** homeless people are provided with 3 meals on a daily basis plus psychosocial support, medical assessments and treatment for substance abuse.
- **527** homeless beneficiaries have absconded from shelters to return to the streets.
- **520** have self-discharged themselves.
- **346** people were re-united with families from April – 10 July 2020.
- **307** people have been sent to Rehabilitation Centres for substance use disorders.

School nutrition programme

- The School nutrition programme covers all learners in line with the Court Order.
- Feeding at schools is done on a staggered approach during different times. Learners are asked to bring their own containers from home.
- Learners have been asked to wear their uniforms to be easily recognisable and face masks.
- The programme covers 1 329 987 learners daily.
- We can safely confirm that the programme is going very well.

Update on PPE investigation



GAUTENG
PROVINCIAL GOVERNMENT
REPUBLIC OF SOUTH AFRICA

GGT2030
GROWING GAUTENG TOGETHER



Update on investigation into PPE procurement

- Clean governance has been one of the hallmarks of the Gauteng Provincial Government (GPG) during the 5th and 6th administration.
- This led to the introduction of the Open Tender system which significantly improved transparency, accountability and increased the number of clean audits achieved by various departments and entities of the GPG over a 5-year period.
- The campaign against corruption was strengthened through the appointment civil society-led Gauteng Ethics and Anti-Corruption Advisory Council.
- In March, National Cabinet declared a state of Disaster in response to COVID-19.
- The damning allegations of corruption regarding the procurement of Personal Protective Equipment have profoundly eroded public confidence in the collective work of the province in the fight against COVID-19.

Update on investigation into PPE procurement

- As part of our monitoring and evaluation on procurement spend, the Gauteng Audit Services (GAS) conducts regular internal auditing of our procurement processes.
- Health MEC Dr Bandile Masuku and HOD Prof Lukhele requested the GAS to do an audit of PPE procurement in April.
- In May, the Gauteng Audit Services conducted an internal audit on the PPE procurement done by the Department of Health and raised concerns about a lack of compliance with regulations. GAS recommended a thorough probe which could only be dealt with through a proper forensic investigation.
- The Premier and MEC Masuku decided to refer the matter to the SIU and the SIU commenced their investigations at the end of May 2020.
- Initially, there were 91 companies that were identified for investigation, but the number has since increased to 102 companies. All these companies were awarded contracts to provide a range of goods in the fight against COVID-19.

Update on investigation into PPE procurement

- The President has since signed a proclamation authorising the investigation into all COVID-19 procurement.
- In the meantime, PPE purchase orders of R1 billion have been stopped and are being cancelled.
- If in the course of investigations, evidence of wrong-doing is found, the SIU will refer such evidence to relevant authorities including the SAPS, NPA and SARS.
- The SIU may also recommend immediate action to be taken against any implicated officials.
- The SIU may also recommend immediate steps to safe-guard state assets which may include cancellation of contracts.
- On the basis of the findings by GAS, we are strengthening our oversight systems.

Concluding remarks



GAUTENG
PROVINCIAL GOVERNMENT
REPUBLIC OF SOUTH AFRICA



Containing the spread! Saving lives!

- Containing the spread of the virus and saving lives remains the focus of our comprehensive health response to the COVID-19 pandemic.
- All spheres of government, community organisation and civil society are collaborating to contain the spread of COVID-19.
- All social partners are working together as part of the ward-based strategy to minimise community transmission through:
 - Identification of positive cases and expeditiously tracking and tracing contacts
 - Administering medical management to those who need it
 - Decongesting clinics
 - Referring people to quarantine and isolation sites based on assessment
 - Heightening awareness and education
- To date, more than 2500 beds have been added in hospitals and plans are on track to add 5 000 more beds.
- SANDF has a footprint in 15 hospitals across the province with 506 members deployed in these facilities helping with a wide array of services.

Concluding remarks

- As we continue with the battle against the pandemic let us continue to work together as a collective ensure that we curb the spread of the virus.
- Through wearing masks, practicing physical distancing and observing the hygiene golden rules of washing hands or using sanitisers we can protect ourselves and those around us.
- Adherence to these measures demonstrates our commitment and contribution to curbing the spread of the virus.
- We have come a long way in this battle against the pandemic, let us soldier on and we shall indeed overcome.
- **Play your part. Stop the Spread!”**



Mpilo – Healthcare in your hands



MPILO APP – HEALTH CARE IN YOUR HANDS

Download the **MPILO APP** for convenient and simple COVID-19 self-screening. The **MPILO APP** is available for free on the **APP Store** and **Google play store**. Access the Mpilo App through **USSD dial *134*227#** and follow the prompts

Be the change. Stop the Spread



GAUTENG
PROVINCIAL GOVERNMENT
REPUBLIC OF SOUTH AFRICA

GGT2030
GROWING GAUTENG TOGETHER

THANK YOU