



Gauteng Province

**BUDGET BOOKLET** | 2023



**GAUTENG**  
PROVINCIAL GOVERNMENT  
REPUBLIC OF SOUTH AFRICA

**GGT2030**  
GROWING GAUTENG TOGETHER

# Table of Contents

**English**

**Pg. 2**

**Afrikaans**

**Pg. 15**

**isiZulu**

**Pg. 26**

**Sepedi**

**Pg. 37**

Gauteng Budget 2021/22 – Foreword	2	15	26	37
The Priorities of the Growing Gauteng Together 2030 Plan	4	17	28	39
Sources of our Budget	5	18	29	40
Own Revenue	6	19	30	41
Conditional Grants	7	20	31	42
Provincial Spending	8	21	32	43
• Function				
• Economic Classification				
• Spending on Personnel	9	22	33	44
Spending on Social Services	10	23	34	45
Spending on Infrastructure	11			
Elevated Priorities	13	24	35	46
Where have we increased our spending?	14	25	36	47
Spatial Referencing of the Infrastructure Budget	48	48	48	48
General Information	52	52	52	52
• Access to Information				

# Foreword: Gauteng Budget 2023/24



**Mr. Jacob Mamabolo**

Gauteng MEC for Finance

Gauteng's economy is on the road to recovery after the Covid -19 pandemic, and the 2023 Medium-Term Budget has been crafted to operate within an economically constrained environment. As South Africa's economic hub, Gauteng is responsible for ensuring that the budget is contributing to economic recovery and impactful on service delivery. As the current political term comes to an end, it is essential to make concerted efforts to ensure that provincial elevated priorities are resourced, and set targets are met.

In preparation for this budget, all Gauteng Provincial Government departments and the entities worked together to ensure that commitments and promises were prioritised. Robust planning engagements were embarked upon and planning instruments were reviewed and recrafted to reflect the continued government commitment to serving the people of Gauteng. In doing so, the province continues to focus on "Growing Gauteng Together", with priority given to the following elevated priorities to achieve increased socio-economic impact:

- Accelerating Gauteng's economic recovery and reconstruction;
- Declaring crime, corruption, lawlessness, and vandalism as the enemy that will be mercilessly dealt with;
- Drastically changing the living conditions of people people in townships, informal settlements, and provincially owned hostels;
- Strengthening the government's capacity to deliver quality services, and improving government communications to better communicate with the residence of Gauteng, and
- Improving the health and wellness of communities.

The 2023/24 Medium Term Budget demonstrates the government's unwavering commitment to prioritise the people of Gauteng. This budget aims to change the landscape of public service delivery, do more for the most vulnerable members of society, and build confidence in attracting more economic investment to Gauteng, where businesses will be safe, people will engage in their activities without fear, knowing that the Gauteng Provincial Government and its partners are working together to create a conducive environment.

Everyone has been affected, directly or indirectly, by crime. The budget confronts the urgency with which the Gauteng provincial government will be resourced to respond accordingly. It is our assurance that this government will be at the forefront, making Gauteng a first choice to live in, invest, and do business.

A handwritten signature in black ink, consisting of a large, stylized 'M' followed by a long horizontal stroke that tapers to the right.

Jacob Mamabolo  
MEC: Finance



# Elevated Priorities

**1**

Economic recovery and reconstruction

**2**

Strengthening the battle against crime, vandalism, corruption & lawlessness

**3**

Health and Wellness Programmes (health, education and social)

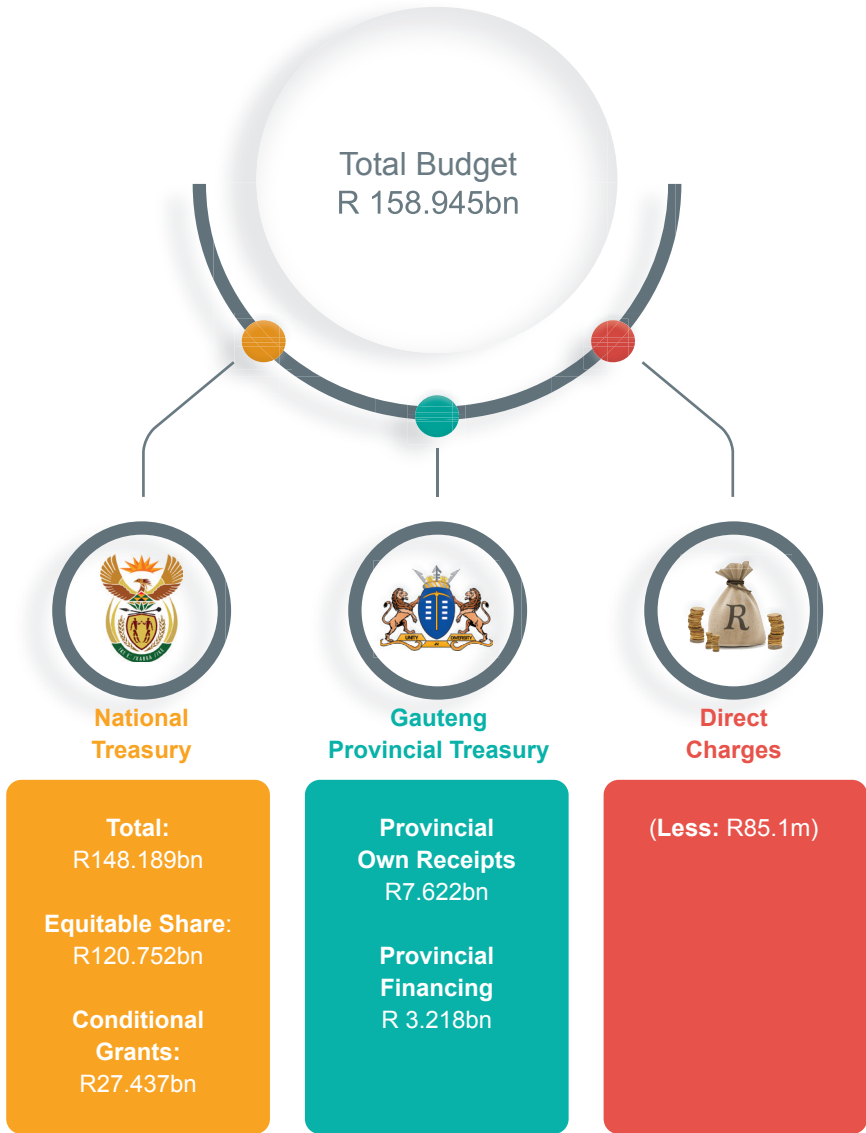
**4**

Changing the living conditions in Townships, Informal Settlements and Hostels (TISH)

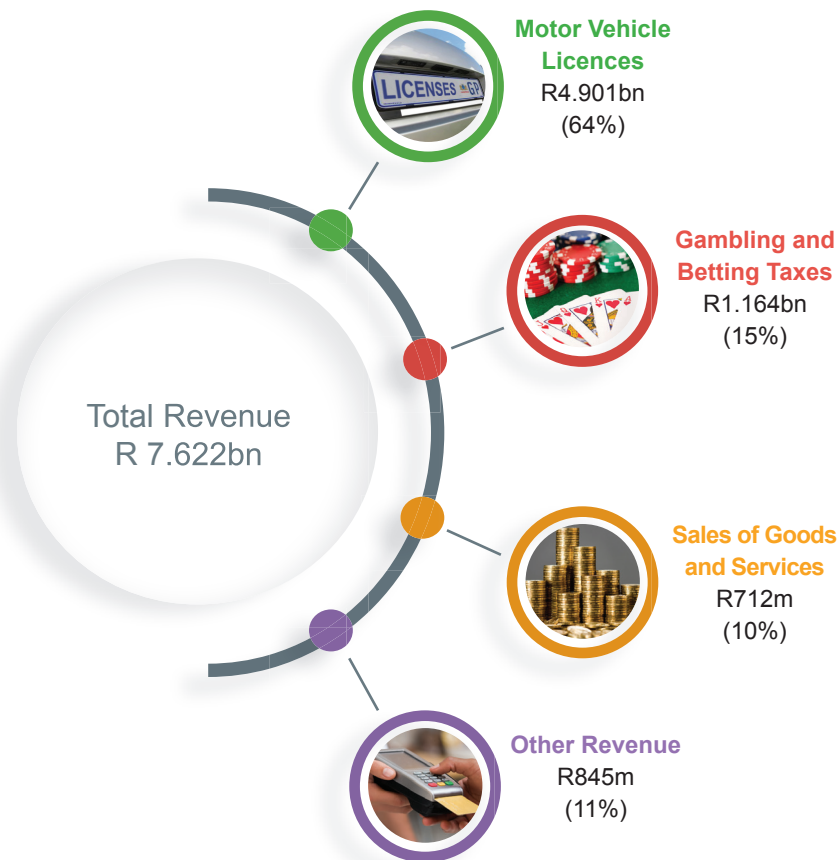
**5**

Strengthening the capacity of the state

# Sources of Our Budget



# Own Revenue

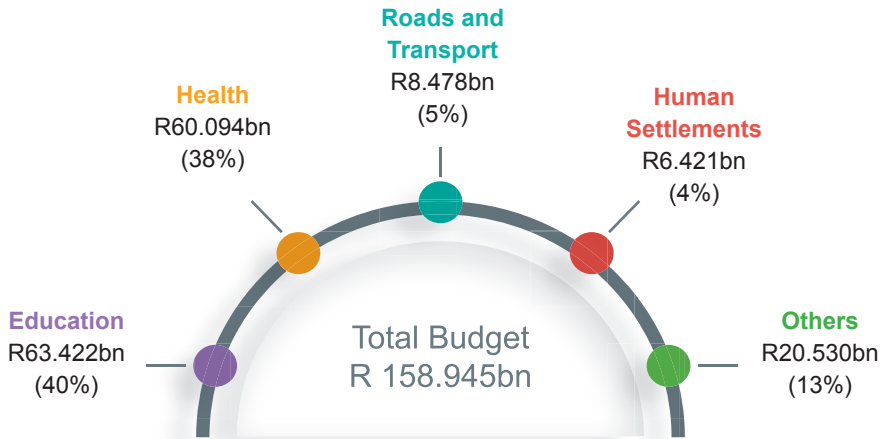


**Other revenue** consists of fines, penalties and forfeits; interest; and financial transaction in assets and liabilities.

# Conditional Grants

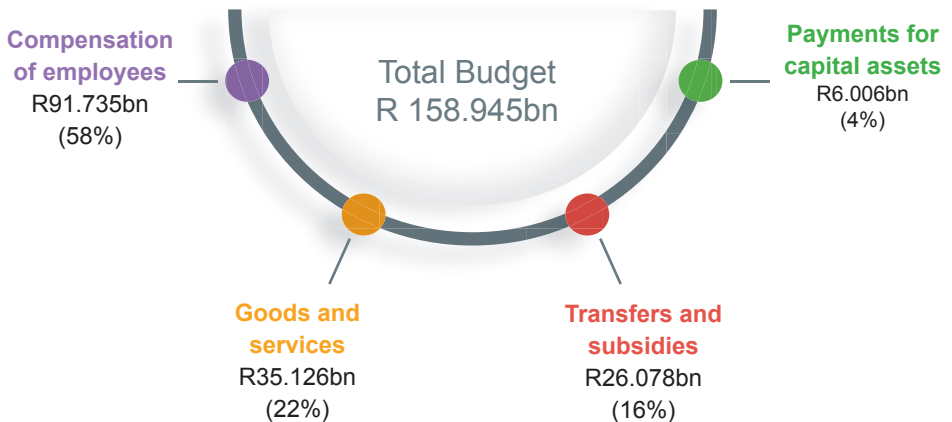


# Provincial Spending



Function

## Economic Classification



# Spending on Personnel



**Others** consists of: Economic Development; Cooperative Governance and Traditional Affairs; Human Settlements; Roads and Transport; Agriculture and Rural Development; Sport, Arts, Culture and Recreation; e-Government; Provincial Treasury and Office of the Premier

# Spending on Social Services

## EDUCATION



Public Ordinary School Education R44.553bn  
 Public Special School Education R5.249bn  
 Examination and Education Related Services R2.679bn  
 Early Childhood Development R2.329bn  
 Other R8.612bn

## HEALTH



Central Hospital Services R21.762bn  
 District Health Services R20.138bn  
 Provincial Hospital Services R11.357bn  
 Health Facilities Management R1.918bn  
 Other R4.918bn

## SOCIAL DEVELOPMENT



Children and Families R1.965bn  
 Social Welfare Services R667.1m  
 Research and Development R1.240bn  
 Restorative Services R959.9m  
 Other R718.4m

**Total Social Services = R 129.066bn**

---

# Spending on Infrastructure



**Others** consist of: Social Development; Sport, Arts, Culture and Recreation; Infrastructure Development and Agriculture and Rural Development.



## Spending on Infrastructure



**Health**  
R1.803bn

*Improving quality of health care.*

**Central Corridor**

R538m

**Eastern Corridor**

R5m

**Northern Corridor**

R83.9m

**Southern Corridor**

R305.1m

**Western Corridor**

R15m

**Across various Corridors**

R829.8m



**Education**  
R2.463bn

*Improving quality of education.*

**Central Corridor**

R497.5m

**Eastern Corridor**

R294m

**Northern Corridor**

R437.4m

**Southern Corridor**

R110.8m

**Western Corridor**

R165.6m

**Across various Corridors**

R958.1m



**Roads and Transport**  
R1.778bn

*Improving roads and linkage in the province.*

**Central Corridor**

R470.4m

**Eastern Corridor**

R57.8m

**Northern Corridor**

R379.9m

**Southern Corridor**

R112.1m

**Western Corridor**

R6.6m

**Across various Corridors**

R1.069bn



**Human Settlements**  
R5.464bn

*Improving quality of household life.*

**Central Corridor**

R729.8m

**Eastern Corridor**

R483.5m

**Northern Corridor**

R166m

**Southern Corridor**

R1.097bn

**Western Corridor**

R1.965bn

**Across various Corridors**

R1.022bn

# Elevated Priorities



# Where have we increased our Spending?

DEPARTMENT	ADJUSTMENT APPROPRIATION 2022/23	MAIN APPROPRIATION 2023/24	% CHANGE 2022/23-2023/24
Health	61 351 417	60 093 535	-2%
Education	59 989 655	63 421 638	6%
Social Development	5 537 037	5 550 806	0%
Roads and Transport	8 582 136	8 478 597	-1%
Human Settlements	6 607 739	6 421 222	-3%
Community Safety	1 374 065	2 706 192	97%
<b>Other</b>	11 905 576	12 273 092	3%
<b>Total provincial payments and estimates</b>	<b>155 347 625</b>	<b>158 945 081</b>	<b>2%</b>
<b>Social</b>	<b>126 878 109</b>	<b>129 065 979</b>	<b>2%</b>
<b>Non Social</b>	<b>28 469 516</b>	<b>29 879 103</b>	<b>5%</b>
<b>Total Appropriation</b>	<b>155 347 625</b>	<b>158 945 081</b>	<b>2%</b>

**Other** consists of: Economic Development; Cooperative Governance and Traditional Affairs; Community Safety; Agriculture and Rural Development; Sport, Arts, Culture and Recreation; e-Government; Provincial Treasury and Office of the Premier

# Voorwoord: Gauteng Begroting 2023/24



**Mnr. Jacob Mamabolo**

Gauteng LUR vir Financies

Gauteng se ekonomie is op die herstpeld na die Covid-19-pandemie, en die 2023-mediumtermynbegroting is saamgestel om in 'n ekonomies beperkte omgewing te werk. As Suid-Afrika se ekonomiese kern, is Gauteng daarvoor verantwoordelik om te verseker dat die begroting bevorderlik is vir ekonomiese herstel en 'n groot impak het op dienslewering. Soos wat die huidige politieke termyn tot einde kom, is dit noodsaaklik om daadwerklike pogings aan te wend om te verseker dat provinsiale verhoogde prioriteite befonds word en dat gestelde doelwitte bereik word.

Ter voorbereiding van hierdie begroting het al die departemente van die Gauteng Provinsiale Regering en die entiteite saamgewerk om te verseker dat alle verpligtinge en beloftes geprioritiseer word. Ernstige beplanningssessies is gehou en beplanninginstrumente is hersien en weer opgestel om die volgehoue regeringsverbintenisse tot diens van die mense van Gauteng te reflekteer. Hiermee fokus die provinsie steeds op "Groeï Gauteng Tesame", met prioriteit wat verleen word aan die volgende verhoogde prioriteite ten einde verhoogde sosio-ekonomiese impak te behaal:

- Versnel Gauteng se ekonomiese herstel en heropbou;
- Verklaar misdaad, korrupsie, wetteloosheid en vandalisme as die vyand wat genadeloos aangepak sal word;
- Verander die lewensomstandighede van mense in townships, informele nedersettings en hostelle in die provinsie se besit drasties;
- Versterk die regering se kapasiteit om gehaltesdiens te lewer, en regeringskommunikasie te verbeter ten einde beter met die inwoners van Gauteng te kommunikeer; en
- Verbeter die gesondheid en welsyn van gemeenskappe.

Die 2023/24-mediumtermynbegroting demonstreer die regering se onwrikbare toewyding tot die prioritisering van die mense van Gauteng. Hierdie begroting het ten doel om die landskap van openbare dienslewering te verander, meer te doen vir die kwesbaarste lede van ons samelewing, en vertroue te bou om meer ekonomiese belegging na Gauteng te lok, waar ondernemings veilig sal wees, mense sonder vrees hul bedrywighede kan voortsit in die wete dat die Gautengse provinsiale regering en sy vennote saamwerk om bevorderlike omgewing te skep.

Almal word – direk of indirek – geraak deur misdaad. Die begroting konfronteer die dringendheid waarmee die Gautengse provinsiale regering befonds sal word om dienooreenkomstig op te tree. Dit is ons versekering dat hierdie regering die voortou sal neem om sodoende Gauteng die eerste keuse te maak vir waar mense wil woon, wil belê en besigheid wil doen.



Jacob Mamabolo  
LUR: Finansies

# Verhoogde prioriteite

**1**

Ekonomiese herstel en heropbou

**2**

Verskerp die stryd teen misdaad, vandalisme, korrupsie en wetteloosheid

**3**

Gesondheid en Welsyns-programme (gesondheid, opvoeding en maatskaplik)

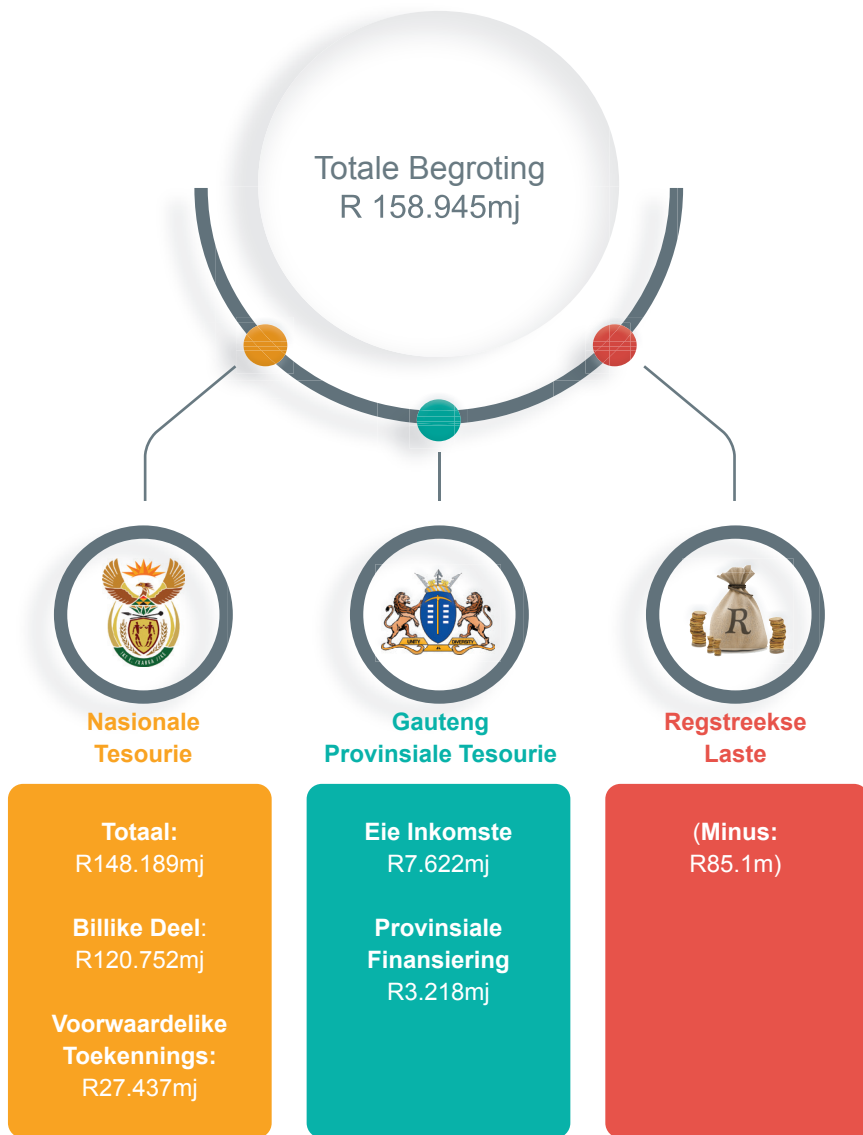
**4**

Verander lewensomstandighede in townships, informele nedersettings en hostelle (TINH)

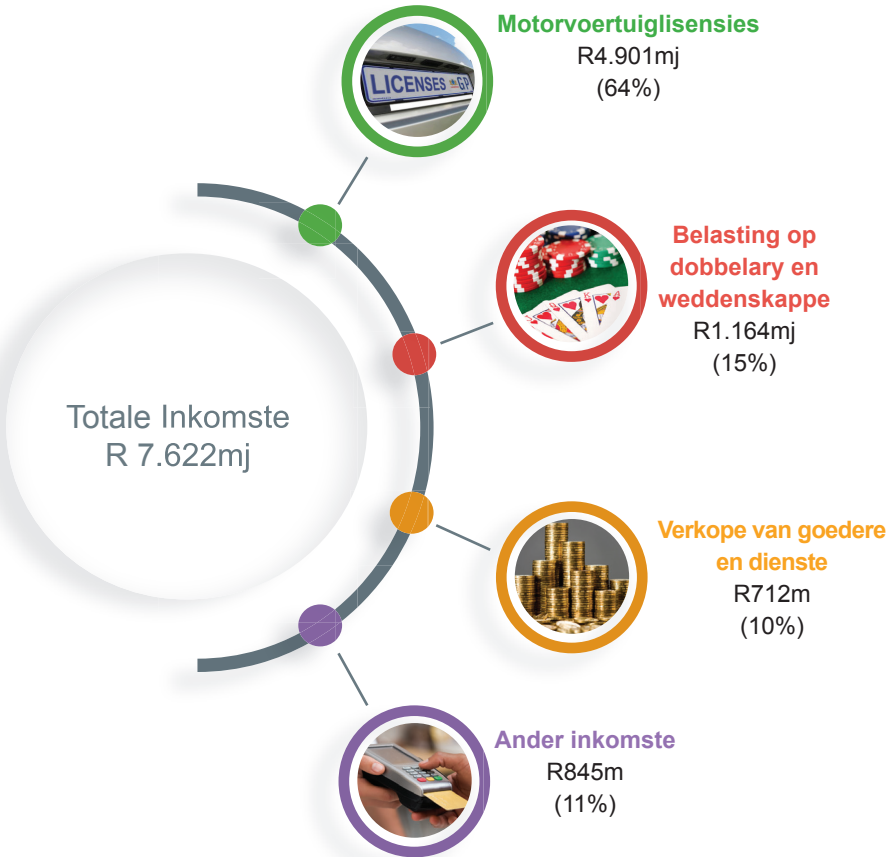
**5**

Versterk die kapasiteit van die staat

# Bronne van ons Begroting



# Eie Inkomste



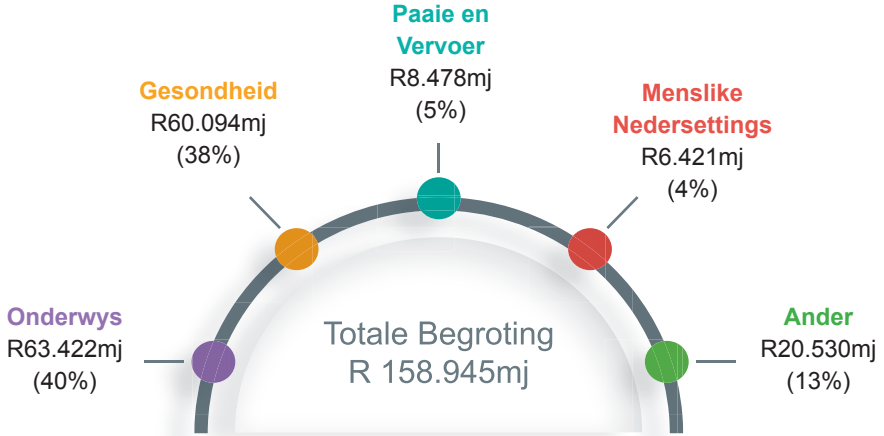
**Ander inkomste** bestaan uit boetes, strawwe en verbeurings; rente; en finansiële transaksies in bates en laste.



# Voorwaardelike Toekennings

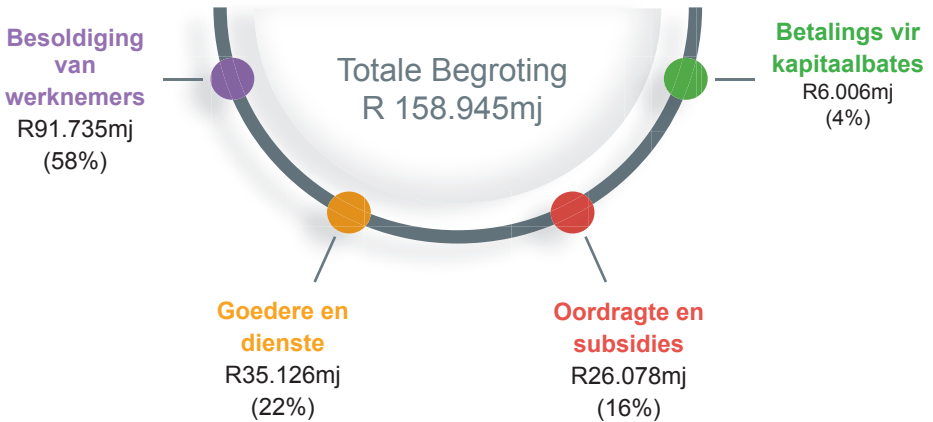


# Provinsiale Besteding



## Funksie

## Ekonomiese Klassifikasie



# Besteding aan Personeel



**Ander** bestaan uit: Ekonomiese Ontwikkeling; Samewerkende Regering en Tradisionele Sake; Menslike Nedersettings; Paaie en Vervoer; Landbou en Landelike Ontwikkeling; Sport, Kuns, Kultuur en Rekreasie; e-Regering; Provinsiale Tesourie en Kantoor van die Premier

# Besteding aan Maatskaplike Dienste

## ONDERWYS



Openbare Gewone Skoolonderwys R44.553mj  
 Openbare Spesiale Skoolonderwys R5.249mj  
 Eksamen- en onderwysverwante dienste R2.679mj  
 Vroeë Kinderontwikkeling R2.329mj  
 Ander R8.612mj

## GESONDHEID



Sentrale Hospitaaldienste R21.762mj  
 Distriksgesondheids-dienste R20.138mj  
 Provinsiale Hospitaaldienste R11.357mj  
 Hervitalisering vir Gesondheidsfasiliteit R1.918mj  
 Ander R4.918mj

## MAATSKAPLIKE ONTWIKKELING



Kinders en Gesinne R1.965mj  
 Maatskaplike Welsynsdienste R667.1m  
 Ontwikkeling en Navorsing R1.240mj  
 Restoratiewe Dienste R959.9m  
 Ander R718.4m

**Totale Maatskaplike Dienste = R 129.066mj**

---

# Verhoogde prioriteite



## 2. Verskerp die stryd teen misdaad, vandalisme, korrupsie en wetteloosheid:

- Misdaadvoorkomings-beamptes R1.438mj
- CCTV R50m
- Hommeltuie R31.4m



- ## 3. Gesondheid en Welsyns-programme (gesondheid, opvoeding en maatskaplik):
- R1.656mj



## 1. Ekonomiese herstel en heropbou:

- SES-uitbreiding R272.4m
- Industriële parke R62m



## 5. Versterk die kapasiteit van die staat:

- Handelsmerk-herposisionering R142.7m
- Kontaksentrum R93.2m



## 4. Verander lewensomstandighede in townships, informele nedersettings en hostelle (TINH):

- Hostelherontwikkeling R322m
- Bontle ke Botho Program R22m

# Waar het ons ons besteding verhoog?

DEPARTEMENT	AANSUIWERINGS- BEGROTING 2022/23	HOOFBEGROTING 2023/24	% VERANDERING 2022/23-2023/24
Gesondheid	61 351 417	60 093 535	-2%
Onderwys	59 989 655	63 421 638	6%
Maatskaplike Ontwikkeling	5 537 037	5 550 806	0%
Paaie en Vervoer	8 582 136	8 478 597	-1%
Menslike Nedersettings	6 607 739	6 421 222	-3%
Gemeenskaps- veiligheid	1 374 065	2 706 192	97%
<b>Ander</b>	11 905 576	12 273 092	3%
<b>Totale Provinsiale Betalings en Ramings</b>	<b>155 347 625</b>	<b>158 945 081</b>	<b>2%</b>
<b>Maatskaplik</b>	<b>126 878 109</b>	<b>129 065 979</b>	<b>2%</b>
<b>Niemaatskaplik</b>	<b>28 469 516</b>	<b>29 879 103</b>	<b>5%</b>
<b>Totale Begroting</b>	<b>155 347 625</b>	<b>158 945 081</b>	<b>2%</b>

**Ander** bestaan uit: Ekonomiese Ontwikkeling; Samewerkende Regering en Tradisionele Sake; Gemeenskapsveiligheid; Landbou en Landelike Ontwikkeling; Sport, Kuns, Kultuur en Rekreasie; e-Regering; Provinsiale Tesourie en Kantoor van die Premier.

# Isandulela: Isabelomali SaseGauteng 2023/24



**Jacob Mamabolo**

UNgqongqoshe: Wezezimali

Umnotho waseGauteng uya ngokuya usimama ngemva kobhubhane lwe-Covid -19, futhi iSabelomali Saphakathi Nonyaka Sika-2023, sihlelwe ngendlela yokuba sikwazi ukusebenza kulesi simo sezomnotho esinzima. Njengoba iGauteng iwumgogodla womnotho waseNingizimu Afrika, inomthwalo wokuqikelela ukuthi isabelomali siyakuvumela ukusimama komnotho futhi siba negalelo ekuhlinzekweni kwamasevisi. Njengoba le nkathi yokuphatha kwezepolitiki ifinyelela esiphethweni sayo, kusemqoka ukwenza imizamo yobumbano ukuze kuqinisekise ukuthi izinto ezibaluleke kakhulu esifundazweni zihlinzekwa ngazo izidingo zazo, nokuthi imigomo ebekiwe iyafinyelelwa.

Lapho ilungiselela lesi sabelomali, yonke iminyango kaHulumeni Wesifundazwe saseGauteng nezinhlaka kusebenze ngokubambisana ukuze kuqinisekise ukuthi ukuzibophezela nezithembiso kufezwa ngokushesha. Kwaba nezingxoxo zokuhlela ezinomdlandla futhi kwahlolisiswa namathuluzi okwenza izinhlelo aphinde abuyekwezwa ukuze abonise ukuzinikela okuqhubekayo kukahulumeni ukunakakela izidingo zabantu baseGauteng. Ngokwenza kanjalo, isifundazwe siyaqhubeka sigxile esiqubulweni esithi “Sikhulisa iGauteng Ndawonye”, izinto ezibekwe phambili yilezi ezilandelayo ezizoba negalelo ekuthuthukiseni ezenhlalo nezomnotho:

- Ukusheshisa ukusimama komnotho wase Gauteng nokwakha kabusha;
- Ukubheka ubugebengu, inkohlakalo, ukungabi namthetho nokucekela phansi impahla njengesitha okufanele kuliwe naso ngaphandle kwesihe;
- Ukuguqula izimo zempilo yabantu abahlala emalokishini, emikhukhwini nasemahostela aphethwe yisifundazwe;
- Nokuthuthukisa impilo nehlalakahle yemiphakathi, kanye
- Ukuhlomisa uhulumeni ukuze akwazi ukuhlinzeka ngamasevisi ezinga

eliphezulu, nokuthuthukisa ukuxhumana kuhulumeni ukuze kuxhunywane kangcono nabahlali baseGauteng.

ISabelomali Saphakathi Nonyaka sika-2023/24 sibonisa ukuzimisela kukahulumeni okungantengantengi ekubekeni abantu baseGauteng phambili. Lesi sabelomali sihlose ukuguqula indlela okuhlinzekwa ngayo izidingo zomphakathi, ukwenzela amalungu omphakathi aswele okwengeziwe, nokwakha ukuzethemba ekuheheni abatshali-zimali abengeziwe eGauteng, lapho amabhezini ezophepha khona, abantu bazokwenza imisebenzi yabo ngaphandle kokwesaba, bazi ukuthi uHulumeni WeSifundazwe SaseGauteng nalabo obambisene nabo basebenza ndawonye ukwakha isimo esingcono.

Wonke umuntu bumchaphazele ubugebengu ngandlela thile. Lesi sabelomali siqaphela ukuphuthuma kwezinto ngendlela uhulumeni wesifundazwe saseGauteng azohlonyiswa ngayo ukuba athathe izinyathelo ezifanele. Siyaqinisekisa ukuthi lo hulumeni ngeke usonge izandla kepha uzophuma inqina, wenze iGauteng ibe yindawo yokuqala abantu abakhetha ukuhlala kuyo, ukutshala kuyo izimali nokwenza ibhezini kuyo.



Jacob Mamabolo  
UNgqongqoshe: Wezezimali



# Izinto Eziphuthuma Kakhulu

**1**

Ukusheshisa ukusimama komnotho wase Gauteng nokwakha kabusha

**2**

Ukubheka ubugebengu, inkohlakalo, ukungabi namthetho nokucekela phansi impahla njengesitha okufanele kuliwe naso ngaphandle kwesihe

**3**

Ukuguqula izimo zempilo yabantu abahlala emalokishini, emikhukhwini nasemahostela aphethwe yisifundazwe

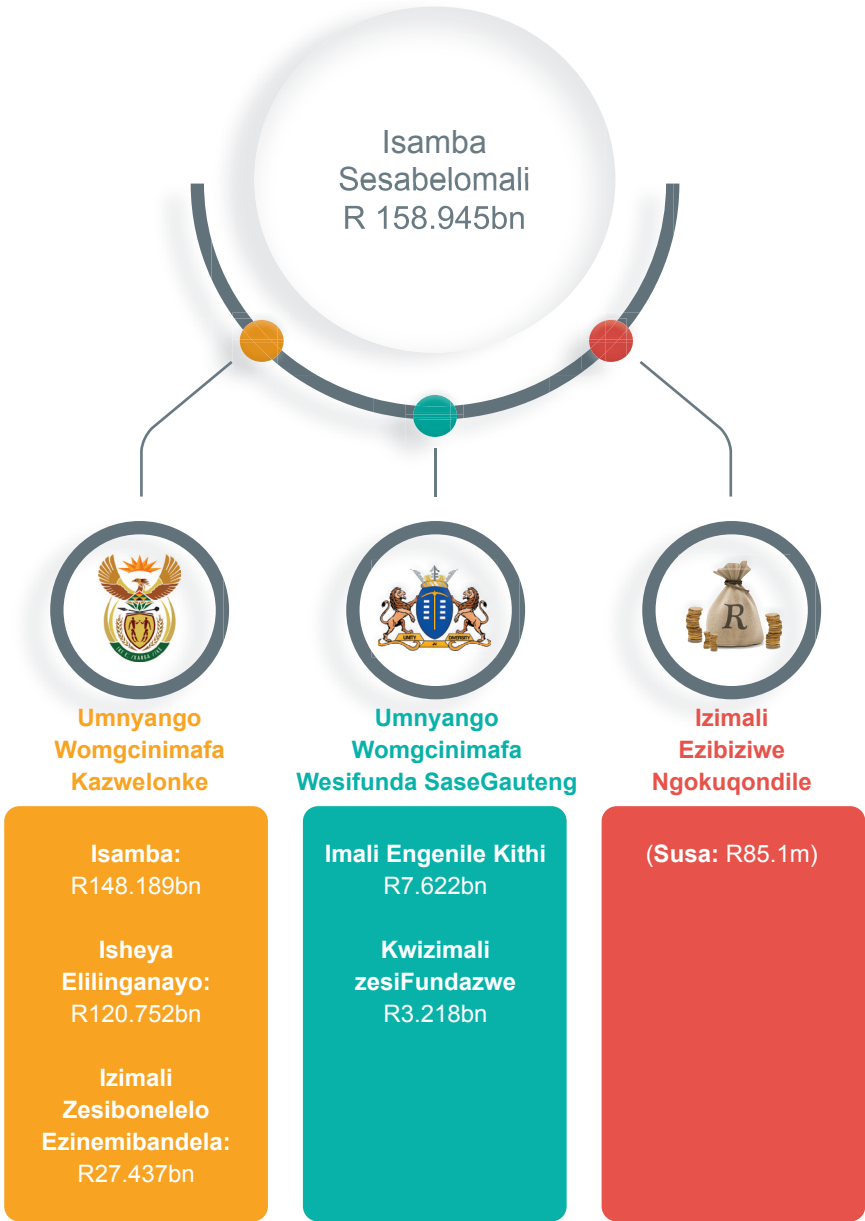
**4**

Nokuthuthukisa impilo nehlalakahle yemiphakathi, kanye

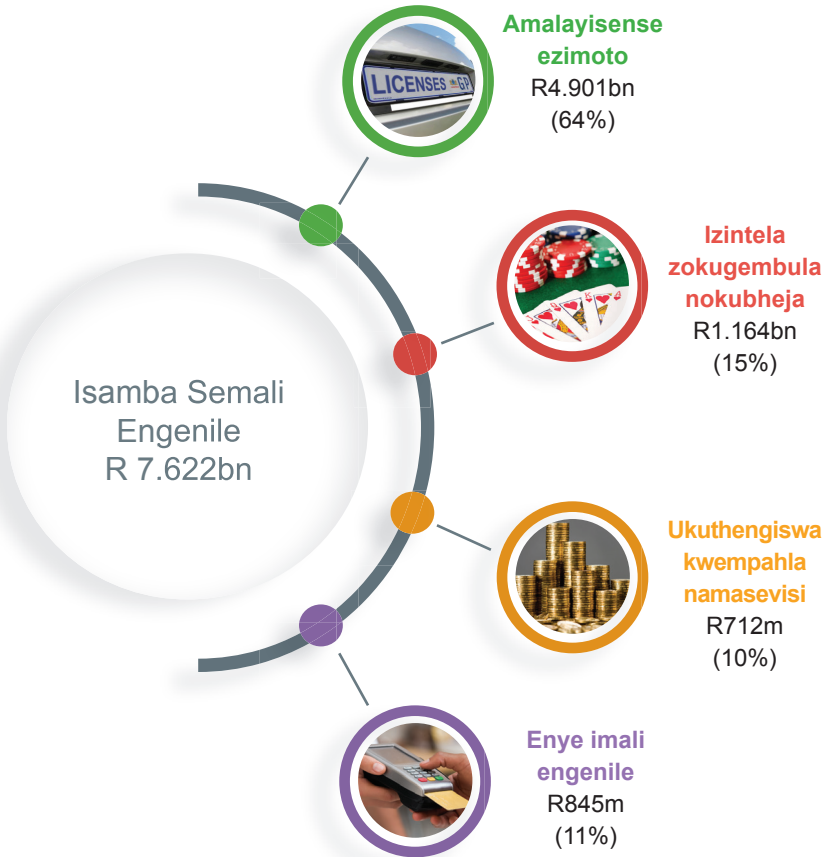
**5**

Ukuhlomisa uhulumeni ukuze akwazi ukuhlinzeka ngamasevisi ezinga eliphezulu, nokuthuthukisa ukuxhumana kuhulumeni ukuze kuxhunywane kangcono nabahlali baseGauteng

# Imithombo Yesabelomali Sethu



# Imali Engenile Kithi

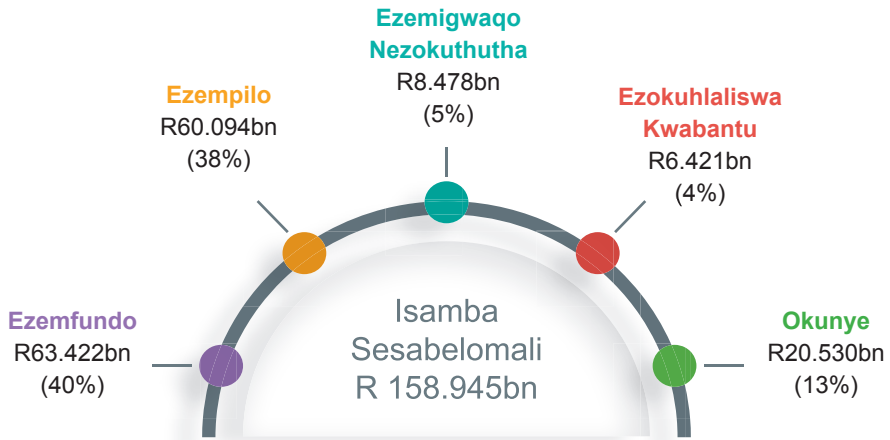


**Ezinye izimali ezingenile** zihlanganisa imali yokuhlawula, izijeziso nokuthathwa kwezinto; inzalo; nokukhokhwa kwezimali zempahla nezikweletu.

# Izinhlelo Zoxhaso Lwezempilo Lwesifunda

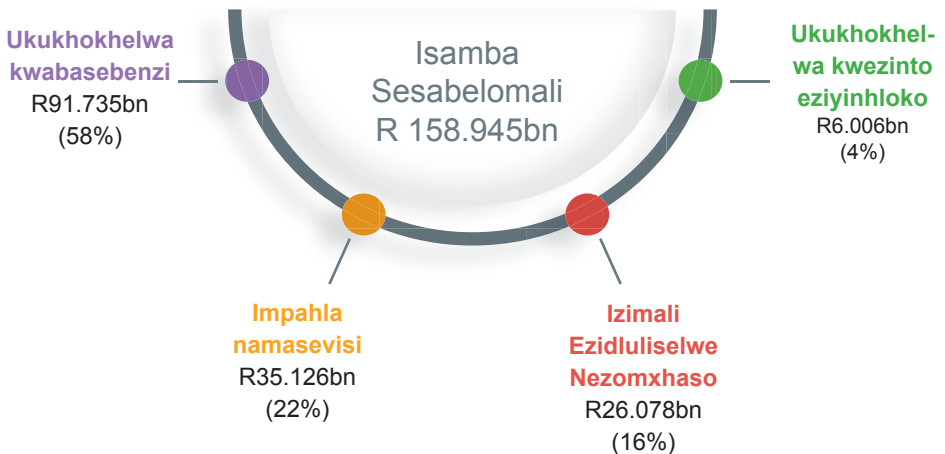


# Ukusetshenziswa Kwemali Yesifunda

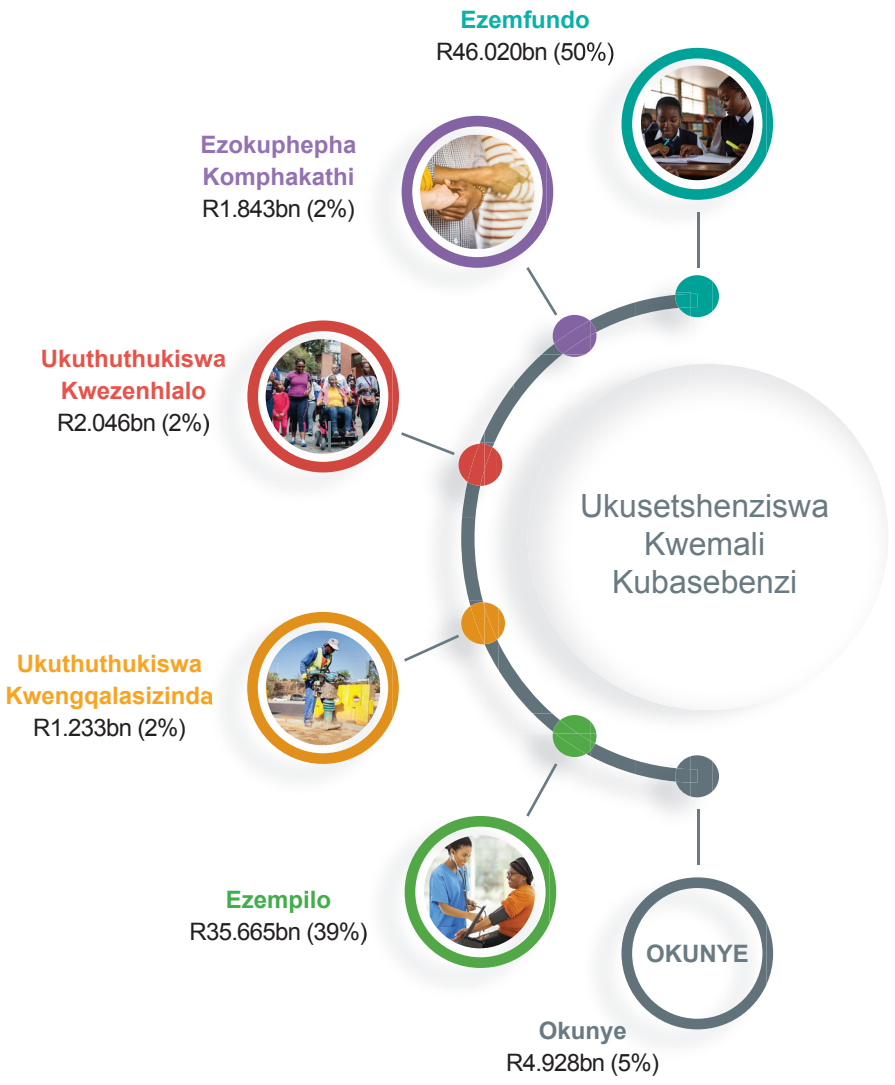


## Umsebenzi

## Isigaba Kwezomnotho



# Ukusetshenziswa Kwemali Kubasebenzi



**Okunye** kuhlukanisa: Ukuthuthukiswa Komnotho; Ukubusa Ngokubambisana Nezindaba Zendabuko; Ezokuhlaliswa Kwabantu; Ezemigwaqo Nezokuthutha; Ezolimo Nokuthuthukiswa Kwezindawo Zasemaphandleni; Ezemidlalo, Ezobuciko, Ezamasiko Nezikaqedisizungu; i-e-Government; Umnyango Womgcinimafa Wesifunda neHhovisi likaNdunankulu

# Ukusetshenziswa Kwemali Kumasevisi Ezenhlalo

## EZEMFUNDO



Ezempundo Yezikole Ezivamile Zomphakathi R44.553bn  
 Ezempundo Yezikole Ezikhethekile Zomphakathi R5.249bn  
 Izinsizakalo Ezihlobene Nokuhlolwa Nezempundo R2.679bn  
 Ukuthuthukiswa Kwengqalasizinda R2.329bn  
 Okunye R8.612bn

## EZEMPILO



Amasevisi Ezibhedlela Eziyinhloko R21.762bn  
 Amasevisi Ezempilo Zesigodi R20.138bn  
 Izinsiza Kwizibhedlela Zesifundazwe R11.357bn  
 Ukuvuselelwa Kwezikhungo Zezempilo R1.918bn  
 Okunye R4.918bn

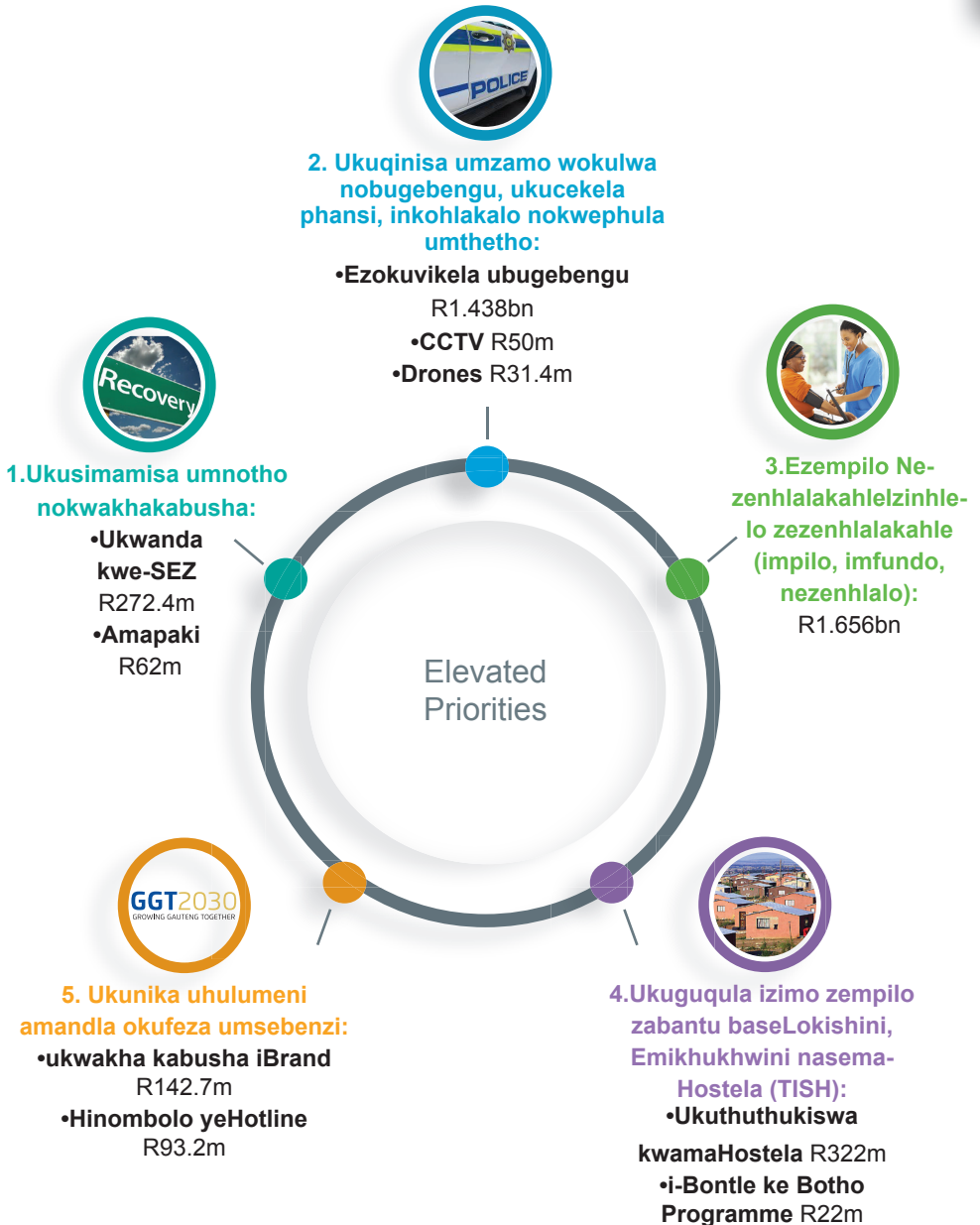
## UKUTHUTHUKISWA KWEZENHLALO



Izingane Nemindeni R1.965bn  
 Amasevisi Ezenhlalakahle R667.1m  
 Ezentuthuko Nocwaningo R1.240bn  
 Amasevisi Okubuyiselwa Kwezinto R959.9m  
 Okunye R718.4m

Isamba Samasevisi Ezenhlalo = R 129.066bn

# Izinto Eziphuthuma Kakhulu





# Kukuphi lapho sinyuse khona Ukusetshenziswa Kwemali?

UMNYANGO	USHINTSHO LOKUSETSHENZISWA KWEMALI 2022/23	UKUSETSH-ENZISWA KWEMALI OKUYINHLOKO 2023/24	% USHINTSHO 2022/23-2023/24
Ezempilo	61 351 417	60 093 535	-2%
Ezemfundo	59 989 655	63 421 638	6%
Ukuthuthukiswa Kwezenhlalo	5 537 037	5 550 806	0%
Imigwaqo Nezokuthutha	8 582 136	8 478 597	-1%
Ezokuhlaliswa Kwabantu	6 607 739	6 421 222	-3%
Ukuthuthukiswa Komphakathi	1 374 065	2 706 192	97%
<b>Okunye</b>	11 905 576	12 273 092	3%
<b>Isamba Sezimali Ezikhokhiwe Esifundeni Nezilinganiso</b>	<b>155 347 625</b>	<b>158 945 081</b>	<b>2%</b>
<b>Ezenhlalo</b>	<b>126 878 109</b>	<b>129 065 979</b>	<b>2%</b>
<b>Okungekhona Okwezenhlalo</b>	<b>28 469 516</b>	<b>29 879 103</b>	<b>5%</b>
<b>Isamba Sokusetshenziswa Kwemali</b>	<b>155 347 625</b>	<b>158 945 081</b>	<b>2%</b>

**Okunye** kuhlanganisa: Ukuthuthukiswa Komnotho; Ukubusa Ngokubambisana Nezindaba Zendabuko; Ezokuphepha Komphakathi; Ezolimo Nokuthuthukiswa Kwezindawo Zasemaphandleni; Ezemidlalo, Ezobuciko, Ezamasiko Nezikaqedisizungu; i-e-Government; Umnyango Womgcinimafa Wesifunda neHhovisi likaNdunankulu

# Ketapele: Ditekanyetšo Gauteng tša 2023/24



**Jacob Mamabolo**

Molekgotlaphethiši: Kgoro ya Ditšhelete

Ekonomi ya Gauteng e ya kaonafala ka morago ga leuba la bolwetši la Covid-19, ebile go nale kabo ya ditšhelete ya 2023 yeo e le gona go thuša ka kgole yeo e hlokagalago. Bjalo ka kokwane ya ekonomi ya Afrika Borwa, Gauteng e na le maikarabelo a go kgonthišetša gore kabo ya ditšhelete yeo e lego gona e dirišwa gabotse go thuša gore ekonomi e tsoge le gore batho ba hwetše ditirelo. Ka ge bjalo noko yeo e beilwego ya gore ba dipolotiki ba buše e fihla mafelelong, go bohlokwa kudu go dira maiteko a gore go be le tšhomišano go netefatša gore dilo tša profense di tla pele gomme di pakane tšeo di beilwego di a fihlelelwa.

E le go itokišeletša taba ya kabo ya ditšhelete, mafapha ka moka a mmušo wa profense ya Gauteng le magoro ka moka a šomišana mmogo go netefatša gore dilo ka moka tšeo ba di tshepišitšego di a direga. Maano ka moka ao a bile go gona a ile a thoma go diriswa, ebile dilo tšeo di tlogo go dirišwa di ile tša hlahlobja le go mpshafatšwa morero e le go laetša boikgafo bjo bo tšwelago pele bja mmušo bja go hlankela batho ba Gauteng. Ka go dira bjalo, profense e tšwela pele ka “Go šoma go Tee go Dira Gore Gauteng e Gole” ka go etiša pele dilo tša bohlokwa mo-setšhabeng go dira gore maemo a ekonomi a gole

- Go akgofiša, go tsošološwa ga ekonomi le go aga lefsa;
- Go lwa le batho bao ba bakago le bosenyi, bomenetša, go hloka molao, le tshenyho. Ba tla ba bjalo ka lenaba leo le tlogo go se bontšhwe kgaugelo;
- Go fetola kudu maemo a bophelo a batho dulago makeišeneng, madulo ao e sego a semmušo, le dihostele tšeo di dirilwego ke profense;
- Go kaonafatša maemo a tša maphelo le go thuša setšhaba gore se phele bophelo bjo bobotse; le

- Go tiiša bokgoni bja mmušo bja go aba ditirelo tša maemo a godimo, le go kaonafatša dikgokagano tša mmušo le bodulo bja Gauteng.

Kabo ya ditšhelete ya 2023/24 e laetša/ bontšhitše boikgafo bjo bo sa šišinyegego bja mmušo bja go etiša pele batho ba Gauteng. Morero o mogolo wa kabo ye ya ditšhelete ke go kaonafatša ditirelo tša setšhaba, go dira mo gontši go maloko ao a lego kotsing mo setšhaba, le go botegela dikeno tšeo di dirilwego morero e le go dira gore batho ba kgone go beeletša ditšhelete tša bona go thuša ekonomi go Gauteng, moo dikgwebo di tlogo go ba tše di bolokegilego, batho ba tla tsenela mediro ya bona ntle le poifo, ba tseba gore Mmušo wa Profense ya Gauteng le bašomi mmogo le bona ba tla šoma mmogo go hlola tikologo e botse ya go thabiša.

Motho yo mongwe le yo mongwe o kgomilwe ke bosenyi e ka ba ka go lebanya goba ka go se lebanye. Kabo ya ditšhelete yeo e lego gona e tlo dirišwa go thuša mmušo wa profense ya Gauteng ka go akgofa go ba le methopo le didirišwa tšeo di hlokagalago go arabela ka moo go swanetšego. Re a le kgodiša gore mmušo wo o tla šoma ka matla, go dira gore Gauteng e be kgetho ya mathomo ya go phela go yona, go beeletša le go dira kgwebo.



---

Jacob Mamabolo  
Molekgotlaphethiši: Kgoro ya Ditšhelete

# Dilo tša bohlokwa

**1**

Go akgofiša, go tsošološwa ga ekonomi le go aga lefsa

**2**

Go lwa le batho bao ba bakago le bosenyi, bomenetša, go hloka molao, le tshenyo. Ba tla ba bjalo ka lenaba leo le tlogo go se bontšhwe kgaugelo

**3**

Go fetola kudu maemo a bophelo a batho dulago makeišeneng, madulo ao e sego a semmušo, le dihostele tšeo di dirilwego ke profense

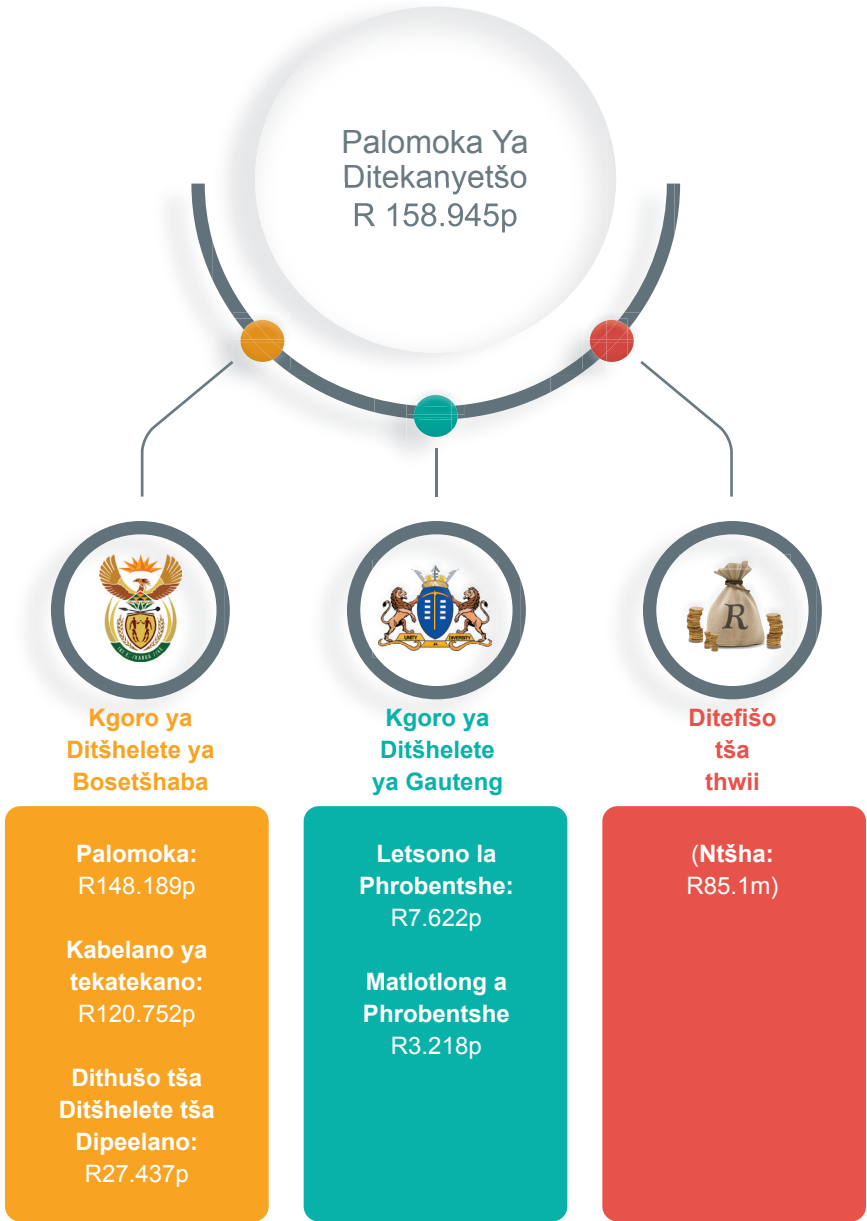
**4**

Go kaonafatša maemo a tša maphelo le go thuša setšhaba gore se phele bophelo bjo bobotse

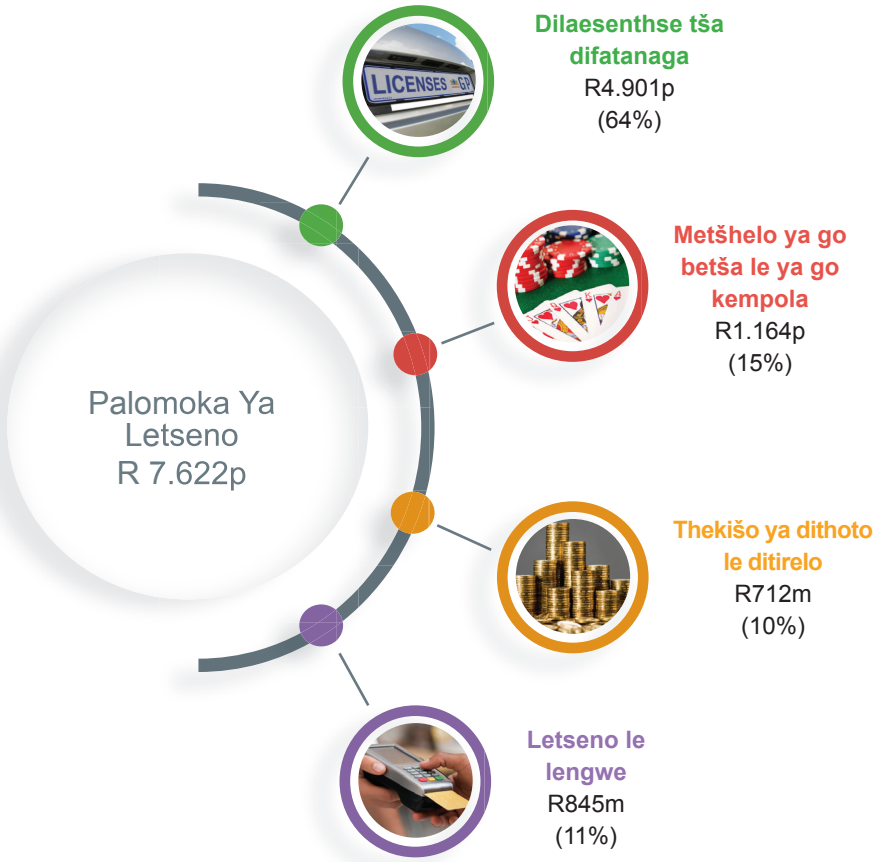
**5**

Go tiiša bokgoni bja mmušo bja go aba ditirelo tša maemo a godimo, le go kaonafatša dikgokagano tša mmušo le bodulo bja Gauteng

# Methopo ya Ditekanyetšo tša Rena



# Letseno la Rena

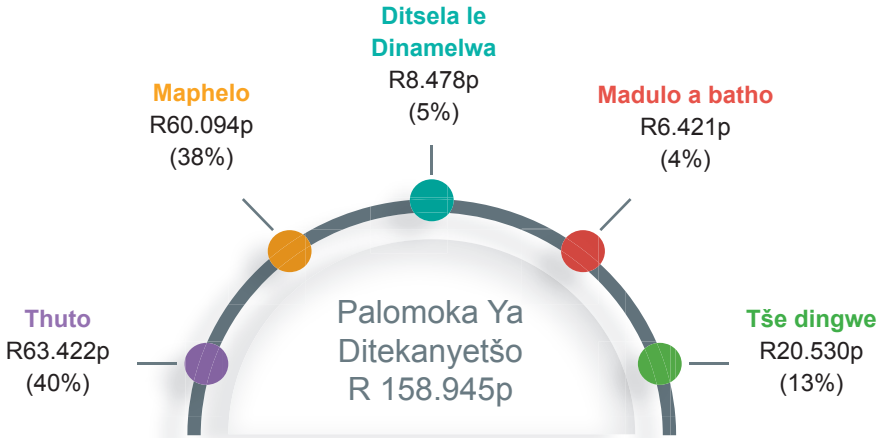


**Letseno le lengwe** le bopilwe ke difaene, dikotlo le dikgafelo; tswala; le ditheranseke tša ditšhelete tša dithoto le dikoloto.

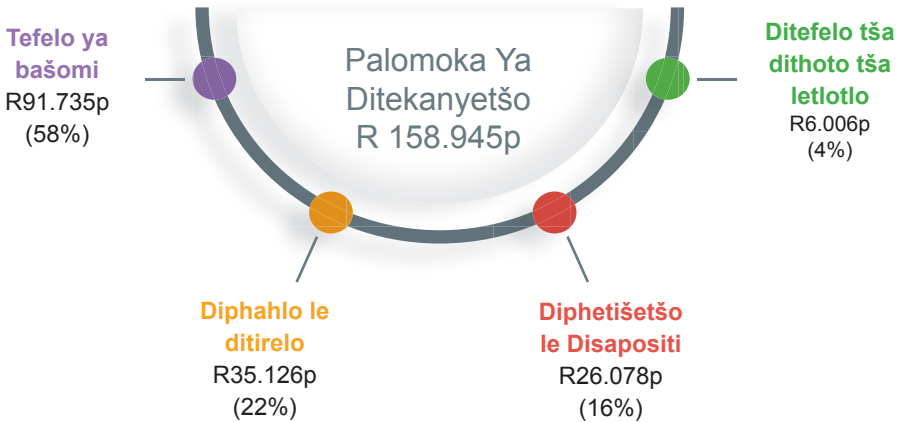
# Dithušo tša Ditšhelete tša Dipeelano



# Tšhomišo ya Ditšhelete tša phrobentshe

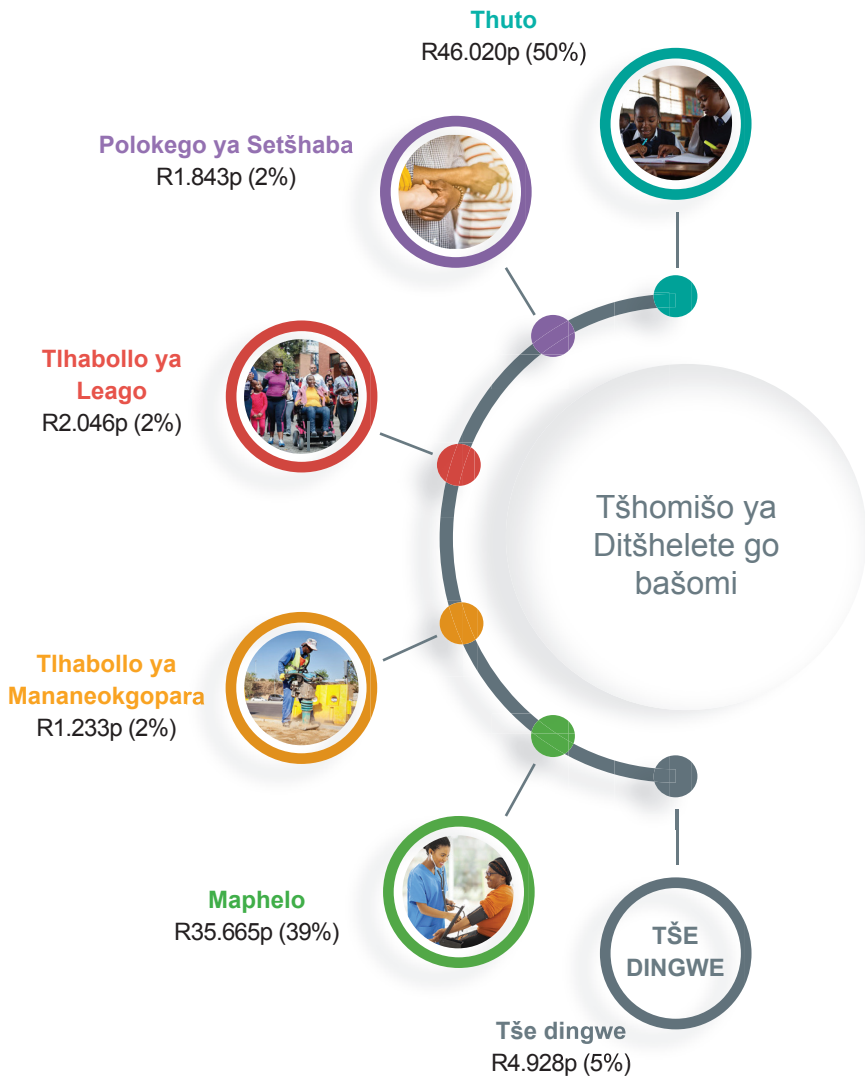


## Karoganyo Ya Ekonomi





# Tšhomišo ya Ditšhelete go bašomi



**Tše dingwe** di akaretša: Tlhabollo ya Ekonomi; Pušo ya Tirišano le Merero ya Setšo; Madulo a Batho; Ditsela le Dinamelwa; Temo le Tlhabollo ya Dinagamagae; Dipapadi, Bokgabo, Setšo le boitapološo; Pušo ya elektroniki; Kgoro ya Ditšhelete ya Phrobentshe le Kantoru ya Tonakgolo

# Tšhomišo ya ditšhelete go Ditirelo tša Setšhaba

## THUTO



Thuto ya Dikolo tša Setšhaba tša Tiwaelo R44.553p  
 Thuto ya Dikolo tša Setšhaba tše di Kgethegilego R5.249p  
 Ditirelo tša go amana le Ditlahlobo le thuto R2.679p  
 Tlhabollo ya Bana ba Mengwaga ya ka Fasana R2.329p  
 Ye nngwe R8.612p

## MAPHELO



Ditirelo tša Sepetlele tša Bogareng R21.762p  
 Ditirelo tša Maphelo tša Selete R20.138p  
 Ditirelo tša Dipetlele tša Phrobentshe R11.357p  
 Pušetšosekeng ya didirišwa tša maphelo R1.918p  
 Ye nngwe R4.918p

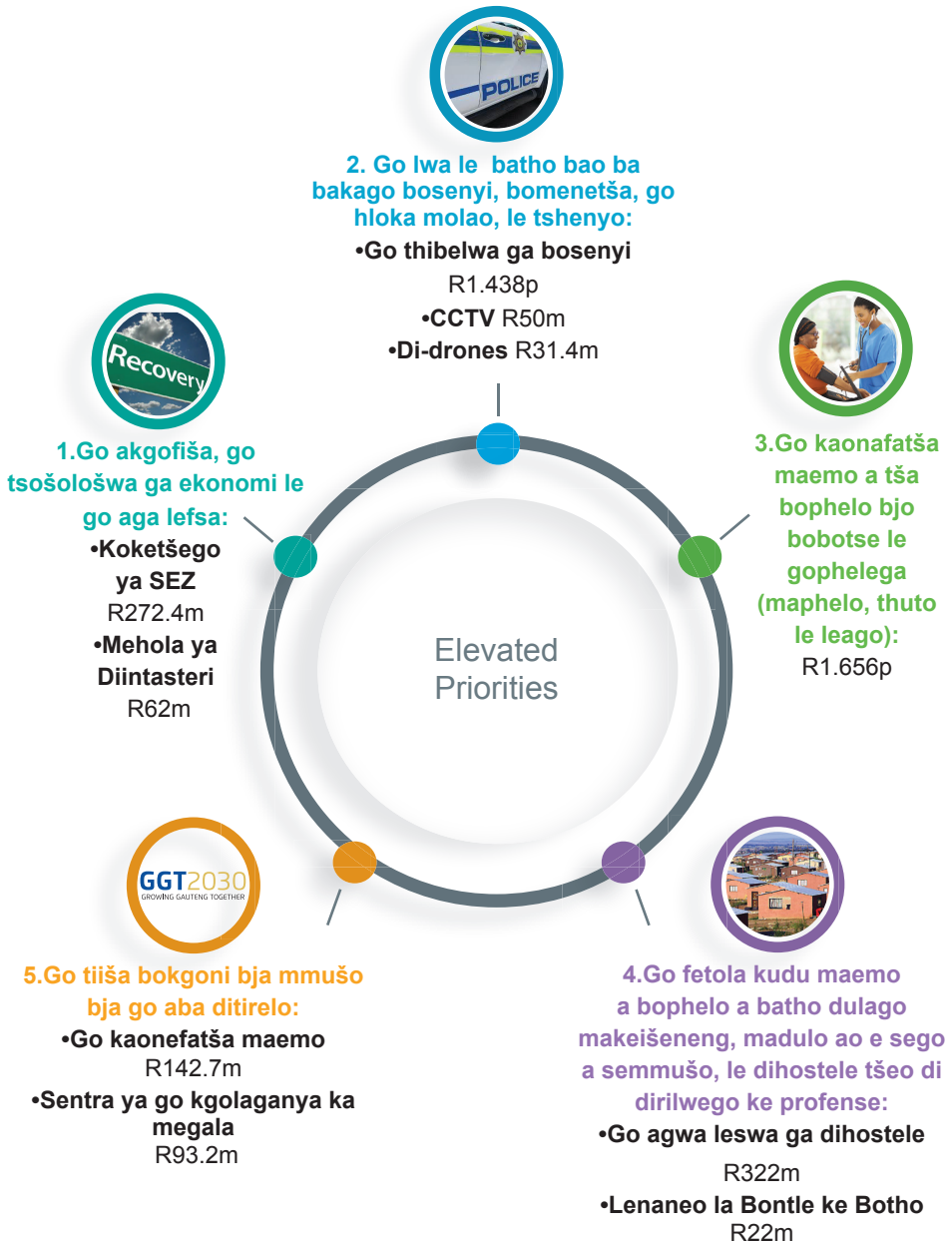
## TLHABOLLO YA LEAGO



Bana le Malapa R1.965p  
 Ditirelo tša Bobotlana R667.1m  
 Dinyakišišo le Tlhabollo R1.240p  
 Ditirelol tša Pušetšosekeng R959.9m  
 Ye nngwe R718.4m

Palomoka Ya Ditirelo Tša Setšhaba = R 129.066p

# Dilo tša bohlokwa



# Naa ke kae fao re okeditšego tšhomišo ya rena ya ditšhelete?

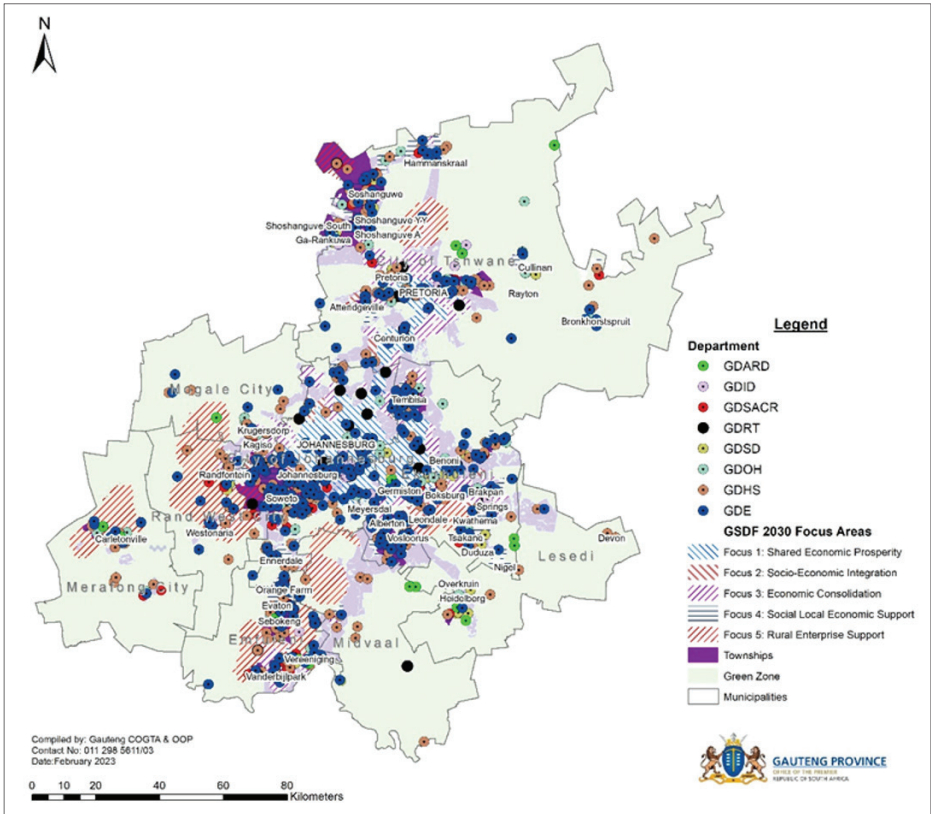
KGORO	DITEKANYETŠO TŠE DI BEAKANTŠWEGO LESWA 2022/23	DITEKANYETŠO-KGOLO 2023/24	% YA PHETOGO 2022/23-2023/24
Mapheho	61 351 417	60 093 535	-2%
Thuto	59 989 655	63 421 638	6%
Tlhabollo ya Leago	5 537 037	5 550 806	0%
Ditsela le Dinamelwa	8 582 136	8 478 597	-1%
Madulo a Batho	6 607 739	6 421 222	-3%
Polokego Ya Setšhaba	1 374 065	2 706 192	97%
<b>Ye nngwe</b>	11 905 576	12 273 092	3%
<b>Palomoka ya Ditefelo le dikakanyetšo tša ka phrobentsheng</b>	<b>155 347 625</b>	<b>158 945 081</b>	<b>2%</b>
<b>Leago</b>	<b>126 878 109</b>	<b>129 065 979</b>	<b>2%</b>
<b>Tše e sego tša Leago</b>	<b>28 469 516</b>	<b>29 879 103</b>	<b>5%</b>
<b>Palomoka ya Ditekanyetšo</b>	<b>155 347 625</b>	<b>158 945 081</b>	<b>2%</b>

**Ye nngwe** e akaretša: Tlhabolo ya Ekonomi; Pušo ya Tirišano le Merero ya Setšo; Polokego ya Setšhaba; Temo le Tlhabollo ya Dinagamagae; Dipapadi, Bokgabo, Setšo le Boitapološo; pušo ya elektroniki; Kgoro ya Ditšhelete ya Phrobentshe le Kantororo ya Tonakgolo

# Spatial Referencing of the Budget

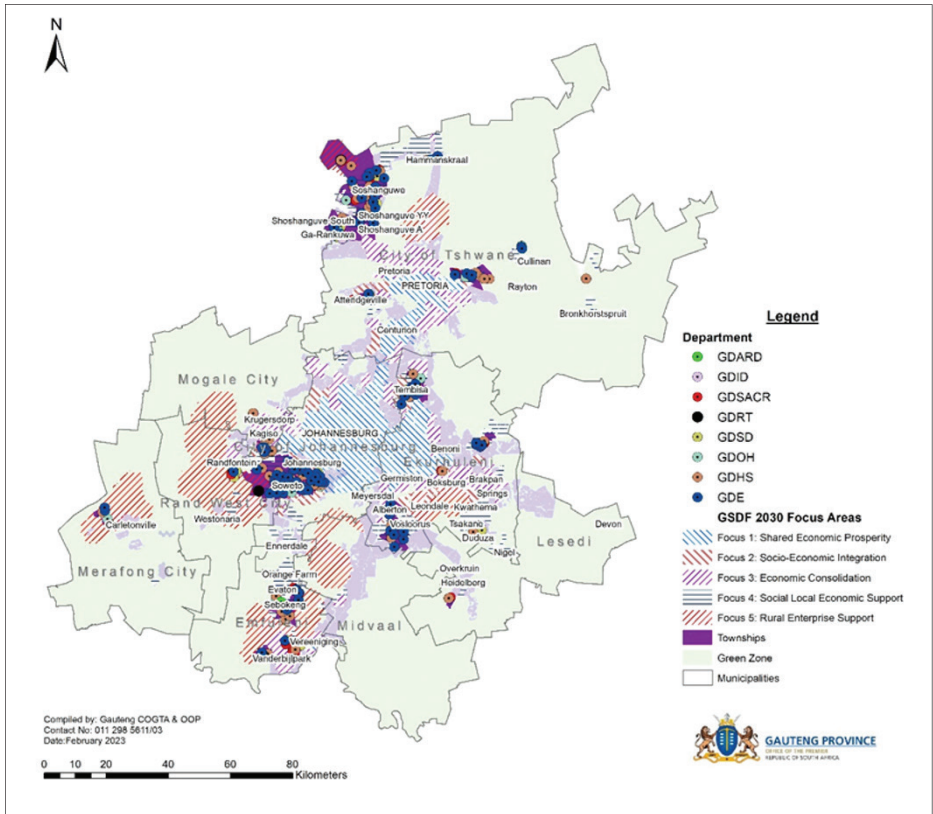
## Spatial referencing of the budget

Figure: Overall infrastructure Investment in relation to GSDF2030 Focus Areas 1 to 5

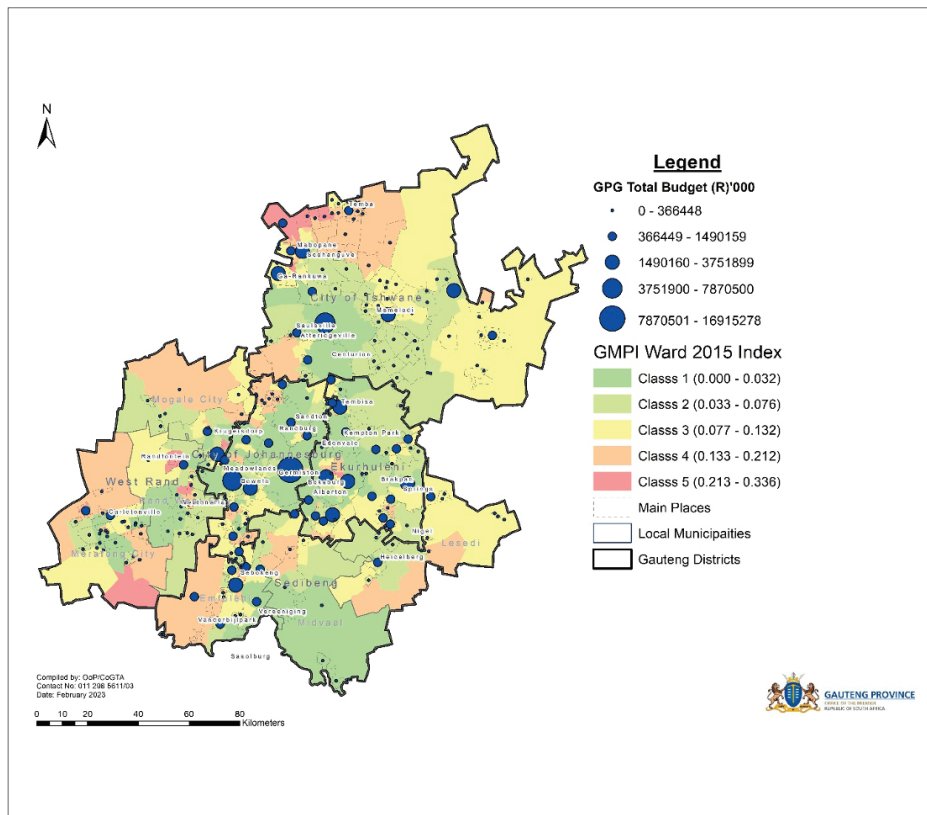


Prevailing infrastructure budgets cut across the various GSDF2030 focus areas, but there is notable level of concentration in nodal agglomerations of various scales. The level of concentration in specific areas becomes notably more pronounced when infrastructure budget is isolated in areas that may be linked to Townships, Informal Settlements and Hostels (TISH) as illustrated in the map below.

Figure: Infrastructure investment in TISH Areas



## Consolidated non-infrastructure performance against MPI (Multi-Dimensional Poverty Index)



## Spatial Referencing of the Budget





# Access to Information

**Please call us if you have any information on fraud and corruption in the Gauteng Provincial Government.**

**Fraud and Corruption toll free Number**

0800 701 701

**Visit our website at:**

[www.gauteng.gov.za](http://www.gauteng.gov.za)

**Comments on the budget are welcome and can be forwarded to:**

Head of Department

Gauteng Provincial Treasury

Private Bag X12

Marshalltown

2107

**Telephone no: (+27) 11 227 9000**

# R

## Contact Information:

Physical Address:  
75 Fox Street, Imbumba House  
Johannesburg  
2107

Postal Address:  
Private Bag X12,  
Marshalltown,  
Johannesburg,  
2107

Switchboard:  
011 227 9000

Email address:  
GPTCommunications@gauteng.gov.za

Website Address:  
www.gauteng.gov.za

PC Image:  
Author Unknown, [ONLINE]. <https://wallpaperaccess.com/france>

PR14/2023  
ISBN: 978-0-621-50868-0



**GAUTENG**  
PROVINCIAL GOVERNMENT  
REPUBLIC OF SOUTH AFRICA

**GGT2030**  
GROWING GAUTENG TOGETHER